

Florida Gateway College

2023 *Fact Book*



FLORIDA GATEWAY
COLLEGE

Go Further
Together at FGC

TABLE OF CONTENTS

Table of Contents	1
Quick Facts.....	4
Overview.....	5
History	5
Updates – 2023.....	5
Accreditation	6
Mission.....	6
Executive Council.....	6
Board of Trustees	6
Florida Gateway College Organizational Charts	7
President’s Aspirational Goals 2017-2023.....	10
Section 1. Student Headcounts and Demographics	11
Table 1.1 Fall Headcount – 5-Year Trend (2019 – 2023).....	11
Table 1.2. Fall 2023 Headcount by Status and Gender.....	11
Table 1.3 Fall 2023 Headcount by Status and Age Range.....	11
Table 1.4 Fall 2023 Headcount by Status and Race/Ethnicity	11
Table 1.5 Fall 2023 Enrollment by County of Residence	12
Table 1.6 Fall 2023 Enrollment by Student Type	12
Table 1.7 Full-Time / Part-Time Headcount by Term - 5 Year Trend	12
Table 1.8 Fall Headcount by Race/Ethnicity - 5 Year Trend.....	13
Section 2. Entering Class & Unduplicated Headcount	13
Table 2.1 Fall 2023 Entering Class Characteristics.....	13
Table 2.2 Unduplicated Headcount - 5 Year Trend.....	14
Section 3. Full-Time Equivalent (FTE) Enrollment.....	14
Table 3.1 2022-2023 FTE by Term by Program Area	14
Table 3.2 FTE – 5-Year Trend	14
Table 3.3 FTE – 5-Year Trend by Program Area	15
Section 4. Instruction.....	16
Table 4.1 Fall 2023 Average Class Size by Discipline.....	16
Table 4.2 Class Size – 5-Year Trend.....	16
Table 4.3 Fall 2023 College Credit Course Enrollment by Method of Delivery.....	16
Table 4.4 2022-2023 College Credit Course Success by Instructional Method	17

Table 4.5 Fall Course Total Enrollment Percent by Method of Delivery 5-Year Trend	17
Section 5. Programs	18
I. Associate in Arts	20
II. Associate in Science / Associate in Applied Science	22
III. Postsecondary Vocational (College Credit) Certificates	24
IV. Postsecondary Adult Vocational Certificates	26
V. Baccalaureate Degree Programs	28
VI. Educator Preparation Institute (EPI) Certificate Program	29
Section 6. IPEDS Retention, Graduation & Transfer-Out Rates	30
Table 6.1 Fall-to-Fall Overall Retention Rates	30
Table 6.2 Graduation & Transfer Rates	30
Table 6.3 Graduation & Transfer Rates	31
Section 7. Faculty and Staff	31
Table 7.1 Faculty Full-time & Part-time	31
Table 7.2 Gender	32
Table 7.3 Race/Ethnicity	32
Table 7.4 Gender by Occupational Activity	33
Table 7.5 Employee Headcount by Race/Ethnicity	33
Table 7.6 Employee Headcount by Gender/Status	34
Section 8. Campus Facilities	34
8.1 Florida Gateway College Site Inventory - 2020	34
8.2 Main Campus Map	35
8.3 Off-Campus Sites	36
8.4 Campus Facilities Available for Lease	37
Section 9. Wilson S. Rivers Library and Media Center	38
2022-23 FGC Library Statistics	38
Section 10. Athletics	39
Table 10.1 Sports Teams and Participation (2022-2023)	39
Table 10.2 Athletically Related Student Aid - All Teams	39
Section 11. Financial Aid	40
Table 11.1 Annual Financial Aid Awarded Aid Counts 2022-2023	40
Table 11.2. Aid Awards by Award Type 2022-2023	41
Table 11.3 Annual Financial Aid Awarded – 5-Year Trend	41
Section 12. Student Fees 2022-2023	42
Section 13. Foundation for Florida Gateway College, Inc.	43

Section 14. Audited Financials	44
Section 15. Florida Gateway College Service Area	45
Image 15.1 FGC 5-County District.....	45
Table 15.2 Population Estimates and Land Area of FGC Service Area - 2022.....	46
Table 15.3 Selected Population Age and Gender Demographics - 2022	46
Table 15.4 Population by Race/Ethnicity - 2022.....	46
Table 15.5 Education Attainment Levels of Population 25 Years and Older - 2022	46
Glossary of Terms	47



QUICK FACTS

HEADCOUNT – FALL 2023

Full-Time	1,040	(36%)
Part-Time	1,856	(64%)
Total	2,896	

Refer to Table 1.1

2022-2023 UNDUPLICATED HEADCOUNT

4,350¹

Refer to Table 2.2

PERCENT ENTERING CLASS FULL-TIME FIRST TIME IN COLLEGE – FALL 2023

42%

Refer to Table 2.1

2022-2023 FTE

2,062

Refer to Table 3.2

FALL-TO-FALL RETENTION RATE² – 2022-23 → 2023-24

Full-time – 70% Part-time – 58% Overall – 65%

Refer to Table 6.1

GRADUATION RATE – 2022 (IPEDS 2016 COHORT)

64%

Refer to Table 6.2

2022-2023 GRADUATES

936

FCS AA1A 22-23 Report p.18

TUITION AND FEES – FLORIDA RESIDENT

Credit Courses, Lower Division: Total per credit hour.....	\$103.32
Postsecondary Adult Vocational Total per semester hour equivalent.....	\$84.89
Credit Courses, Upper Division, Baccalaureate: Total per credit hour.....	\$120.33

Details on Page 37

¹ Estimated from FGC APEX Enrollment reports 7/11/23

² As calculated by the Florida College System PERA division using “old” IPEDS methodology

OVERVIEW

HISTORY

Florida Gateway College traces its growth from 1947 when the Columbia Forestry School opened on a former World War II naval air station. In 1949, it became the State Forest Ranger School of the University of Florida and remained so for more than a decade. In 1961, the state of Florida created Lake City Junior College and Forest Ranger School, and the College became one of 28 two-year institutions envisioned in the state's master plan. In those early days, Lake City Junior College served fewer than 400 students. The college then became Lake City Community College in 1970, emphasizing the importance to support the region the college serves. The next evolution of the college occurred in 2010, when the College became eligible to offer baccalaureate degrees and was renamed Florida Gateway College.

Now a public college serving approximately 4,500 students annually, the College's district encompasses five North Central Florida counties: Baker, Columbia, Dixie, Gilchrist, and Union. This nearly 2,700 square mile district is twice the size of the state of Rhode Island. The College district is situated midway between the Atlantic Ocean and the Gulf of Mexico, and is predominantly rural. The region around the College is commonly referred to as "Florida's Crown" or the "Gateway to Florida."

Florida Gateway College offers baccalaureate and associate degrees, as well as opportunities in diverse occupational programs designed to strengthen the district's workforce. The College maintains its commitment to providing excellent postsecondary educational opportunities to North Central Florida while maintaining an "open-door" admission policy. New programs are added as needed to meet local industry and employer needs, and student support services are continually improved to meet the needs of the College's students.

UPDATES – 2023

Florida Gateway College completed the assessment of its 2017-2022 Strategic Plan. Work on the development of the next Strategic Plan has begun. The rapidly changing education environment in Florida and the nation will be the guide for our college's future. Flexible strategies necessary to maintain our ability to remain a top-tier institution in our region will weigh heavily in decisions for the future as we engage the campus and our community in forging a path for the next five years.

In concert with the development of the 2023-2028 Strategic Plan, the college will be ramping up the activities associated with our Fifth-Year Report to our accreditor, the Southern Association of Colleges and Schools Commission on Colleges (SACSCOC).

The college concluded its 75th Anniversary celebration with a glamorous Gala in May 2023. We look forward to the years and decades ahead as we strive to continue meeting the challenges and needs of our students and community.

ACCREDITATION

Florida Gateway College is accredited by the Southern Association of Colleges and Schools Commission on Colleges (SACSCOC) to award baccalaureate and associate degrees. Questions about the accreditation of Florida Gateway College may be directed in writing to the Southern Association of Colleges and Schools Commission on Colleges at 1866 Southern Lane, Decatur, Georgia 30033-4097, by calling (404) 679-4500, or by using information available on SACSCOC's website (www.sacscoc.org).

MISSION

The mission of Florida Gateway College is to provide superior instruction, nurture individual development, and enrich the diverse communities it serves through affordable, quality higher education programs and lifelong learning opportunities.

Reaffirmed by the Board of Trustees on June 16, 2022.

EXECUTIVE COUNCIL

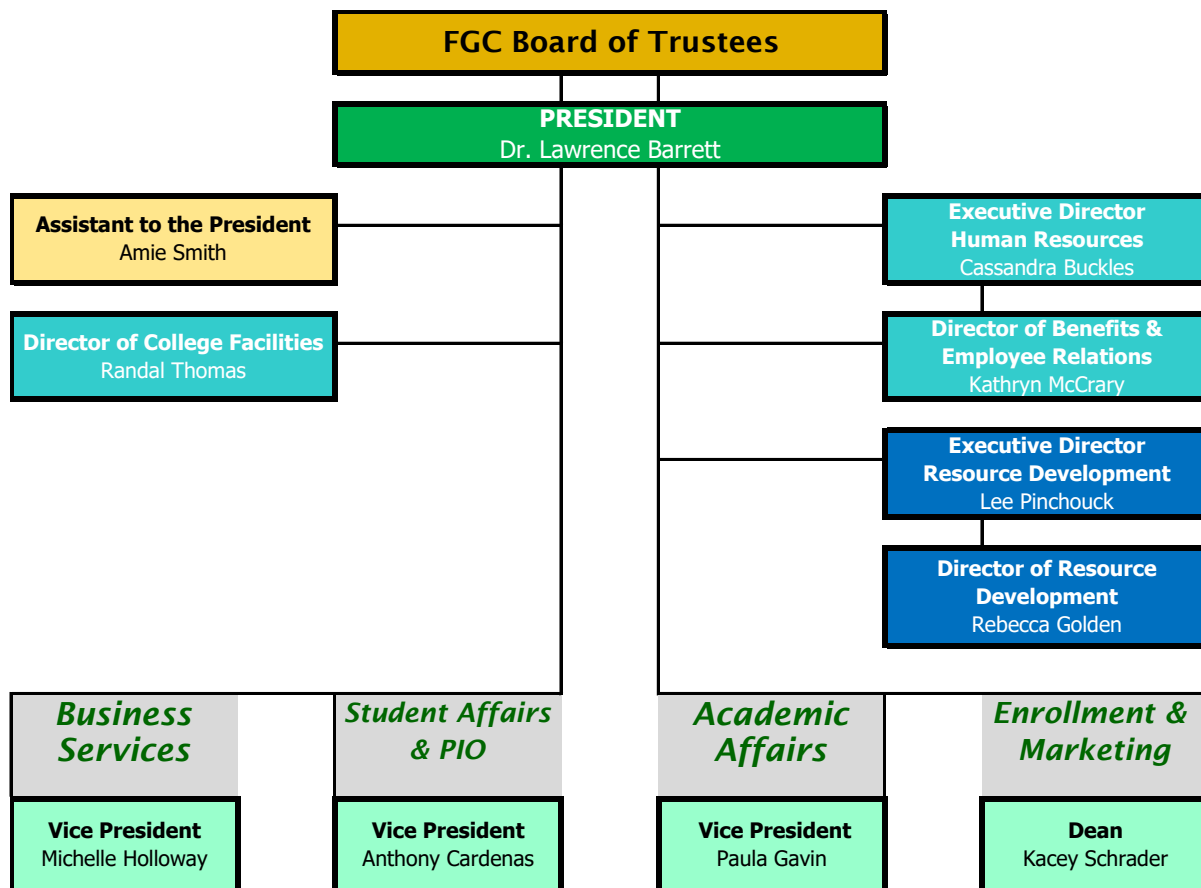
❖ PRESIDENT	Dr. Lawrence Barrett
❖ VICE PRESIDENT FOR BUSINESS SERVICES	Ms. L. Michelle Holloway
❖ VICE PRESIDENT OF ACADEMIC AFFAIRS	Dr. Paula L. Gavin
❖ VICE PRESIDENT OF STUDENT AFFAIRS & PUBLIC INFORMATION	Mr. Anthony Cardenas
❖ DEAN OF ENROLLMENT & MARKETING	Ms. Kacey Schrader
❖ EXECUTIVE DIRECTOR OF HUMAN RESOURCES	Ms. Cassandra Buckles
❖ EXECUTIVE DIRECTOR OF RESOURCE DEVELOPMENT	Mr. Lee Pinchouck

BOARD OF TRUSTEES

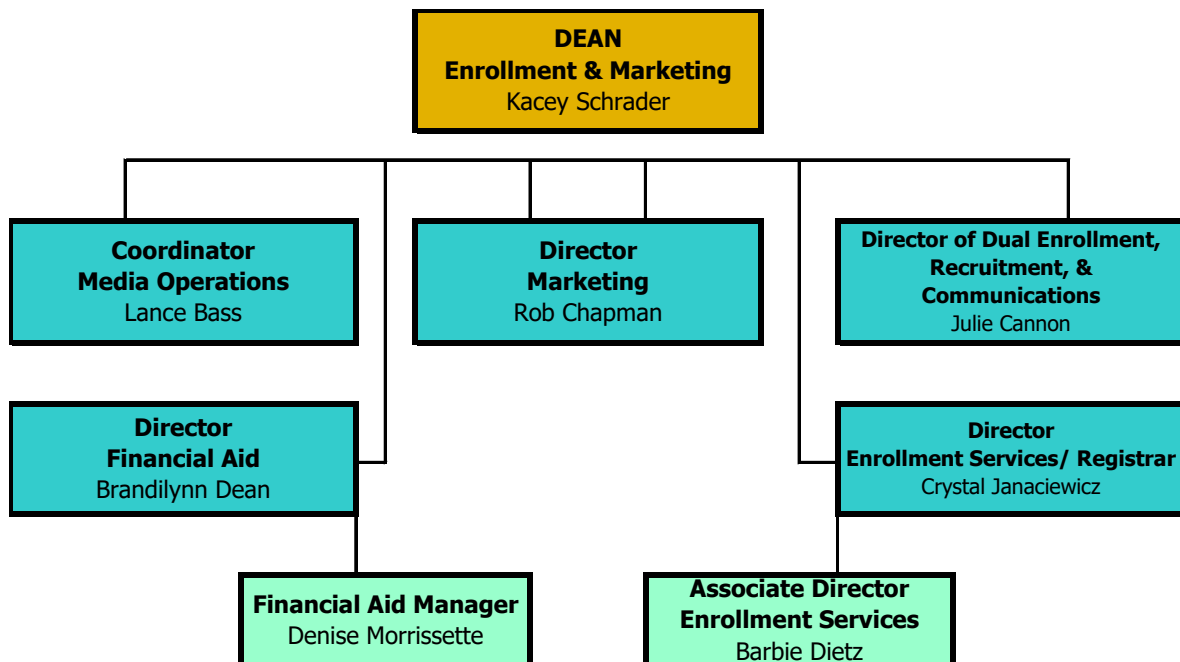
TRUSTEE	COUNTY	BOARD MEMBER SINCE
Mr. J. David Crawford, <i>Chair</i>	Baker	February 1, 2018
Ms. Renae Allen, <i>Vice-Chair</i>	Union	July 21, 2014
Mr. Robert C. Brannan III	Baker	July 1, 2003
Mr. Lindsey Lander	Gilchrist	September 1, 2013
Ms. Kathryn L. McInnis	Dixie	March 1, 1999
Mr. John Medina	Columbia	July 1, 2023
Ms. Suzanne M. Norris	Columbia	March 1, 1999
Dr. James Surrency	Gilchrist	April 20, 2018
Dr. Miguel Tepedino	Columbia	September 1, 2013



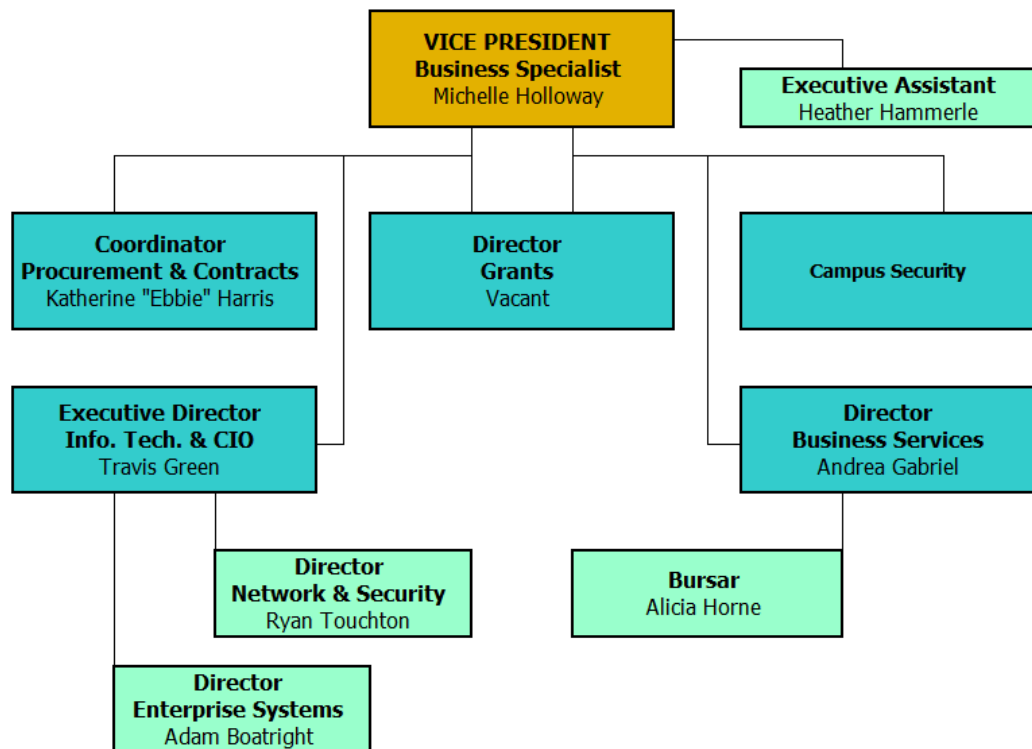
FLORIDA GATEWAY COLLEGE ORGANIZATIONAL CHARTS



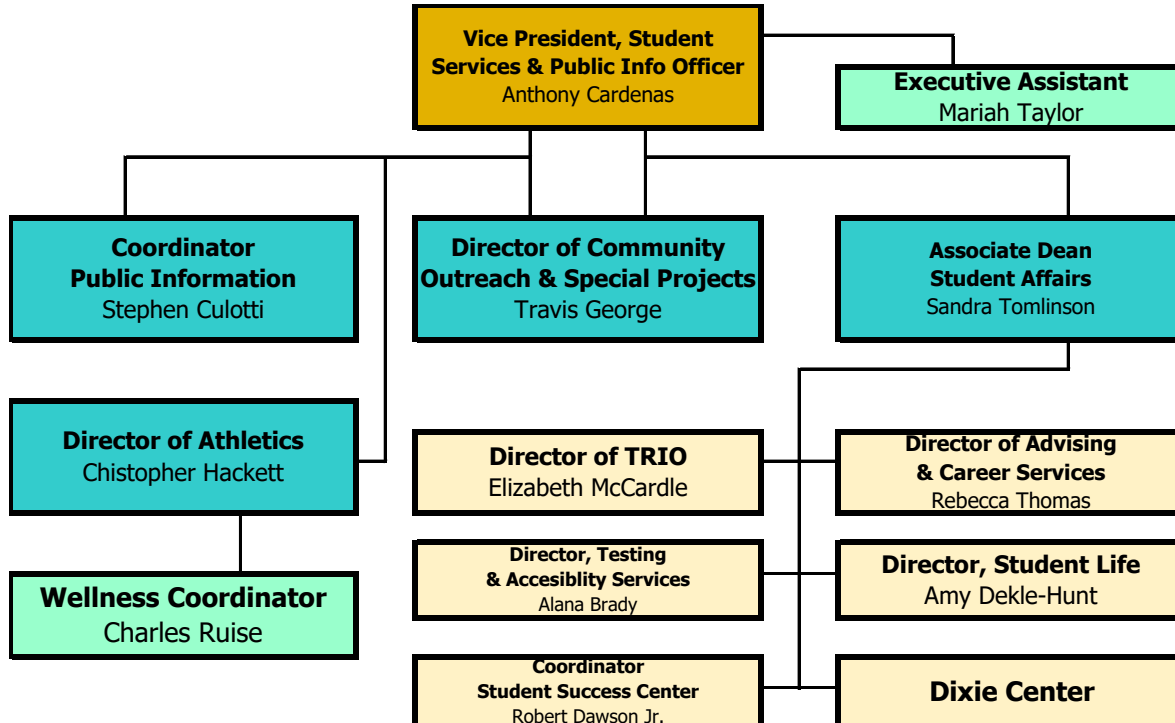
Enrollment Services & Marketing



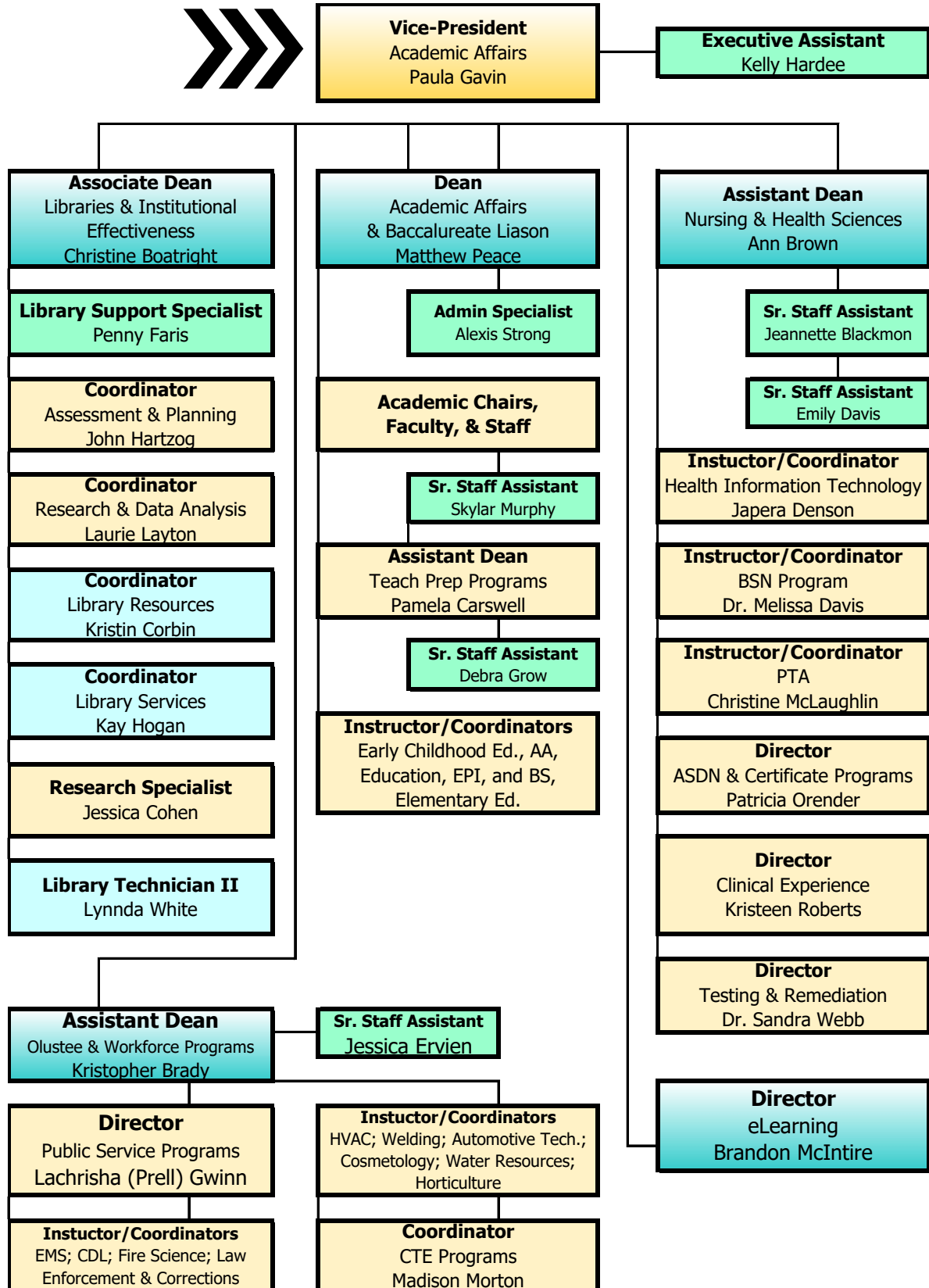
Business Services



Student Services/Public Information



Academic Affairs



PRESIDENT'S ASPIRATIONAL GOALS 2017-2023

Executive Summary

Florida Gateway College had 10 aspirational goals that were tracked concurrently with the 2017-2023 Strategic Plan goals. These aspirational goals are summarized with their final result below.

- **Aspirational Goal 1** - *Increase retention rate for first-time full-time students to 69%.* The baseline was 65% and the final result was 67%. While some progress was made in this area COVID-19 presented a problem for many of our enrollment based aspirational goals.
- **Aspirational Goal 2** - *Increase overall fall-to-fall retention rates to 60%.* The original baseline was at 56% but due to IPEDS error the actual baseline was 60% which is also the final result for fall-to-fall retention rate, thus the goal has been met.
- **Aspirational Goal 3** – *Increase graduation rate to 65%.* The baseline was 41% and the final result is 64% falling just shy of the original goal yet still a milestone achievement for Florida Gateway College.
- **Aspirational Goal 4** – *Increase unduplicated headcount enrollment to 5,800 per year.* The baseline was 4,594. The final headcount was 4,168. The headcount was increasing on-target to meet or be close to the goal but enrollment suffered due to the COVID-19 Pandemic.
- **Aspirational Goal 5** – *Increase FTE enrollment to 2,500 annualized.* Baseline was 2,178 with the final result being 1,993. FTE saw a decrease due to COVID-19 Pandemic.
- **Aspirational Goal 6** - *Increase the number of full-time faculty by 15%.* The baseline was 65 full-time faculty, the final result was 74, a single faculty position shy of achieving the goal.
- **Aspirational Goal 7** - *Increase assets of the Foundation for Florida Gateway College to over 22 million dollars.* The baseline was 14.8 million dollars with the final result being 23 million dollars surpassing the target goal of 22 million.
- **Aspiration Goal 8** – *Expand the number of Bachelor Degree Programs offered to 5.* Baseline was 3 programs and final progress was 4 bachelor degree programs. Plans for the B.S. in Business Administration was placed on hold due to various factors falling short by 1 degree program.
- **Aspirational Goal 9** - *Expand the number of academic programs offered entirely through distance learning to thirteen.* The baseline was 7 with the original goal to be 8 but was revised to 13 once target was achieved. Final progress is 12 programs are now available in their entirety via distance learning.
- **Aspirational Goal 10** - *Florida Gateway College will be nationally recognized as a premier learning institute that nurtures a high level of student success and instructional quality. (IE– Aspen Institute, Chronicle of Higher Education).* FGC was selected as a Top 150 College and invited to apply to the Aspen Prize for 2023. Although FGC did not make the list of top-finalists, our performance metrics rated as high as or higher than several colleges who did make the final round. There is a solid chance that we will make the Top 150 in the next awards competition.

Overall, Florida Gateway College demonstrated significant progress towards achieving its strategic and aspirational goals, with notable achievements in all areas. FGC's commitment to continuous improvement resulted in the reaffirmation of accreditation by SACSCOC in 2020 and Florida Gateway College being named one of the Top 150 U.S. Community Colleges in 2021 and 2023, recognizing its high achievement and efforts in providing superior instruction.



SECTION 1. STUDENT HEADCOUNTS AND DEMOGRAPHICS

Source (Tables 1.1-1.4): State Report [Student Database] FCS 2023-2024, Postsecondary Headcount "Postsecondary Headcount Enrollment" pg. 1-3

TABLE 1.1 FALL HEADCOUNT – 5-YEAR TREND (2019 – 2023)

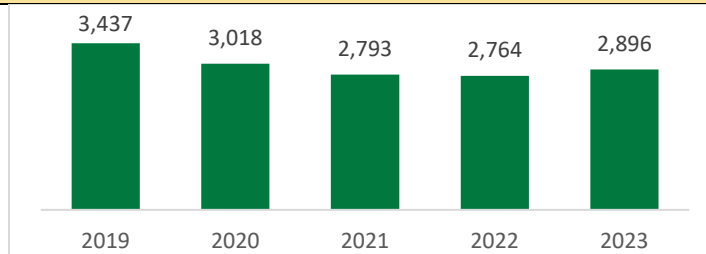


TABLE 1.2. FALL 2023 HEADCOUNT BY STATUS AND GENDER

Status	Male	Female	Total
Full-Time	377	663	1,040
Part-Time	600	1,256	1,856
Total	977	1,919	2,896

TABLE 1.3 FALL 2023 HEADCOUNT BY STATUS AND AGE RANGE

Status	Under 18	18-24	25-34	35-64	65+	Total	Average Age
Full-Time	97	659	161	123	0	1,040	23.8
Part-Time	419	719	411	301	6	1,856	25.6
Total	516	1,378	572	424	6	2,896	24.9

TABLE 1.4 FALL 2023 HEADCOUNT BY STATUS AND RACE/ETHNICITY

Status	White	Black	Hispanic ³	Asian	Other ⁴	2 or More	Total	% Minority ⁵
Full-Time	720	174	96	15	7	28	1,040	30.8%
Part-Time	1,343	280	144	27	16	46	1,856	27.6%
Total	2,063	454	240	42	23	74	2,896	28.8%

³ Hispanic may be of any race. Students identifying Ethnicity as Hispanic are not included in individual Race counts.

⁴ **Other** category includes American Indian, Pacific Islander/Hawaiian, Nonresident Alien, and Unknown categories.

⁵ Minority percentage includes all non-white population categories.

TABLE 1.5 FALL 2023 ENROLLMENT BY COUNTY OF RESIDENCE

FGC District Counties:	67.0%	Selected Neighboring Counties:	17.3%
<i>Baker</i>	12.4%	<i>Suwannee</i>	8.9%
<i>Columbia</i>	40.6%	<i>Alachua</i>	4.9%
<i>Dixie</i>	3.6%	<i>Hamilton</i>	1.2%
<i>Gilchrist</i>	4.2%	<i>Bradford</i>	1.5%
<i>Union</i>	6.2%	<i>Levy</i>	0.9%
All Other Florida Counties	12.3%	Out-of-State/Unknown	3.2%

Source: Banner Extract 10/5/2023; APEX Students Report

TABLE 1.6 FALL 2023 ENROLLMENT BY STUDENT TYPE

Source: APEX Enrollment w/offset Report, extracted 10/5/23

Student Type	Percent of Total Enrollment
Regular Student Type	81.0%
Baccalaureate (includes "Intended" students)	1.8%
Continuing-Readmit	55.0%
Educator Prep-Teacher Cert	0.3%
New First Time In College	17.5%
Transfer	6.0%
Transient	0.4%
Collegiate HS /Early College Student⁶ Type	6.0%
Continuing-Readmit	4.8%
Early College FTIC	0.5%
Early College Continuing-Readmit	0.7%
Dual Enrollment Student Type	11.4%
DE-First Time in College	4.3%
Continuing-Readmit	7.1%
Continuing Education Non-Credit	1.3%
Adult Education GED Non-Credit	0.3%
Grand Total	100.0%

TABLE 1.7 FULL-TIME / PART-TIME HEADCOUNT BY TERM - 5 YEAR TREND

Source (Tables 1.7 & 1.8): State Report [Student Database] **ETENSRPT** (varies by term) "Postsecondary Headcount Enrollment", pg. 1
 Note: Fall data is Beginning of Term ("Census"); Summer and Spring is End of Term. Year per our IPEDS submission year: Summer-Fall-Spring.

*College shut down for in-person classes in March 2020 due to Covid-19 pandemic.

	Summer	Fall		Spring	
Year	Part-time	Full-time	Part-time	Full-time	Part-time
2018-19	1,867	1,218	2,172	1,015	2,278
*2019-20	1,915	1,144	2,293	961	2,336
2020-21	1,905	1,019	2,000	901	2,033
2021-22	1,752	934	1,889	756	1,911
2022-23	1,858	960	1,804	846	1,899

⁶ Early College was formerly called Collegiate High School. FGC Did not change the student type in Banner for past records, therefore both types appear in our Student Database reports.



TABLE 1.8 FALL HEADCOUNT BY RACE/ETHNICITY - 5 YEAR TREND

Fall Term	White	Black	Hispanic	Asian	Other/	2 or More	Total
2018-19	2,568	477	206	48	27	64	3,390
2019-20	2,577	496	229	49	26	60	3,437
2020-21	2,255	446	197	53	24	43	3,018
2021-22	2,044	443	204	35	17	50	2,793
2022-23	2,011	431	209	35	18	60	2,764

SECTION 2. ENTERING CLASS & UNDUPLICATED HEADCOUNT

TABLE 2.1 FALL 2023 ENTERING CLASS CHARACTERISTICS

	Full-Time	Part-Time	Total
Degree/Cert Seeking First-Time	264	212	476
Degree/Cert Seeking Transfer-in	65	71	136
Non-Degree/Cert Seeking First-Time	3	19	22
Total	332	302	634
<i>% of Total Entering Class Represented by FTIC's</i>	75% (Total) 42% (Full-Time)		

Source (Table 2.1): State Report [Student Database] FCS 2023-2024 Postsecondary_Headcount

"Postsecondary Headcount Enrollment – Entering Class", pg. 7

*

Source (following three charts): State Report [Student Database] Postsecondary_Headcount

"Postsecondary Headcount Enrollment – Entering Class", documents for past 5-years, pg. 7

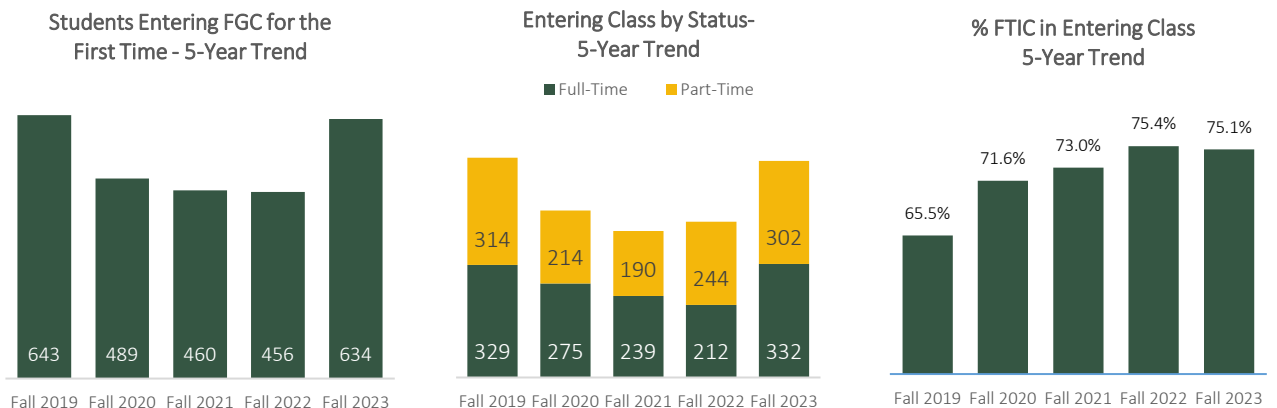
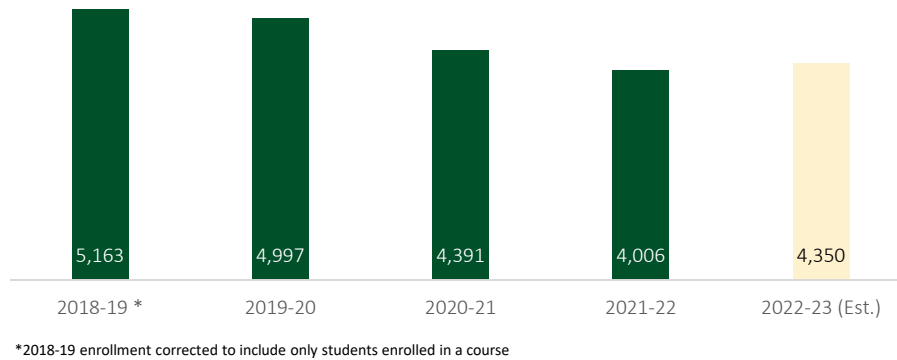


TABLE 2.2 UNDUPLICATED HEADCOUNT - 5 YEAR TREND

Source: FCS Fact Books, Table 2.2T - All Students Enrolled in a Course
2022-23 Estimate from APEX Enrollment Reports 7/11/23



SECTION 3. FULL-TIME EQUIVALENT (FTE) ENROLLMENT

Source for FTE charts: State Report [Student Database] (Spring 2023) **FTCOLFF** "FTE Enrollment: Funded Lower/Upper Division", pg. 1-5

TABLE 3.1 2022-2023 FTE BY TERM BY PROGRAM AREA

	Summer	Fall	Spring	Total
Advanced & Professional (A&P)	241.2	509.6	477.3	1,228.1
Postsecondary Vocational (PSV)	61.2	161.2	147.0	369.4
Postsecondary Adult Vocational (PSAV)	57.1	104.6	122.2	283.9
Educator Preparation Institute (EPI)	2.8	7.4	6.3	16.5
Developmental Education (DE)& Other	17.8	17.2	16.9	51.9
Total LOWER DIVISION	380.1	803.0	770.7	1,949.8
Upper Division (A&P)	11.0	45.8	51.2	108.0
TOTAL College	391.1	848.8	821.9	2,057.8

TABLE 3.2 FTE – 5-YEAR TREND

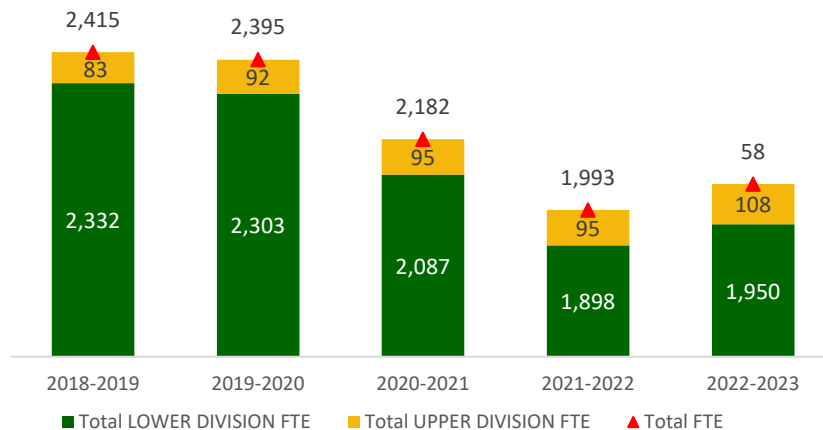


TABLE 3.3 FTE – 5-YEAR TREND BY PROGRAM AREA

	2018-2019	2019-2020	2020-2021	2021-2022	2022-2023
Advanced & Professional (A&P)	1,469.3	1,484.7	1,340.3	1,236.3	1,228.1
Postsecondary Vocational (PSV)	520.3	475.7	398.5	365.8	369.4
Postsecondary Adult Vocational (PSAV)	272.1	269.9	298.5	232.3	283.9
Educator Preparation Institute (EPI)	12.2	13.5	13.8	16.0	16.5
Developmental Education (DE)& Other	58.2	59.4	36.4	47.6	51.9
Total LOWER DIVISION	2,332.1	2,303.2	2,087.5	1,897.0	1,953.8
Upper Division (A&P)	82.6	91.5	94.8	95.2	108.0
TOTAL College	2,414.7	2,394.7	2,182.3	1,993.2	2,061.8

Source for FTE charts: State Report [Student Database] (Spring 2023) **FTECOLF** "FTE Enrollment: Funded Lower/Upper Division", pg. 1 & 2



SECTION 4. INSTRUCTION

TABLE 4.1 FALL 2023 AVERAGE CLASS SIZE BY DISCIPLINE

Discipline	Average Class Size
Advanced & Professional	16.8
Postsecondary Vocational	13.9
Postsecondary Adult Vocational	8.9
Developmental Education	12.8
All, Excluding CWE & Adult Education	14.4

Source: Florida Gateway College APEX Enrollment Report; retrieved 10/6/23

TABLE 4.2 CLASS SIZE – 5-YEAR TREND

	2018-19	2019-20	2020-21	2021-22	2022-23
Summer	12.5	14.4	14.4	11.2	10.9
Fall	15.4	13.8	13.8	12.8	13.4
Spring	13.1	13.8	12.5	12.1	12.7
Year (Summer, Fall, Spring)	13.9	13.9	13.4	12.2	12.6

Source: Florida Gateway College APEX Enrollment Reports; Note: Excludes Continuing Workforce Education (CWE) and Adult Education courses

TABLE 4.3 FALL 2023 COLLEGE CREDIT COURSE ENROLLMENT BY METHOD OF DELIVERY

Source: Florida Gateway College APEX Enrollment Report (excludes PSAV and CWE); retrieved 10/5/23

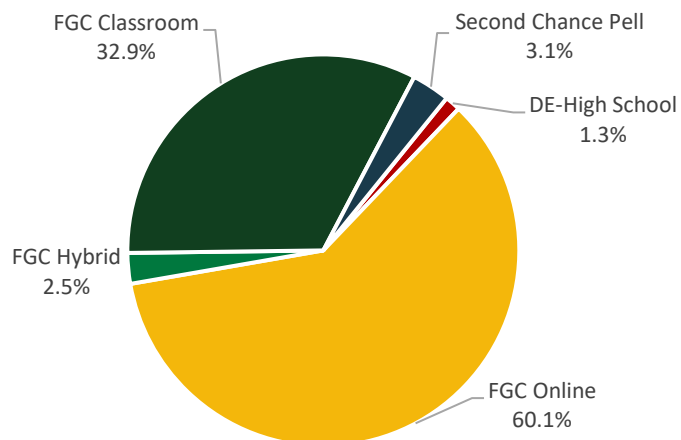


TABLE 4.4 2022-2023 COLLEGE CREDIT COURSE SUCCESS BY INSTRUCTIONAL METHOD

(excludes PSAV and CWE)

pop= course enrollments

Source Florida Gateway College APEX Enrollment Report

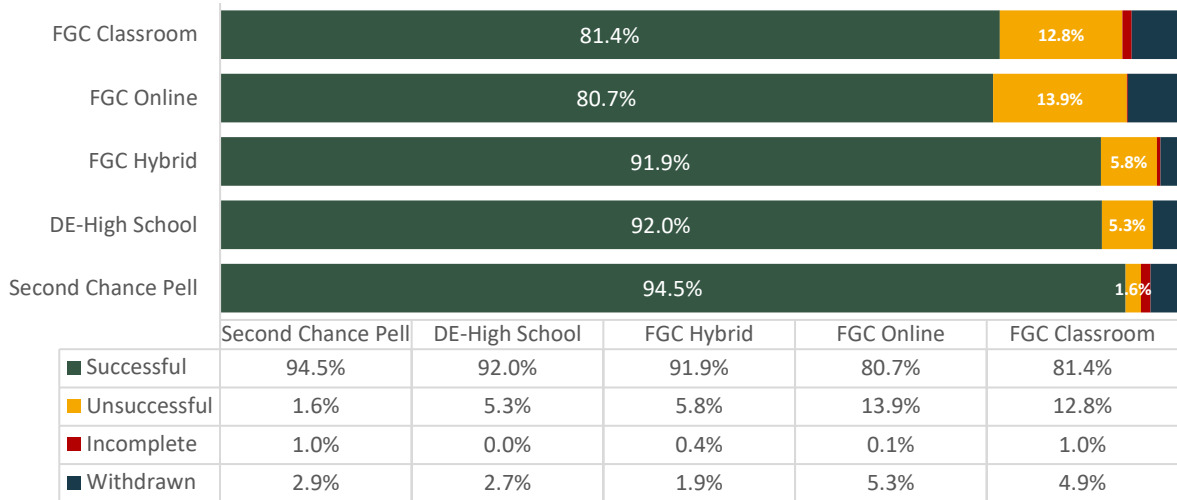


TABLE 4.5 FALL COURSE TOTAL ENROLLMENT PERCENT BY METHOD OF DELIVERY 5-YEAR TREND

	Fall 2019	Fall 2020	Fall 2021	Fall 2022	Fall 2023
FGC Online	48.70%	53.70%	49.64%	52.98%	51.68%
FGC Classroom	40.58%	37.95%	39.68%	39.85%	42.33%
FGC Hybrid	6.20%	5.48%	5.07%	2.55%	2.17%
DE-High School	4.40%	2.82%	3.38%	1.27%	1.12%
Second Chance Pell	-n/a-	-n/a-	2.19%	3.30%	2.70%

Source: Florida Gateway College APEX Enrollment Reports (excludes CWE, but includes PSAV)

Please note that the percentages in this table (which **includes** occupational credit courses) differ from the percentages for college credit enrollments noted in the previous Fall 2023 Course Enrollment and Success charts.



SECTION 5. PROGRAMS

Program Offerings at Florida Gateway College

CODE	Program	FLDOE CIP	Federal CIP	Hours	Hr Type	Program Type
BEC	Early Childhood Education, B.S.	1101312100	13.1210	120	S	BS
BEE	Elementary Education, B.S.	1101312021	13.1202	120	S	BS
BSN	Nursing, B.S.	1105138012	51.3801	121	S	BS
WRM	Water Resources Management, B.A.S	1100302052	03.0205	121	S	BAS
LIBA	Associate in Arts	1192401010	92.4010	60	S	AA
AGRB	Agribusiness Management, A.S.	1101010100	01.0101	61	S	AS
BAVM	Business Administration, A.S.	1552020102	52.0201	60	S	AS
CITN	Computer Information Technology, A.S.	1511010307	11.0103	60	S	AS
CPVM	Computer Programming and Analysis, A.S.	1511020101	11.0201	60	S	AS
CRJL	Criminal Justice Technology, A.S.	1743010302	43.0103	60	S	AS
CYSC	Cybersecurity, A.S.	1511100308	11.1003	60	S	AS
DMDA	Digital Media And Design, A.S.	1611080103	11.0801	60	S	AS
EECE	Early Childhood Education, A.S.	1413121004	13.1210	60	S	AS
EMSA	Emergency Medical Services Technology, A.S.	1351090402	51.0904	73	S	AS
ENST	Environmental Science Technology, A.S.	1703010401	03.0104	64	S	AS
HIMT	Health Information Technology, A.S.	1351070700	51.0707	70	S	AS
BRTA	LPN to RN Bridge: Traditional Full-Time, A.S.	1351380100	51.3801	72	S	AS
BRFA	LPN-RN Bridge Track: Fast-Track Part-Time, A.S.	1351380100	51.3801	72	S	AS
OPMT	Operations Management Technology, A.S.	1652020501	52.0205	60	S	AS
PTAA	Physical Therapist Assistant, A.S.	1351080601	51.0806	74	S	AS
NRVA	Registered Nursing , A.S.	1351380100	51.3801	72	S	AS
ASMT	Automotive Service Management Technology, A.A.S.	0615080300	15.0803	68	S	AAS
ACGC	Accounting Technology Management, C.C.C.	0552030205	52.0302	27	S	CCC
ACTO	Accounting Technology Operations, C.C.C.	0552030203	52.0302	18	S	CCC
ACTS	Accounting Technology Specialist, C.C.C.	0552030204	52.0302	12	S	CCC
AHRT	Advanced Certificate in Horticulture, C.C.C.	0101060505	01.0605	30	S	CCC
DMAC	Animation, C.C.C.	0610010507	10.0105	15	S	CCC
AERB	Automotive Service Technology, Basic, C.C.C.	0615080301	15.0803	24	S	CCC
AERC	Automotive Technology, C.C.C.	0615080302	15.0803	44	S	CCC
BENT	Business Development & Entrepreneurship, C.C.C.	0552070306	52.0703	25	S	CCC
SBMD	Business Management, C.C.C.	0552070101	52.0701	24	S	CCC
CCCM	Child Care Center Management, C.C.C.	0419070906	19.0709	12	S	CCC
CDEI	Child Development Early Intervention Specialization, C.C.C.	0419070904	19.0709	36	S	CCC
COSP	Computer Office Specialist with Programming, C.C.C.	0511020103	11.0201	18	S	CCC
CSSP	Computer Support Specialist with Programming, C.C.C.	0511020200	11.0202	33	S	CCC
CJTS	Criminal Justice Technology Specialist, C.C.C.	0743010304	43.0103	24	S	CCC
ECIS	Early Childhood Inclusion Specialization, C.C.C.	0413121000	13.1210	12	S	CCC
CBTC	Educator Preparation Institute, C.C.C.	5551399990	13.9999	24	S	CCC
EMBA	Emergency Medical Technician, C.C.C.	0351090415	51.0904	12	S	CCC



CODE	Program	FLDOE CIP	Federal Cip	Hours	Hour Type	Program Type
ESTC	Environmental Science Technician, C.C.C.	0703010407	03.0104	33	S	CCC
CJHS	Homeland Security Specialist, C.C.C.	0743010306	43.0103	9	S	CCC
HORT	Horticulture, C.C.C.	0101060504	01.0605	18	S	CCC
ITSC	Infants and Toddlers Specialization, C.C.C.	0419070907	19.0709	12	S	CCC
DMMD	Multimedia Design, C.C.C.	0650010208	50.0102	15	S	CCC
CSNI	Network Infrastructure, C.C.C.	0511100114	11.1001	21	S	CCC
PARA	Paramedic, C.C.C.	0351090405	51.0904	42	S	CCC
PSSC	Preschool Specialization, C.C.C.	0419070908	19.0709	12	S	CCC
CGAC	Video Game Design, C.C.C.	0611080304	11.0803	24	S	CCC
DMVP	Video Production, C.C.C.	0609070210	09.0702	12	S	CCC
WQTC	Water Quality Technician, C.C.C.	0703010404	03.0104	18	S	CCC
MCDG	Medical Coder/Biller, A.T.D.	0351071400	51.0714	37	S	ATD
COSM	Cosmetology, O.C.	0612040102	12.0401	1200	C	OC
CSPE	Facial Specialty, O.C.	0612040806	12.0408	220	C	OC
CSPN	Nail Specialty, O.C.	0612041005	12.0410	180	C	OC
BCRA	Correctional Basic Recruit, O.C.	0743010200	43.0102	420	C	OC
XLEC	Law Enforcement to Corrections Basic Recruit, O.C.	0743010205	43.0102	198	C	OC
BLEA	CMS Law Enforcement - Basic Recruit, O.C.	0743010700	43.0107	770	C	OC
XCLA	Correctional Officer to Law Enforcement Basic Recruit, O.C.	0743010702	43.0107	518	C	OC
FPOA	Fire Science Apparatus Operator, O.C.	0743020302	43.0203	80	C	OC
FIRF	Firefighter Minimum Standards, O.C.	0743020304	43.0203	492	C	OC
FFEA	Firefighter/EMT Combined, O.C.	0743020313	43.0203	792	C	OC
ACRV	Commercial Heating and Air Conditioning Technology, O.C.	0615050110	15.0501	1350	C	OC
AWTC	Advanced Welding Technology, O.C.	0648050806	48.0508	750	C	OC
WTVC	Welding Technology, O.C.	0648050805	48.0508	1050	C	OC
CDLP	Commercial Vehicle Driving, O.C.	0649020500	49.0205	320	C	OC
PBTM	Phlebotomy, O.C.	0351100901	51.1009	165	C	OC
LPNA	Practical Nursing, O.C.	0351390101	51.3901	1350	C	OC
CNAC	Nursing Assistant (Articulated), O.C. [New Spring 2023]	0351390203	51.3902	165	C	OC



I. ASSOCIATE IN ARTS

Table I.1 Headcount Enrollment 2022-2023

	Number	Percent of Total
Total	2,395	
Male	690	28.8%
Female	1,704	71.1%
Unknown ⁷	1	0.1%
Dual Enrolled	677	28.3%

Source: [Student Database] 2022-23 **AA1ARPT** "AA-1A Verification Report", pg.1; 6/13/23

Table I.2 Associate in Arts Declared Majors: 5-Year Trend

2018-19	2019-20	2020-21	2021-22	2022-23
3,077	3,048	2,702	2,517	2,395

Source: [Student Database] **AA1ARPT** "AA-1A Verification Report", (various years)

Table I.3 Fall 2023 Associate in Arts Enrollment by Area of Study

Area of Study	Percent
AA-Arts, Hum, Comm, Design	1.5%
AA-Business	6.2%
AA-Communications	1.0%
AA-Education	6.2%
AA-General Studies	38.0%
AA-Health Sciences	30.9%
AA-Indus, Manfg, Construc, Trans	0.2%
AA-Public Safety-Crim Justice	1.0%
AA-Social Science	3.9%
AA-STEM	4.3%
Undecided	6.8%

Source: APEX Report Student Enrollment Summary w- Offset_Fall2023_05Oct2023

Table I.4 Retention Rates 5-Year Trend - Associate in Arts

Source: [ACCOUNTABILITY] **Accountability 2023** "PERA3543f_CNT2022_M1P2_CC12" M1P2 Accountability Reports (various years)

College	2018-19 Fall 2014 Cohort	2019-20 Fall 2015 Cohort	2020-21 Fall 2016 Cohort	2021-22 Fall 2017 Cohort	2022-23 Fall 2018 Cohort
<i>FCS System-Wide</i>	64.49	63.86	64.08	62.54	62.94
Florida Gateway College	61.37	65.04	67.42	61.07	60.78

Table I.5 Success Rates 5-Year Trend - Associate in Arts

Source: [ACCOUNTABILITY] **Accountability 2023** "PERA3543f_CNT2022_M1P2_CC12" M1P2 Accountability Reports (various years)

College	2018-19 Fall 2014 Cohort	2019-20 Fall 2015 Cohort	2020-21 Fall 2016 Cohort	2021-22 Fall 2017 Cohort	2022-23 Fall 2018 Cohort
<i>FCS System-Wide</i>	85.99	85.52	85.53	84.63	84.03
Florida Gateway College	86.70	84.96	87.50	85.66	87.45

⁷ Unknown gender or race is included in this count

Table I.6 Aggregated Course Success Rates for Selected Core Courses 2022-2023Source: FGC Student Database APEX Report *Grade-Analysis* Summer 2022-Spring 2023

Course	Successful	Unsuccessful	Withdrawn
AMH2010	90.7%	9.3%	0.0%
AMH2020	81.5%	13.6%	4.9%
BSC2010C	79.0%	15.9%	5.1%
BSC2085	89.3%	9.7%	1.0%
BSC2085L	91.5%	7.2%	1.3%
CHM2045	87.6%	5.6%	6.7%
CHM2045L	91.9%	1.2%	7.0%
ENC1101	73.7%	23.8%	2.5%
ENC1102	79.6%	14.4%	6.0%
MAC1105	71.4%	17.3%	11.3%
MAT1033	61.4%	27.4%	11.3%
MGF1106	60.3%	30.5%	9.2%
PSY2012	83.7%	13.7%	2.6%
SPC2608	82.6%	9.4%	8.0%
STA2023	76.3%	15.1%	8.6%
Overall	77.4%	16.5%	6.1%

Table I.7 Associate in Arts Graduates- 5-Year TrendSource: [Student Database] 2022-23 Spring EOT **AA1ARPT** "AA-1A Verification Report", pg.1; 6/13/23

2018-19	2019-20	2020-21	2021-22	2022-23
382	378	366	308	329

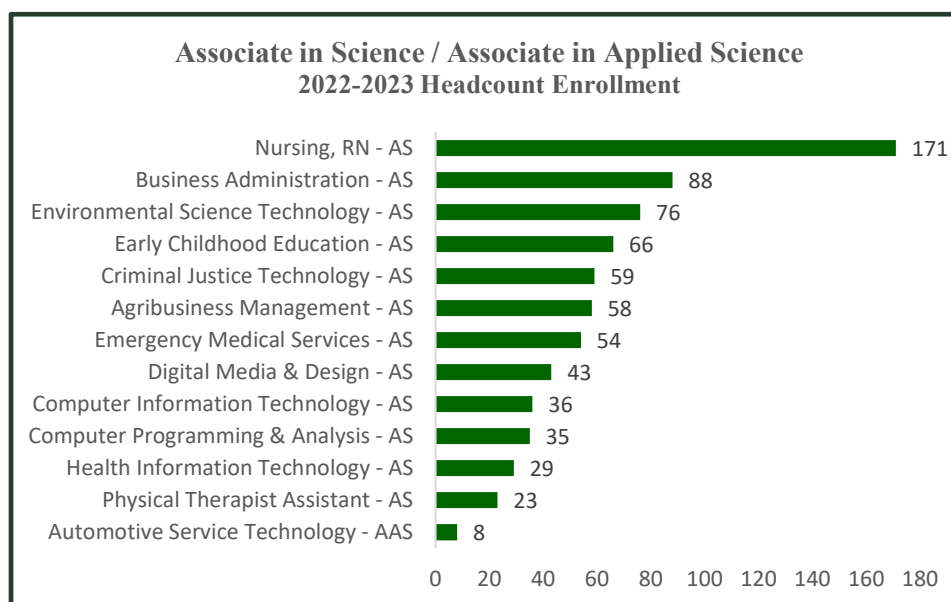
Table I.8 Continuing Education Rates for A.A. Completers – 5-Year Trend

FETPIP (Florida Education & Training Placement Information Program) reports for 2022-23 have not yet been released. Therefore, this table will be added at a later date.



II. ASSOCIATE IN SCIENCE / ASSOCIATE IN APPLIED SCIENCE

Table II.1 A.S. / A.A.S. 22-23 Headcount Enrollment



Source (Tables II.1&II.2): [Student Database] Spring EOT 2022-23 **AA1ARPT** "AA-1A Verification Report", Various Years

Table II.2 A.S. / A.A.S. Declared Majors – 5-Year Trend

(Note: Program titles align with State CIP titles)

Program	2018-19	2019-20	2020-21	2021-22	2022-23
Nursing, RN - AS	265	213	181	161	171
Business Administration - AS	87	97	96	96	88
Criminal Justice Technology - AS	78	88	76	65	59
Early Childhood Education - AS	85	104	71	52	66
Agribusiness Management - AS	-	70	66	78	58
Emergency Medical Services - AS	105	108	62	64	54
Physical Therapist Assistant - AS	46	44	40	34	23
Health Information Technology - AS	42	46	38	33	29
Digital Media & Design - AS	-	-	36	37	43
Environmental Science Technology - AS	71	41	33	28	76
Computer Information Technology - AS	31	37	26	31	36
Computer Programming & Analysis - AS	23	30	19	21	35
Automotive Service Technology - AAS	-	7	7	5	8

Table II.3 Retention Rate - Associate in Science/Associate in Applied Science

Source: [ACCOUNTABILITY] **Accountability 2023** "PERA3543f_CNT2022_M1P2_CC12" M1P2 Accountability Reports (various years)

College	2018 Fall 2014 Cohort	2019 Fall 2015 Cohort	2020 Fall 2016 Cohort	2021 Fall 2017 Cohort	2022 Fall 2018 Cohort
<i>FCS System-Wide</i>	54.71	56.28	57.98	54.28	56.23
Florida Gateway College	58.49	66.67	80.33	69.64	76.47

Table II.4 Success Rate - Associate in Science/Associate in Applied ScienceSource: [ACCOUNTABILITY] **Accountability 2023** "PERA3543f_CNT2022_M1P2_CC12" M1P2 Accountability Reports (various years)

College	2018 Fall 2014 Cohort	2019 Fall 2015 Cohort	2020 Fall 2016 Cohort	2021 Fall 2017 Cohort	2022 Fall 2018 Cohort
<i>FCS System-Wide</i>	82.29	82.55	82.33	81.30	80.46
Florida Gateway College	86.79	93.33	88.52	83.93	94.12

Table II.5. Associate in Science/ Associate in Applied Science Graduates – 5-Year TrendSource: [Student Database] 2022-23 **AA1ARPT** "AA-1A Verification Report", Various Years, pg. 2 & 4

2018-19	2019-20	2020-21	2021-22	2022-23
204	171	139	161	110

Table II.6 Continuing Education Rates for A.S. Completers – 5-year Trend

FETPIP (Florida Education & Training Placement Information Program) reports for 2022-23 have not yet been released. Therefore, this table will be added at a later date.

Table II.7 Placement of 2020-21 A.S. / A.A.S. Completers

Source: FCS FETPIP 2022 Follow-up Aggregated Outcome Data. For 2020-21 graduates.

Associate in Science/ Associate in Applied Science Degrees	Number of Graduates in Pool	Positive Placements	Placement %
Nursing RN	63	63	100%
Early Childhood Education	12	12	100%
AGGREGATED TOTAL for All A.S./A.A.S. PROGRAMS	119	107	90%

Notes: The "pool" includes completers with useable match data. Vocational program "positive placements" include completers found in jobs *in their field of study*, continuing with their education, or joining the armed forces upon graduation; **TOTALS include ALL Programs**. Very low enrollment programs (indicated by an asterisk) are not shown.

Table II.8. Average Salaries for 2020-21 A.S. Graduates

Associate in Science (A.S.) Degree Programs	Average Annual Salary
Nursing RN (ASDN)	\$67,526
Early Childhood Education, A.S.	\$39,145
Physical Therapist Assistant, A.S. ⁸	\$37,636
<i>Earnings for other AS degree completers are not available individually. However, they are included in the average salary total for AS graduates.</i>	
College Average for A.S. Programs (85% Found Employed; 90% Positive Placement Rate)	\$57,506

Source: 2012-2021 FETPIP Aggregated Outcome Data Reports from FLDOE; 2022 Follow-up. Note: Positive Placement Rate includes graduates who were found employed and students continuing education.

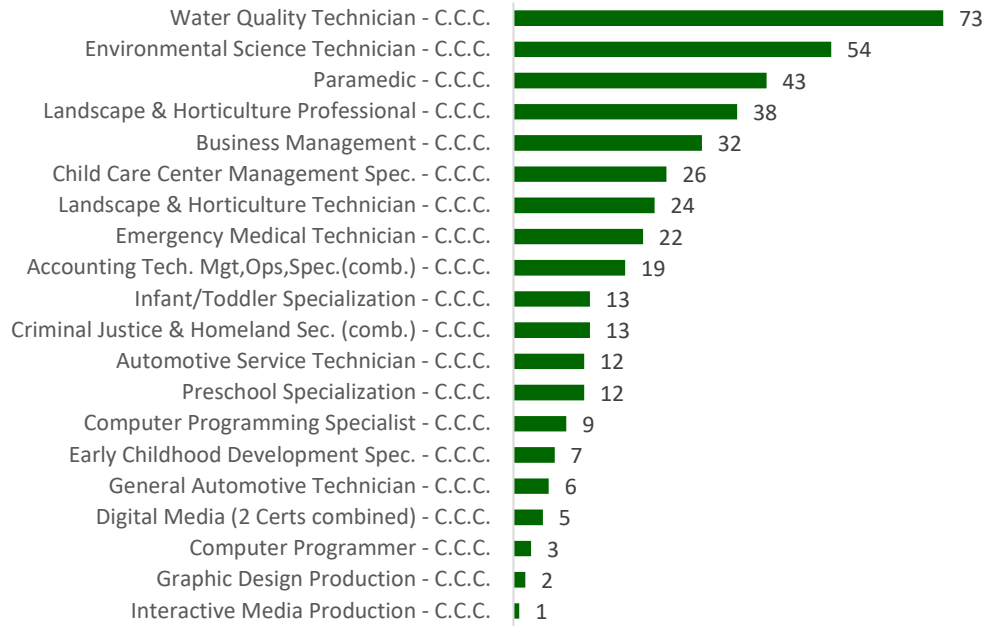
⁸ FETPIP provided annualized salary for PTA graduates, but placement *rate* not provided due to insufficient graduate numbers placed (must be 10 or more).

III. POSTSECONDARY VOCATIONAL (COLLEGE CREDIT) CERTIFICATES

Source (III.1 & III.2): State Report (Student Database) **AA1ARPT** "AA-1A VERIFICATION REPORT" dated 6/13/23

Table III.1 Postsecondary Vocational Certificates

III.1 Postsecondary Vocational (College Credit) Certificates 2022-2023 Headcount Enrollment



III.2 College Credit Certificate/Applied Technology Diploma Declared Majors

Headcount Enrollment; 5-Year Trend

Program	2018-19	2019-20	2020-21	2021-22	2022-23
Landscape & Horticulture Professional – C.C.C.	65	37	58	58	38
Business Management – C.C.C.	30	32	32	42	32
Paramedic – C.C.C.	64	70	44	41	43
Water Quality Technician – C.C.C.	24	19	15	35	73
Accounting Technology Management – C.C.C. (3 certs.)	20	17	22	34	19
Emergency Medical Technician – C.C.C.	45	45	25	27	22
Landscape & Horticulture Technician – C.C.C.	34	34	22	22	24
Automotive Service Technician – C.C.C.	-	5	15	19	12
Child Care Center Management Spec. – C.C.C.	34	23	14	18	26
Preschool Specialization – C.C.C.	60	44	29	15	12
Environmental Science Technician – C.C.C.	-	17	17	14	54
Infant/Toddler Specialization – C.C.C.	7	3	3	12	13
Early Childhood Development Spec. – C.C.C.	8	11	9	10	7
Computer Programming Specialist – C.C.C.	11	6	7	6	9
Interactive Media Production – C.C.C.	11	18	6	6	8
General Automotive Technician – C.C.C.	-	4	7	4	6
Computer Programmer – C.C.C.	6	6	4	3	3
Graphic Design Production – C.C.C.	10	7	3	2	2
Digital Media/Multimedia Production – C.C.C.	-	-	-	-	3
Digital Media/Video Production – C.C.C.	-	-	-	-	2
Criminal Justice Tech./Homeland Security – C.C.C. (comb.)					13
Medical Coder Biller ATD	50	47	45	38	32

III.3 Retention Rates College Credit / ATD Certificates

Source: FCS Accountability "PERA3543f_ACNT2022_M1P2_CC12" 2022 Accountability Outcome Measure 1 Part 2

College	2018 Fall 2014 Cohort	2019 Fall 2015 Cohort	2020 Fall 2016 Cohort	2021 Fall 2017 Cohort	2022 Fall 2018 Cohort
<i>FCS System-Wide</i>	<i>91.86</i>	<i>91.99</i>	<i>93.14</i>	<i>93.21</i>	<i>92.64</i>
Florida Gateway College	77.78	77.78	100.00	90.00	82.76

III.4 College Credit Certificate / ATD Certificate Graduates – 5-Year Trend

Source: State Report (Student Database) AA1ARPT "AA-1A VERIFICATION REPORT" dated 6/13/23, pgs. 12 & 17

2018-19	2019-20	2020-21	2021-22	2022-23
163 / 5	200 / 2	120 / 10	164 / 8	117 / 5

III.5 Placement of 2020-2021 College Credit Certificate (PSVC) Completers

Source: FCS FETPIP 2022 Follow-up Aggregated Outcome Data. For 2020-21 graduates.

College Credit Certificates (Postsecondary Vocational)	Number of Graduates in Pool	Positive Placements	Placement %
Paramedic	19	*	*
Emergency Medical Technician	16	11	69%
Preschool Specialization	12	11	92%
TOTAL PSVC PROGRAMS	99	68	69%

Notes: The “pool” includes completers with useable match data. Vocational program “positive placements” include completers found in jobs *in their field of study*, continuing with their education, or joining the armed forces upon graduation; **TOTALS include ALL Programs.** Some discontinued or very low enrollment programs (indicated by an asterisk*) are not shown.

III.6 Average Salaries for 2020-2021 Graduates

College Credit Certificate (Postsecondary Vocational) Programs	
Paramedic	\$62,158
Emergency Medical Technician (EMT)	\$44,895
College Average for PSVC Vocational Programs (69% Placement Rate)	\$47,585
<i>Earnings for PSV certificate completers in other programs are not available individually. However, they are included in the average salary total and completion rate for PSV completers.</i>	

Source: 2020-2021 FETPIP Aggregated Outcome Data Reports from FLDOE; 2022

IV. POSTSECONDARY ADULT VOCATIONAL CERTIFICATES

Source (Tables IV.1 & IV.2): [Student Database] 2022-23 AA1ARPT “AA-1A Verification Report”, Various Years

Table IV/1 Postsecondary Adult Vocational Certificates

Table IV.1 Postsecondary Adult Vocational Certificates
2022-2023 Headcount Enrollment

Source: AA1A_Enrollment_and_Completions dated 6/13/23

Cosmetology - Voc. Cert.-	82
Correction Officer-Traditional - Voc. Cert.	67
Commercial Vehicle Driving (CDL) - Voc. Cert.	62
Practical Nursing - Voc. Cert.	54
Crossover Corrections to Law - Voc. Cert.	53
Welding Technology-Advanced - Voc. Cert.	51
Welding Technology - Voc. Cert.	49
Fire Fighter - Voc. Cert.	49
Fire Fighter/EMT Combined - Voc. Cert.	41
FL Law Enforcement Academy - Voc. Cert.	40
Air Conditioning Refrigeration (HVAC) - Voc. Cert.	38
Facials Specialty - Voc. Cert.	37
Phlebotomy - Voc. Cert.	26
Crossover Law to Corrections - Voc. Cert.	1



Table IV.2 Occupational Certificate Declared Majors; 5-Year Trend

Program	2018-19	2019-20	2020-21	2021-22	2022-23
Cosmetology - Voc. Cert. -	97	98	86	85	82
Practical Nursing - Voc. Cert.	72	77	67	57	54
Fire Fighter/EMT Combined - Voc. Cert.	35	43	56	*39	41
Welding Technology - Voc. Cert.	42	42	41	45	49
Welding Technology-Advanced - Voc. Cert.	37	28	27	45	51
FL Law Enforcement Academy - Voc. Cert.	71	86	69	43	40
Crossover Corrections to Law - Voc. Cert.	54	50	30	36	53
Facials Specialty - Voc. Cert.	-	27	19	35	37
Fire Fighter I/II - Voc. Cert. (<i>Firefighter</i> as of 2022)	26	35	33	30	49
Correction Officer-Traditional - Voc. Cert.	106	59	156	29	67
Air Conditioning Refrigeration (HVAC) - Voc. Cert.	25	29	28	25	38
Phlebotomy - Voc. Cert.	9	8	85	22	26
Commercial Vehicle Driving – Voc. Cert.	-	-	-	19	62
Crossover Law to Corrections - Voc. Cert.	26	2	2	1	1

Table IV.3 Placement of 2020-21 Postsecondary Adult Vocational Certificate Completers

Source: FCS FETPIP 2022 Follow-up Aggregated Outcome Data. For 2020-21 graduates.

Occupational Certificates (Postsecondary Adult Vocational)	Number of Graduates in Pool	Positive Placements	Placement %
Corrections & Law Enforcement (all tracks combined)	136	113	84%
Facials Specialty	10	*	*
Firefighter I/II	13	*	*
Phlebotomy	20	13	65%
Practical Nursing	20	19	95%
TOTAL PSAV PROGRAMS	230	174	76%

Notes: The “pool” includes completers with useable match data. Vocational program “positive placements” include completers found in jobs *in their field of study*, continuing with their education, or joining the armed forces upon graduation; **TOTALS include ALL Programs**. Discontinued or very low enrollment programs (indicated by an asterisk) are not all shown.

Table IV.4 Average Salaries for 2020-21 Graduates

Source: 2019-20120 FETPIP Aggregated Outcome Data Reports from FLDOE; 2021

Occupational Certificate (Postsecondary Adult Vocational) Programs	
Corrections & Law Enforcement Officer (all tracks, average)	\$49,177
Firefighter I/II	\$54,621
Phlebotomy	\$32,296
Practical Nursing	\$47,651
<i>Earnings for PSAV certificate completers in other programs are not available individually. However, they are included in the average salary total and completion rate for PSAV completers.</i>	
College Average for PSAV Vocational Programs (76% Placement Rate)	\$47,374

V. BACCALAUREATE DEGREE PROGRAMS

Source (Tables V.1 & V.2): [Student Database] **AA1ARPT** "AA-A1 VERIFICATION REPORT", pg. 13; 6/13/2023 [& reports for prior years]

Table V.1 Baccalaureate Degrees Headcount by Enrollment 22-23

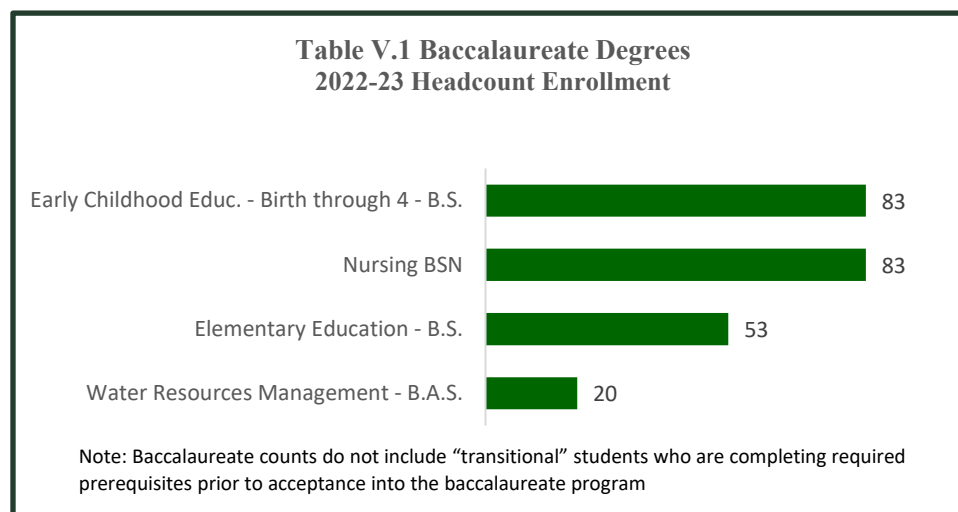


Table V.2 Baccalaureate Programs Enrollment – 5-Year Trend

Program	2018-19	2019-20	2020-21	2021-22	2022-23
Early Childhood Educ. - Birth through 4 - B.S.	76	76	82	87	83
Nursing BSN	129	99	78	61	83
Water Resources Management - B.A.S.	27	31	44	43	20
Elementary Education - B.S.	-	-	11	37	53

Note: Baccalaureate enrollment counts do not include "transitional" students who are completing required prerequisites prior to acceptance into the baccalaureate program
baccalaureate Retention- 5-Year Trend

Table V.3 Baccalaureate Programs Retention – 5-Year Trend

Source(s): [ACCOUNTABILITY] PERA3539e ACNT2022 M1P2B CC12 “2022 Accountability Outcome Measure 1 Part 2B”;
M1P2B Accountability Reports⁹

College	2018 Fall 2014 Cohort	2019 Fall 2015 Cohort	2020 Fall 2016 Cohort	2021 Fall 2017 Cohort	2022 Fall 2018 Cohort
<i>FCS System-Wide Full-Time</i>	79.6	81.7	79.9	82.5	83.0
<i>FCS System-Wide Part-Time</i>	53.0	54.2	54.5	54.8	54.9
<i>FCS System-Wide Total</i>	61.7	62.8	62.4	63.7	63.9
Florida Gateway College Full-Time	100.0	80.0	100.0	85.7	100.0
Florida Gateway College Part-Time	47.8	58.3	48.5	79.0	66.7
Florida Gateway College Total	52.0	62.1	57.5	80.0	71.21

Note: Retention rates are not reported to IPEDS for four-Year colleges in the Florida College System due to the FCS “2+2” State College System.

Table V.4 Baccalaureate Graduates – 5-Year Trend

Source: [Student Database] AA1ARPT “AA-A1 VERIFICATION REPORT”, pg. 13; 6/13/2023 [& reports for prior years]

	2018-19	2019-20	2020-21	2021-22	2022-23
Early Childhood Educ. - Birth through 4 - B.S.	9	11	23	17	16
Nursing BSN	37	51	36	26	19
Water Resources Management - B.A.S.	2	4	2	19	4
Elementary Education - B.S. (new 2020-21)	-	-	-	-	12
B.S./B.A.S. Total	48	66	61	62	51

VI. EDUCATOR PREPARATION INSTITUTE (EPI) CERTIFICATE PROGRAM

Source (Tables VI.1 & VI.2): [Student Database] AA1ARPT “AA-A1 VERIFICATION REPORT”, pg. 15; 6/13/2023 [& reports for prior years]

Table VI.1 EPI DECLARED MAJORS – 5-YEAR TREND

2018-19	2019-20	2020-21	2021-22	2022-23
35	33	39	50	48

Table VI.2 EPI Graduates – 5-Year Trend

	2018-19	2019-20	2020-21	2021-22	2022-23
EPI	25	15	20	14	18

⁹ Retention = Students who have graduated or are still enrolled.



SECTION 6. IPEDS RETENTION, GRADUATION & TRANSFER-OUT RATES

TABLE 6.1 FALL-TO-FALL OVERALL RETENTION RATES

Source: [IPEDS PERA] Part E – EF1Y2021 File Name: “CC12.IPEDS EF1Y2024”

Note: Amounts are percentages %

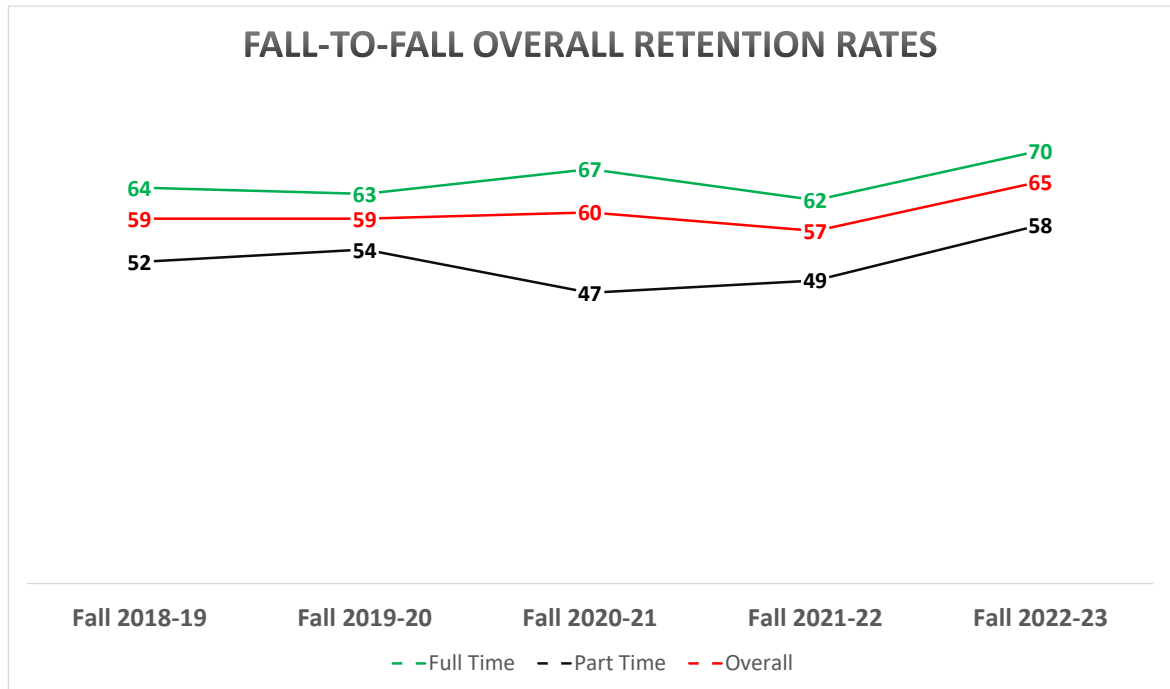


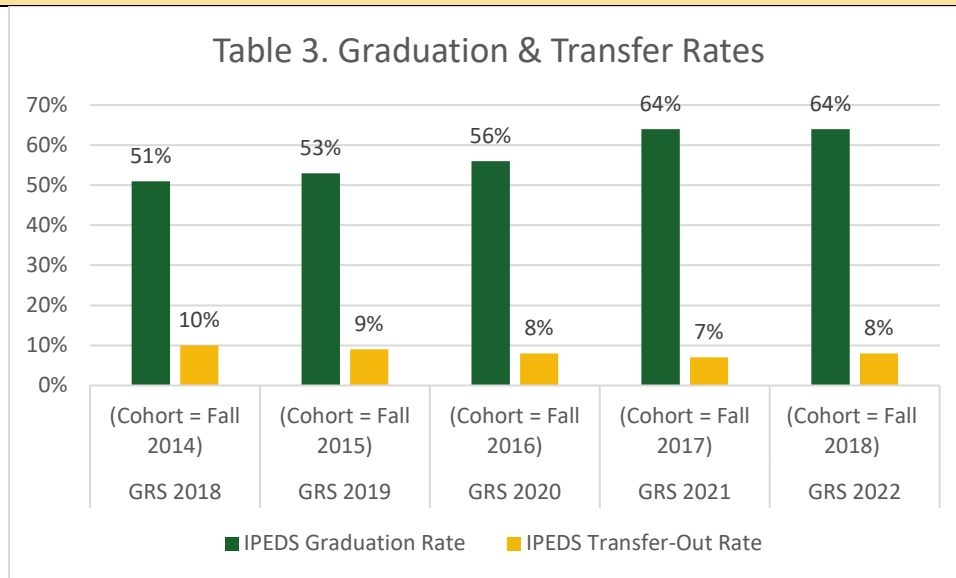
TABLE 6.2 GRADUATION & TRANSFER RATES

Chart(s) 6.2 & 6.3 Source: [IPEDS] Summary Tables for Florida Gateway College

Rates as Submitted to IPEDS in Noted Years	GRS 2018 (Cohort = Fall 2014)	GRS 2019 (Cohort = Fall 2015)	GRS 2020 (Cohort = Fall 2016)	GRS 2021 (Cohort = Fall 2017)	GRS 2022 (Cohort = Fall 2018)
Number in Cohort	284	318	296	255	330
IPEDS Graduation Rate	51%	53%	56%	64%	64%
IPEDS Transfer-Out Rate	10%	9%	8%	7%	8%



TABLE 6.3 GRADUATION & TRANSFER RATES



SECTION 7. FACULTY AND STAFF

Source (Tables 7.1-7.6): [State Database] College Employee Headcount IPEDS, "College Employee Headcount by Occupational Activity FT/PT", pg. 1, report 11/02/2023; APR2024

TABLE 7.1 FACULTY FULL-TIME & PART-TIME

INSTRUCTIONAL STAFF COMPOSITION 5-YEAR TREND

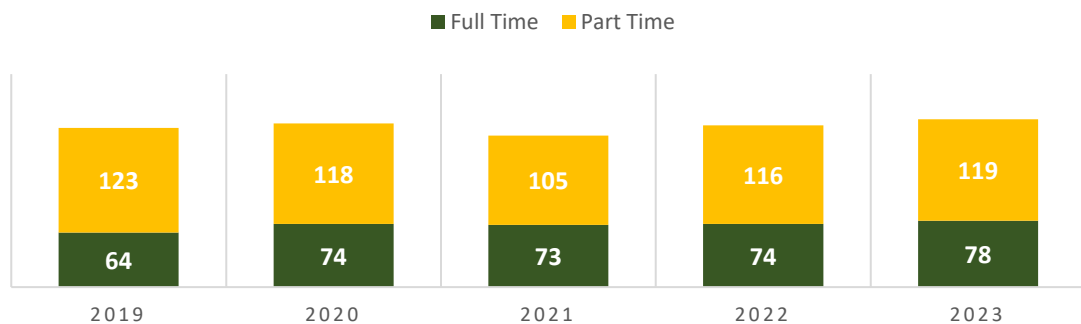


TABLE 7.2 GENDER

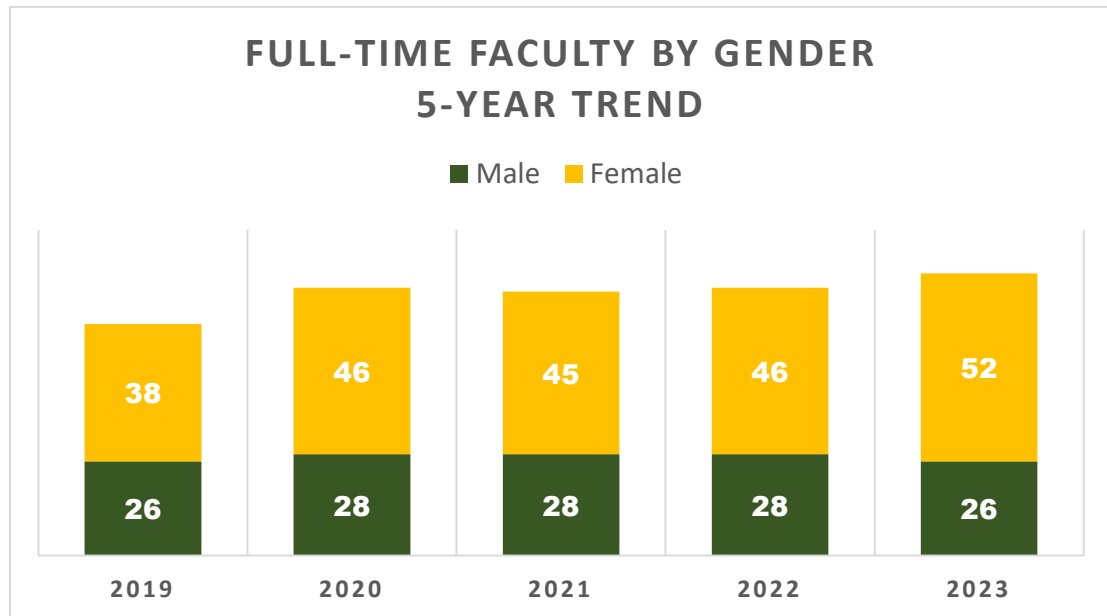


TABLE 7.3 RACE/ETHNICITY

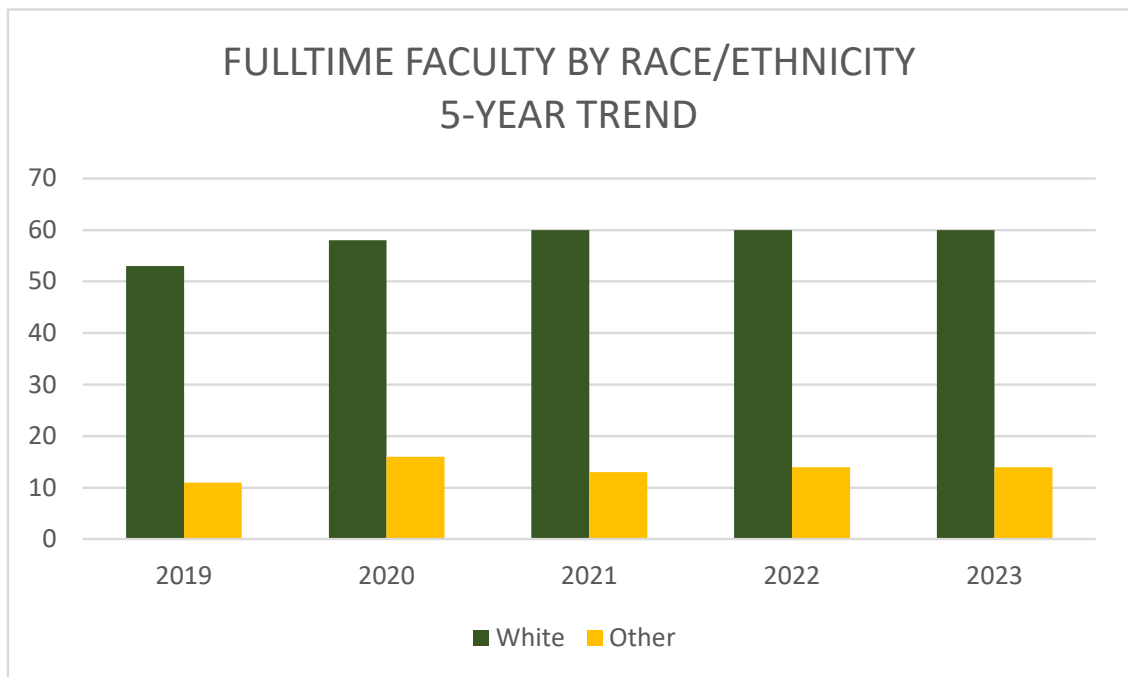


TABLE 7.4 GENDER BY OCCUPATIONAL ACTIVITY

Occupational Activity	No.	% Male	% Female
Management Occupations	4	50%	50%
Business & Financial Operations	33	27%	73%
Computer Engineering and Science	4	100%	0%
Community Service, Legal, Arts, and Media	13	54%	46%
Instruction (Full Time)	78	33%	67%
Library Technicians	2	0%	100%
Student, Academic Affairs & Other Education Services	2	100%	0%
Office, Administrative Support & Sales Occupations	74	22%	78%
Natural Resources, Construction & Maintenance Occup.	3	100%	0%
Instructional Support/Other Teaching & Instr. Support	3	33%	67%
Professional Support	5	40%	60%
Total Full-Time Employees	191	31%	69%

TABLE 7.5 EMPLOYEE HEADCOUNT BY RACE/ETHNICITY

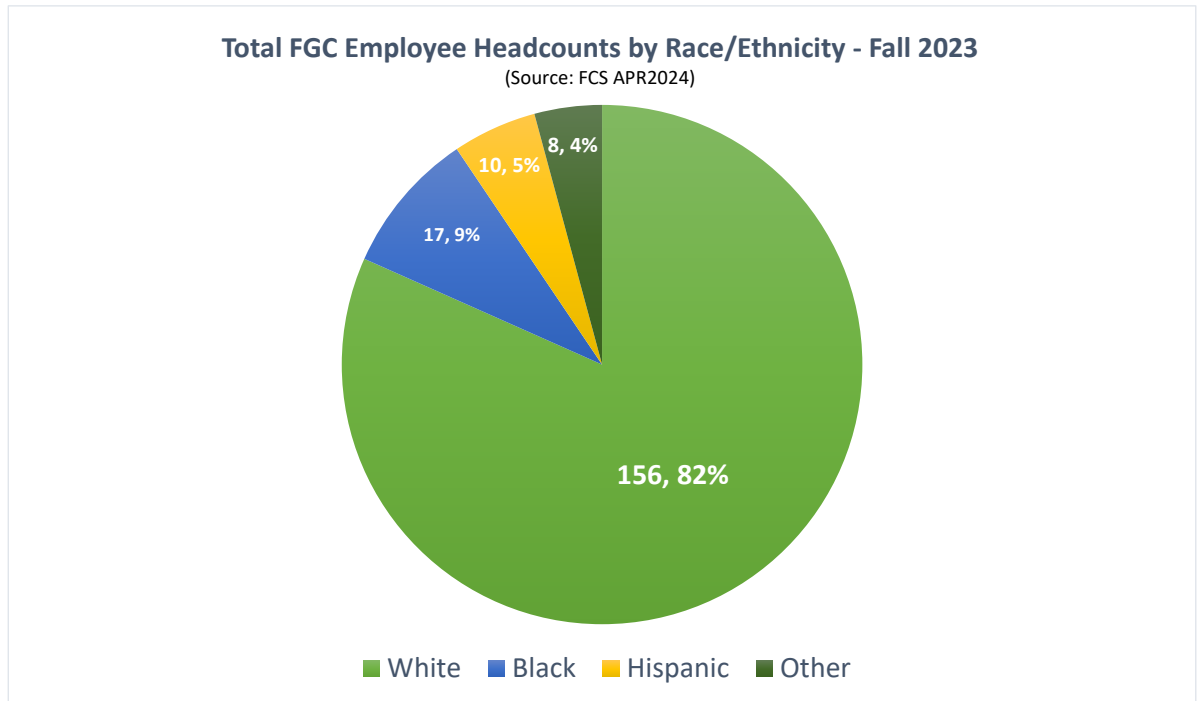
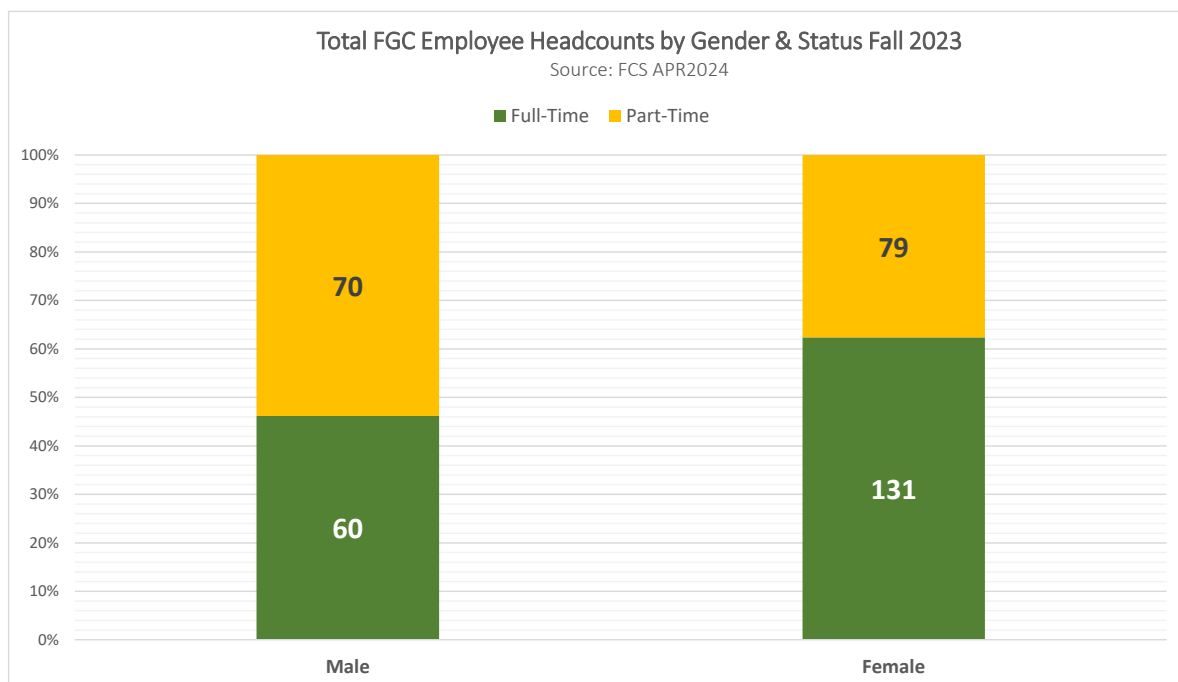


TABLE 7.6 EMPLOYEE HEADCOUNT BY GENDER/STATUS



SECTION 8. CAMPUS FACILITIES

8.1 FLORIDA GATEWAY COLLEGE SITE INVENTORY - 2020

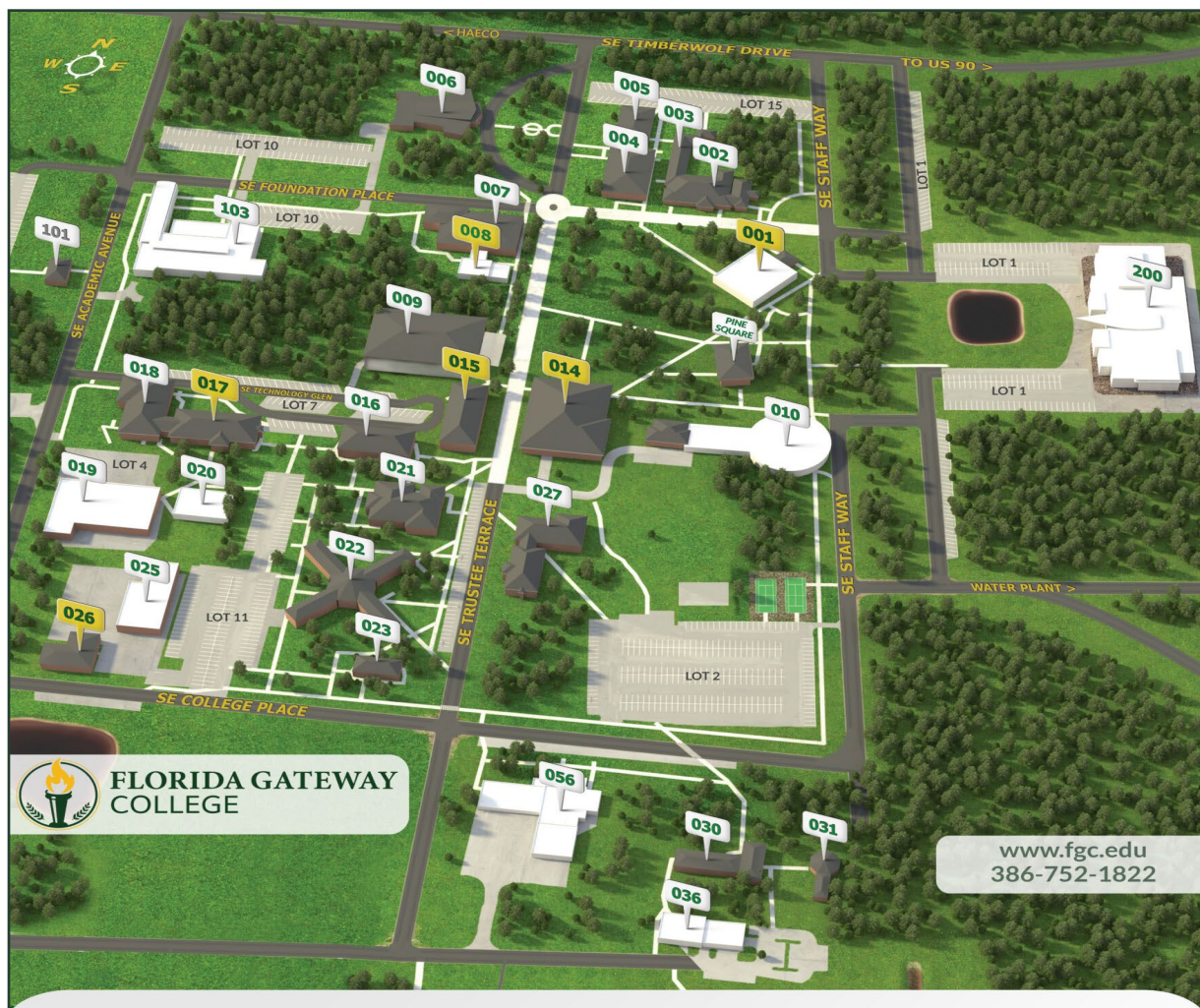
Name	Area (Acres)	Ownership	No. of Facilities	Acquisition Date	Site County
Main Campus	134.00	Fee Simple	79	1962	Columbia
Olustee Site	6.51	Fee Simple	9	1987	Baker
Gilchrist Center	1.00	Leased	1	2006	Gilchrist
Dixie County Center	0.25	Leased	1	1999	Dixie



8.2 MAIN CAMPUS MAP

149 SE College Place

Lake City, FL 32025



- 001 Administration - Business, HR, President's Office
- 002 Fine Arts - Mr. Mont Bldg.
- 003 Music Suite & Band Hall
- 004 Classrooms
- 005 Fine Arts Studio
- 006 Levy Performing Arts Center
- 007 The Hall Student Center - Accessibility Services
Campus Security / Esports / Student Activities /
Test Center
- 008 Student Success Center - TRIO / Tutoring
- 009 STEM Building - Quinn & Keith Leibfried Bldg.
- 010 Howard Center - Conference Center /
Gymnasium
- 014 Student Union Bldg. (SUB) - Wilson Bldg.
Advising / Bookstore / Financial Aid / Gateway
Grille
- 015 Enrollment Services - Mathewson Bldg.
Cashier / Enrollment Services
- 016 Business / Accounting - Milton Bldg.
- 017 Anatomy & Physiology - Combs Bldg.

- 018 Cosmetology - Bowdoin Bldg.
- 019 Welding / HVAC
- 020 Information Services
- 021 Technology - Greene Bldg.
Computer Information Technology / Digital
Design
- 022 Granger Hall - Nursing Simulation Lab /
Residence Life
- 023 Data Processing
- 025 Mailroom & Receiving - Warehouse
- 026 College Facilities and Maintenance
- 027 Teacher Preparation Academy
- 030 Wellness Center - Fitness
- 031 Greenhouse
- 056 Automotive Technology
- 101 St. Leo University
- 103 Barney E. McRae Jr. M.D. Med. Tech. Bldg.
Health Sciences / Lake City Medical Center
Auditorium
- 200 Wilson S. Rivers Library & Media Center
Welcome Center / Dual Enrollment

www.fgc.edu
386-752-1822



**FLORIDA GATEWAY
COLLEGE**

8.3 OFF-CAMPUS SITES

Avery & Twyla Roberts School of Public Service

25030 US Highway 90 E
Sanderson, FL 32087

Public Safety Center West

279 NE Jones Way
Lake City, FL 32025

FGC Dixie Center

64 NE 121st Street
Cross City, FL 32628

FGC Gilchrist Center

2821 E. Bell Avenue
Bell, FL 32619



Columbia Correctional Institution Annex

216 S.E. Corrections Way
Lake City, FL 32025

The Public Service Training Center at Olustee serves as FGC's main Public Service Training site, and is home to the College's Emergency Medical Services, Commercial Driving, Fire Fighter, Law Enforcement and Corrections programs.

The Public Safety Center West the site served as additional space for the College's Basic Corrections training program, and as needed for college and community events in 2022. It is in the process of being renovated to support the new women's flag football program and a college childcare center for students and employees.

The FGC Dixie and Gilchrist Centers offer:

- Information on FGC Programs and Enrollment processes
- Test proctoring
- Adult Education Program (Dixie Center)
- Computer lab and Printing for currently enrolled FGC students
- Study areas
- Limited facility use for non-FGC students

The Columbia Correctional Institution Annex is used as an instructional site for incarcerated students participating in the Second Chance Pell program.

In addition to the above, two district high schools have been approved as sites by SACSCOC to offer more than 50% of an accredited program at that location:

Baker County High School

1 Wildcat Drive
Glen Saint Mary, FL 32040

Dixie County High School

16077 SE Highway 19
Cross City, FL 32628



**FLORIDA GATEWAY
COLLEGE**



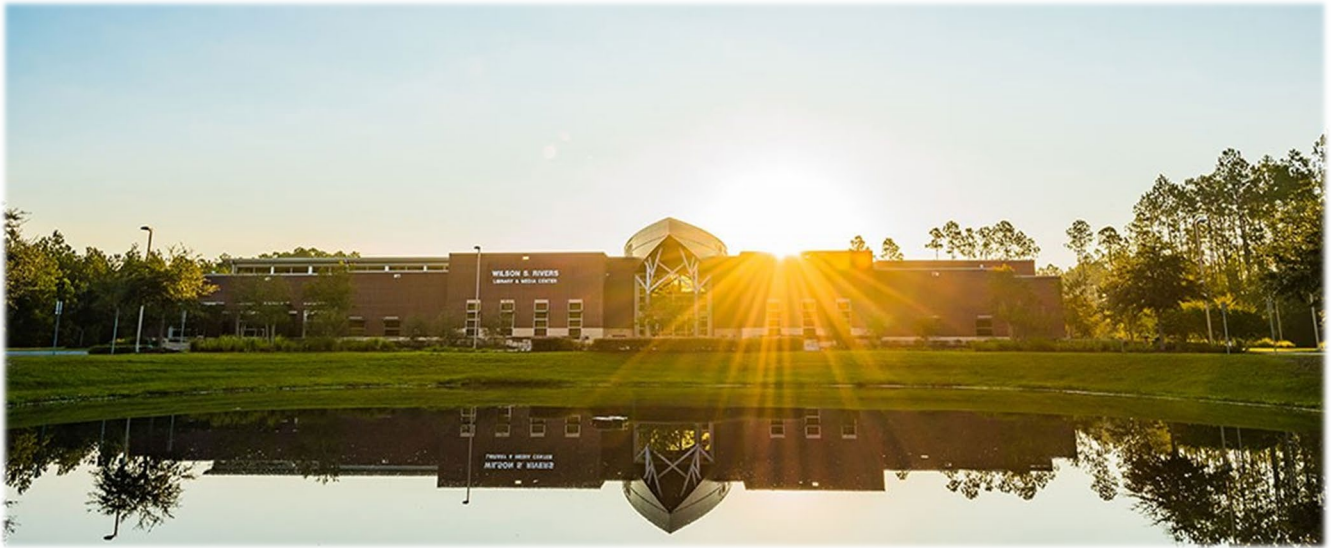
8.4 CAMPUS FACILITIES AVAILABLE FOR LEASE

The College provides several areas for use by the general public and College-sponsored organizations to hold events, including meetings, seminars, luncheons, performances, and banquets. Facilities scheduling is coordinated through the Department of Procurement and Contracts.

AVAILABLE FACILITIES & CAPACITIES	
Facility	Capacity
Howard Conference Center	1,076 with bleachers extended — 1,876 with both bleachers out and chairs on the floor; 300 to 500 with tables in banquet set-up
Lake City Medical Center Auditorium	Maximum 150 without tables/chairs
Levy Performing Arts Center	523 seats, including handicap seating
Olustee Fire Tower (Restricted Use)	Restricted Use
Pine Square	200 with tables
Wilson S. River Media Center, Atrium	Maximum 197, May be used for receptions
Wilson S. River Media Center, Room 102	Maximum occupancy is 160 people — Classroom-style seating will accommodate max of 60)
Wilson S. River Media Center, Room 153	Maximum capacity 36, classroom-style seating only



SECTION 9. WILSON S. RIVERS LIBRARY AND MEDIA CENTER



The 37,000 square foot Wilson S. Rivers Library and Media Center building includes a classroom, a 35-seat computer lab classroom, two meeting rooms, and a state-of-the-art TV studio. The library has 40 computers available for student use. There are also five study rooms, each with a computer and whiteboard, and a microfilm viewing room.

2022-23 FGC LIBRARY STATISTICS

Source: Florida Gateway College Library

Library Staff (FTE)	5.85
Physical Library Collection - books, media, serials	35,389
Digital Collection – eBooks, multimedia, serials	295,809
New Titles Added	762
General Circulation Transactions- print & digital	48,523
Library Orientation Video views	711
Physical Information Literacy Class Presentations	27
Students attending Information Literacy Class Presentations	455
Number of hours open per week Fall 2021 & Spring 2022	59
Patron entries/gate count	30,341
Library Skills Assessment Completions	880

SECTION 10. ATHLETICS

The mission of the Florida Gateway College Athletic Department is to provide student-athletes with the highest quality educational opportunities, resources, services and facilities needed to achieve academic and athletic excellence while adhering to both National Junior College Athletic Association (NJCAA) and Florida College System Activities Association (FCSAA) guidelines.

Source (Table 10.1 & 10.2): 2022 EADA Report, <https://fgcwolves.com/landing/index>

TABLE 10.1 SPORTS TEAMS AND PARTICIPATION (2022-2023)

Note: No students participated in more than one sport. 10/30/23

Sport	Men	Women
Basketball	13	-
Cross Country	-	6
Flag Football	-	12
ESports	9	-
Total Participants	22	18
Ratio (Percent)	55%	45%



TABLE 10.2 ATHLETICALLY RELATED STUDENT AID - ALL TEAMS

	Men	Women	Total
Amount of Aid	\$29,000	\$32,500	\$61,500
Ratio (Percent)	47%	53%	100%

SECTION 11. FINANCIAL AID

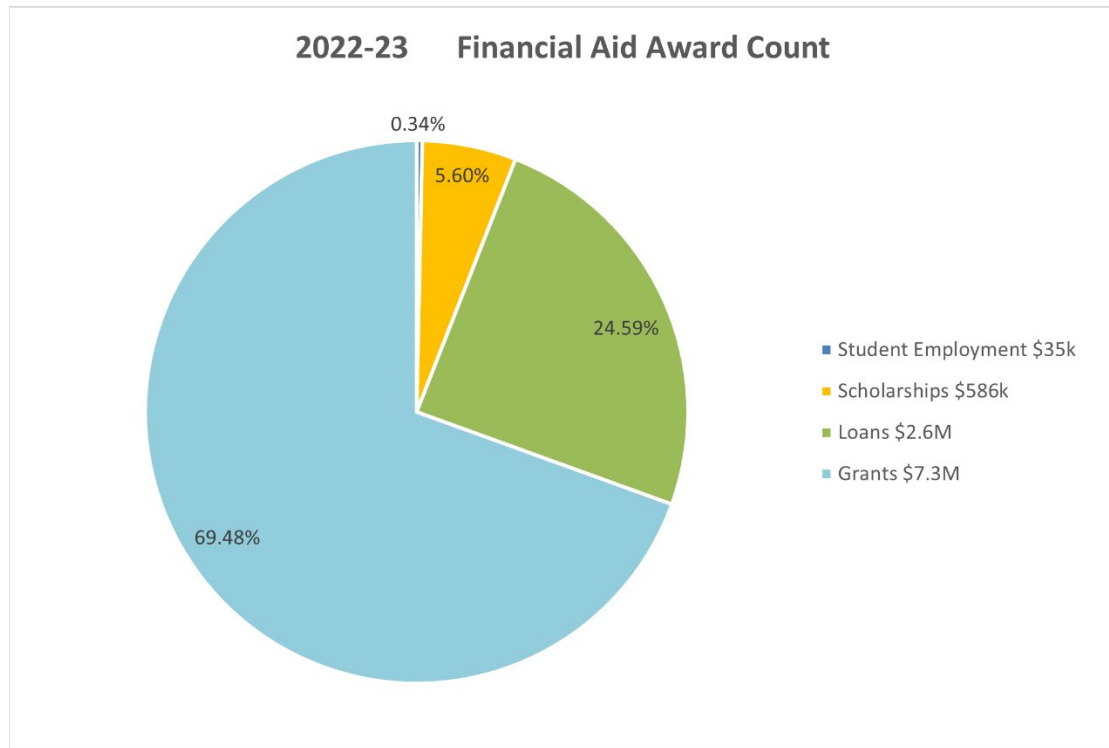
TABLE 11.1 ANNUAL FINANCIAL AID AWARDED AID COUNTS 2022-2023

AWARD TYPE	AWARD COUNT	HEADCOUNT	AMOUNT PAID
TOTAL GRANTS	4,233	2,500	\$7,271,799.49
101 - GRANTS-FEDERAL-PELL	2,606	1,391	\$5,529,380.78
102 - GRANTS-FEDERAL-SEOG	315	194	\$101,726.85
104 - GRANTS-FEDERAL-OTHER	26	20	\$28,000.00
105 - GRANTS-STATE-FPSAG	947	609	\$1,219,988.00
106 - GRANTS-OTHER-STATE SOURCES	77	76	\$29,038.50
107 - GRANTS-STATE-FPPCESAGP	124	92	\$174,682.00
113 - GRANTS-FEDERAL-TEACH	4	3	\$5,658.00
115 - GRANTS-STATE-OPEN DOOR GRANT	134	115	\$183,325.36
TOTAL LOANS	897	547	\$2,573,317.00
206 - FEDERAL-LOANS-FDLP	894	544	\$2,559,716.00
207 - FEDERAL-LOANS-FDLP PLUS	3	3	\$13,601.00
TOTAL SCHOLARSHIPS	605	389	\$585,915.57
302 - SCHOLARSHIPS-STATE-BRIGHT FUTURES-FAS	22	12	\$26,296.24
303 - SCHOLARSHIPS-STATE-BRIGHT FUTURES-FMS	97	53	\$107,154.62
304 - SCHOLARSHIPS-STATE-BRIGHT FUTURES-FGVS	26	15	\$13,746.00
305 - SCHOLARSHIPS-OTHER STATE	80	44	\$80,287.06
306 - SCHOLARSHIPS-INSTITUTIONAL	380	265	\$358,431.65
TOTAL STUDENT EMPLOYMENT	26	21	\$35,614.15
401 - FEDERAL STUD EMPLOYMENT WORK STUDY	26	21	\$35,614.15
COLLEGE TOTAL FINANCIAL AID	5,761	3,457	\$10,466,646.21

Source (Tables 11.1-11.3): State Report [Student Database] Financial Aid Awarded Aid Counts "Annual Financial Aid Awarded Aid Counts" pg. 1

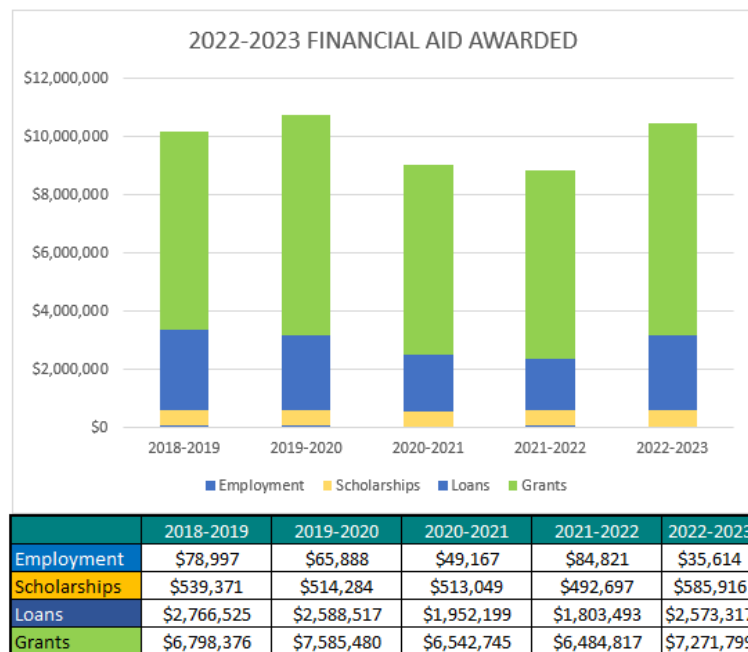


TABLE 11.2. AID AWARDS BY AWARD TYPE 2022-2023



Note: Monetary amounts in the pie chart above are rounded; 2nd Chance Pell Grant Est. \$5.5M

TABLE 11.3 ANNUAL FINANCIAL AID AWARDED – 5-YEAR TREND



SECTION 12. STUDENT FEES 2022-2023

Florida Resident

Non-Florida Resident

Credit Courses, Lower Division: Total per Credit Hour			
		<i>(online only - \$230.53 per credit hour)</i>	
Tuition	\$ 78.94	Resident Fee	\$ 78.94
Capital Improvement	\$ 7.89	Non-Resident Tuition	\$236.82
Financial Aid	\$ 5.53	Capital Improvement	\$ 31.58
Student Activities	\$ 6.25	Financial Aid	\$ 22.10
Technology	\$ 3.71	Student Activities	\$ 6.25
Access Fee	\$ 1.00	Technology	\$ 14.88
		Access Fee	\$ 1.00
Total per Credit Hour	\$103.32	Total per Credit Hour	\$391.57
Non-Credit Postsecondary Adult Vocational Courses (per semester hour equivalent)			
		<i>(online only - \$157.88 per credit hour)</i>	
Tuition	\$ 69.90	Resident Fee	\$ 69.90
Technology Fee	\$ 3.50	Non-Resident Tuition	\$209.70
Financial Aid	\$ 6.99	Technology Fee	\$ 13.98
Capital Improvement Fee	\$ 3.50	Financial Aid	\$ 27.96
Access Fee	\$ 1.00	Capital Improvement Fee	\$ 13.98
		Access Fee	\$ 1.00
Net Tuition per SHE	\$ 84.89	Net Tuition per SHE	\$336.52
Credit Courses, Upper Division, Baccalaureate: Total per Credit Hour			
		<i>(online only - \$264.44 per credit hour)</i>	
Tuition	\$ 91.79	Tuition	\$ 91.79
Capital Improvement	\$ 9.18	Out of State Fees	\$275.37
Financial Aid	\$ 4.59	Capital Improvement	\$ 36.72
Student Activities	\$ 9.18	Financial Aid	\$ 18.36
Technology	\$ 4.59	Student Activities	\$ 9.18
Access Fee	\$ 1.00	Technology	\$ 18.36
		Access Fee	\$ 1.00
Total per Credit Hour	\$120.33	Total per Credit Hour	\$450.78
All fees are listed per credit hour. Amount does not include lab fees or distance learning fees.			
<ul style="list-style-type: none"> • Lab fees are per course, not credit hour. • Distance learning fees are \$10.00 per credit hour. 			
Fees are subject to change.			

For latest tuition and fee schedules, visit <https://www.fgc.edu/students/fee-payment/>

SECTION 13. FOUNDATION FOR FLORIDA GATEWAY COLLEGE, INC.

The Foundation for Florida Gateway College is a private, not-for-profit organization that exists solely to provide financial support for Florida Gateway College and the students it serves. Funds are raised to provide student scholarships, purchase equipment and teaching resources, and to grant other needed support.

The Foundation for Florida Gateway College was founded in 1969 by a dedicated group of community volunteers who sought to raise private funds to support the College. Since inception, more than \$20,000,000 has been expended to support FGC and students.

The Foundation is governed by a volunteer Executive Board of Directors who use their time and talents to assist the college in fulfilling its mission. In addition to the Executive Board, community volunteers also serve on the following committees: Finance/Audit, Planned Gifts and Gift Acceptance/Property.

Gifts to the Foundation are tax deductible to the fullest extent allowed by law.

A variety of privately funded scholarships are available and are administered by the Florida Gateway College Office of Financial Aid. For more information contact the financial aid office at 386-754-4282.

For more information on investing in Florida Gateway College, please contact:

Lee Pinchouck

Executive Director

The Foundation for Florida Gateway College

386-754-4201

lee.pinchouck@fgc.edu



More information about the Foundation can be found on the web at: <https://www.fgc.edu/alumni/the-foundation/>

SECTION 14. AUDITED FINANCIALS

Source: 2022 Florida Auditor General Report https://flauditor.gov/pages/pdf_files/2022-151.pdf

FLORIDA GATEWAY COLLEGE A Component Unit of the State of Florida Statement of Revenues, Expenses, and Changes in Net Position For the Fiscal Year Ended June 30, 2022

	College	Component Unit
REVENUES		
Operating Revenues:		
Student Tuition and Fees, Net of Scholarship Allowances of \$2,105,325.11	\$ 3,500,249.70	\$ -
Federal Grants and Contracts	522,253.18	-
State and Local Grants and Contracts	79,142.50	-
Nongovernmental Grants and Contracts	197,945.03	-
Sales and Services of Educational Departments	132.00	-
Auxiliary Enterprises, Net of Scholarship Allowances of \$63,850.43	138,199.71	-
Other Operating Revenues	144,568.42	1,506,363.00
Total Operating Revenues	4,582,490.54	1,506,363.00
EXPENSES		
Operating Expenses:		
Personnel Services	16,329,814.75	-
Scholarships and Waivers	7,502,842.34	749,635.00
Utilities and Communications	750,170.11	-
Contractual Services	1,865,123.07	830,790.00
Other Services and Expenses	2,797,120.49	278,252.00
Materials and Supplies	1,468,878.58	-
Depreciation	1,473,312.06	11,961.00
Total Operating Expenses	32,187,261.40	1,870,638.00
Operating Loss	(27,604,770.86)	(364,275.00)
NONOPERATING REVENUES (EXPENSES)		
State Noncapital Appropriations	15,258,304.00	-
Federal and State Student Financial Aid	8,951,530.39	-
Gifts and Grants Received for Other Than Capital or Endowment Purposes	1,816,054.44	-
Investment Income	15,997.04	475,161.00
Net Gain on Investments	-	2,369,645.00
Other Nonoperating Revenues	144,052.16	-
Gain on Disposal of Capital Assets	123,886.71	-
Interest on Capital Asset-Related Debt	(237,237.31)	-
Other Nonoperating Expenses	-	(60,559.00)
Net Nonoperating Revenues	26,072,587.43	2,784,247.00
Income (Loss) Before Other Revenues	(1,532,183.43)	2,419,972.00
State Capital Appropriations	5,637,369.00	-
Capital Grants, Contracts, Gifts, and Fees	1,584,184.06	292,928.00
Total Other Revenues	7,221,553.06	292,928.00
Increase in Net Position	5,689,369.63	2,712,900.00
Net Position, Beginning of Year	34,670,099.18	23,077,444.00
Net Position, End of Year	\$ 40,359,468.81	\$ 25,790,344.00

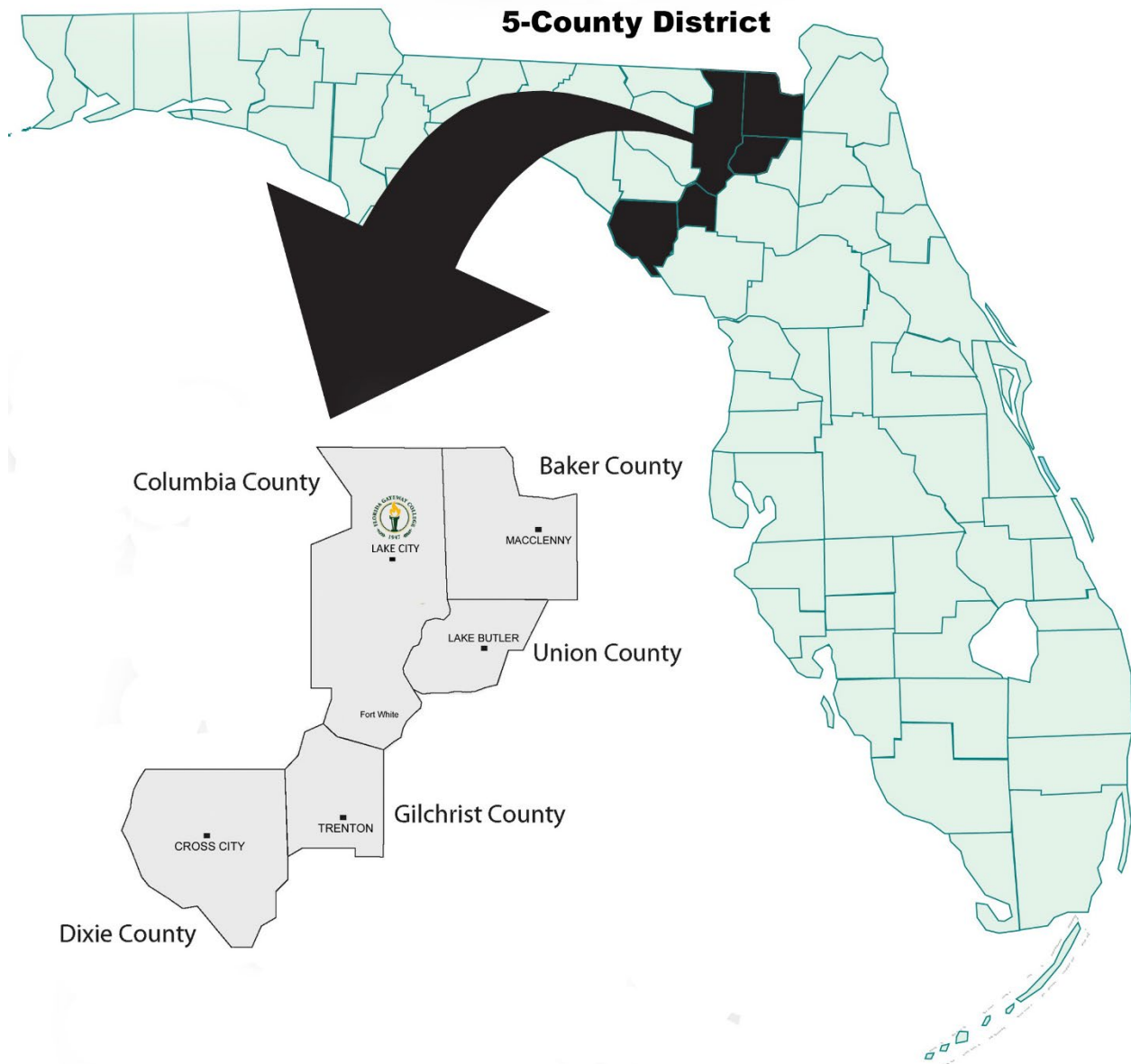
The accompanying notes to financial statements are an integral part of this statement.

Report No. 2023-096
January 2023



SECTION 15. FLORIDA GATEWAY COLLEGE SERVICE AREA

IMAGE 15.1 FGC 5-COUNTY DISTRICT



The Florida Gateway College service area consists of five counties (Baker, Columbia, Dixie, Gilchrist and Union) which stretch over a distance of more than 100 miles – from the southern Georgia border to the Gulf of Mexico—covering nearly 2,700 square miles.



TABLE 15.2 POPULATION ESTIMATES AND LAND AREA OF FGC SERVICE AREA - 2022

County	Population	Square Miles
Baker	27,881	585
Columbia	71,525	798
Dixie	16,988	705
Gilchrist	18,841	350
Union	15,550	244
Total 5-County District	150,785	2,682

Source: University of Florida College of Liberal Arts and Sciences Bureau of Economic and Business Research (BEBR)
Report *Florida Estimates of Population*, 2022

TABLE 15.3 SELECTED POPULATION AGE AND GENDER DEMOGRAPHICS - 2022

County	<18	65+	Median Age	Gender	
				Male	Female
Baker	23.5%	14.9%	37.7	53.6%	46.4%
Columbia	22.1%	19.65%	40.7	51.2%	48.8%
Dixie	17.8%	23.71%	45.8	55.7%	44.3%
Gilchrist	19.9%	20.08%	42.7	51.6%	48.4%
Union	21.5%	17%	39.7	64.8%	35.2%
Total 5-County District	21.58%	18.99%	-	53.64%	46.36%
<i>Florida</i>	19.6%	20.9%	42.4	49.2%	50.8%

Source: U.S. Census Bureau <https://data.census.gov/> Table DP05 (1/10/2024); 5-county district percentages are calculated; 5Year Report

TABLE 15.4 POPULATION BY RACE/ETHNICITY - 2022

County	White	Black	Asian	Other Race	Multi-Racial	Hispanic (any Race)
Baker	78.6%	11.9%	.7%	.9%	8%	3.2%
Columbia	73.7%	16.8%	.9%	2.4%	5.9%	6.8%
Dixie	85.2%	8.2%	.3%	.9%	5.4%	4.5%
Gilchrist	90.7%	3.2%	.3%	1.6%	4.2%	6.2%
Union	73.5%	16.7%	.1%	1.1%	8.6%	5.7%
Total 5-County District	77.9%	13.25%	.66%	1.79%	6.31%	5.66%
<i>Florida</i>	63.8%	15.5%	2.8%	5.2%	12.7%	26.5%

Source: U.S. Census Bureau <https://data.census.gov/> Table DP05 (1/10/2024); 5-county district percentages are calculated and may not add up to 100% due to rounding.

TABLE 15.5 EDUCATION ATTAINMENT LEVELS OF POPULATION 25 YEARS AND OLDER - 2022

	Baker	Columbia	Dixie	Gilchrist	Union	Florida
Less than HS Diploma	15%	14.2%	19.3%	14%	22.1%	10.8%
HS Diploma/Equiv.	42.4%	36.1%	48.3%	39.1%	39.2%	27.7%
Some College/No Degree	20.4%	24.1%	17.4%	21.8%	19.2%	19.2%
Associate's Degree	8.2%	9.6%	7.1%	10.5%	9.5%	10.1%
Bachelor's Degree	8.5%	10.9%	5.3%	10%	6.1%	20.2%
Graduate/Prof. Degree	5.6%	5.1%	2.7%	4.7%	3.9%	12.1%

Source: U.S. Census Bureau <http://data.census.gov/> S1501 – Educational Attainment, American Community Survey 5-Year Estimates (1/8/2024)

Note: How to use <http://data.census.gov/> can be found at this link, <https://www.census.gov/data/what-is-data-census-gov/guidance-for-data-users/how-to-materials-for-using-data-census-gov.html>



GLOSSARY OF TERMS

Definitions are taken from the Glossary of the Florida College System Fact Book or current Florida Statutes.

➤ **Academic Year (AY)**

Statistics in this Fact Book follow the Florida Department of Education definition of the academic year—beginning with the Summer term and ending with the Spring term. (e.g. AY 2019-20 would be Summer 2019, Fall 2019, and Spring 2020.)

➤ **Accountability**

A process whereby data-based measures are used to provide information on institutional performance.

➤ **Advanced and Professional (A&P)**

A program area with courses designed to provide the first two years of course work leading to an advanced or professional degree, including general education and specialized lower division courses to complete a transfer degree. It does not include college preparatory or non-college credit courses.

➤ **Associate in Arts Degree (AA)**

Two-year degree program designed to transfer to a four-year institution. Florida has a statewide articulation agreement between the Florida College System and the State University System.

➤ **Associate in Science Degree (AS)**

Programs of instruction consisting of college-level courses to prepare students for entry into employment. Two-year technical degree that contains 15-18 credit hours of transferable general education.

➤ **Associate in Applied Science Degree (AAS)**

Programs of instruction consisting of college-level courses designed to prepare students for employment in a technical occupation. Generally, this is a two-year technical degree for students who do not want to pursue education beyond an associate's level.

➤ **Applied Technology Diploma (ATD)**

Courses that are part of an A.S. or A.A.S. degree and lead to employment in a specific occupation. An A.T.D. may consist of either vocational or college credit.

➤ **Bachelor of Science Degree (BS)**

A four-year degree typically involving a technical or workforce related field of study.

➤ **Bachelor of Applied Science Degree (BAS)**

A four-year degree designed to accommodate the unique demands for entry and advancement within specific workforce sectors.

➤ **Bachelor of Science Degree in Nursing (BSN)**

A four-year degree in Nursing.

➤ **Career Certificate**

A Career Certificate program consists of a series of vocational courses that prepare students for entry level employment in specific career fields. Programs can vary greatly in length.

➤ **College Credit**

The type of credit assigned to courses or course-equivalent learning that is part of an organized and specified college degree or college credit certificate program.

➤ **College Credit Certificate**

Short-term career education program which is part of an AS degree.

➤ **College Preparatory Instruction (CP or College Prep)**

See *Developmental Education*.

➤ **Community College and Technical Center Management Information Systems (CCTCMIS)**

Bureau within the FLDOE which maintains data collection systems for the Florida College System, serving 28 college campuses.

➤ **Completer**

A student who finishes a planned sequence of courses or competencies designed to meet an academic or vocational occupational objective and has met all of the requirements of the institution for program completion.

➤ **Continuing Workforce Education (CWE)**

The classification of instruction designed to improve job skills of employed persons. It may be tailored to a given employer and job (customized) or it may have broader applicability. CWE programs are not funded in 2014-15.

➤ **Course Success Rate**

Percentage of students achieving a “C” or better in a course.

➤ **Developmental Education (DevEd)**

Instruction through which a high school graduate who applies for any college credit program may attain the communication and computation skills necessary to successfully complete college credit instruction.

➤ **Dual Enrollment (DE)**

Enrollment of an eligible secondary student or home education student in a postsecondary course creditable toward high school completion and a career certificate or an associate or baccalaureate degree. *Note: By IPEDS definition, dual enrollment students are not considered degree-seeking.*

➤ **Educator Preparation Institute (EPI)**

Instructional institute located at self-selected postsecondary institutions, including community colleges, upon approval by the Department of Education in order to provide any or all of the following instruction: professional development for teachers for classroom improvement and for recertification purposes, training for substitute teachers, paraprofessional instruction, and competency-based instruction for baccalaureate degree holders leading to professional teacher certification. Educator Preparation Institutes provide an alternate route to teacher certification for mid-career professionals and college graduates who were not education majors.

➤ **First Time in College (FTIC)**

A student attending a college for the first time who has no credit toward a degree or formal award from any other institution who is enrolled in a course in an instructional area leading to a degree or certificate.

➤ **Florida Education and Training Placement Information Program (FETPIP)**

Provides placement information about graduates.

➤ **Full-Time Student (FT)**

Any student enrolled for 12 semester credits during the fall or spring terms, or 24 or more contact hours/week for clock hour programs.

➤ **Full-Time Equivalent (FTE) Enrollment**

Student semester hours divided by 30 for advanced and professional, postsecondary vocational instruction, and developmental education. For all other instruction, instructional clock hours divided by 900 hours.

➤ **Graduation Rate**

Graduation rates measure the percentage of first-time, full-time undergraduate students who complete their program at the same institution within a specified period of time. FGC typically uses 150% of normal time to completion when calculating graduation rates.

➤ **Integrated Postsecondary Education Data System (IPEDS)**

A Federal Education data system.

➤ **Lower Division**

College attendees at the freshman and sophomore level.

➤ **Non-degree Seeking Student**

A student enrolled in courses for credit who has not declared that he/she is seeking a degree or formal award.

➤ **Nonresident**

A student who is not a Florida resident and must pay the full tuition fees.

➤ **Occupational Credit**

The type of credit assigned to courses or course equivalent learning that is part of an organized and specified career certificate program.

➤ **Part-Time Student (PT)**

A student who is enrolled in less than 12 semester credits during the fall or spring terms, or less than 24 contact hours/week for clock hour programs.

➤ **PK-20 Education Reporting and Accessibility (PERA)**

Bureau within the Accountability, Reporting, and Measurement (ARM) Division of the Florida Department of Education.

➤ **Postsecondary Adult Vocational (PSAV)**

Job preparatory programs, excluding CWE, through which a student receives a vocational certificate (PSAVC) upon completion of instruction.

➤ **Postsecondary Vocational Certificate (PSV or PSVC)**

College credit job preparatory programs, through which a student receives an AS or AAS degree, college credit certificate (PSVC), or Applied Technology Diploma (ATD) upon completion of instruction.

➤ **Resident for Tuition Purposes**

A student who is a Florida resident and has maintained that residency for at least one year, and therefore not responsible for the payment of nonresident tuition fees.

➤ **Retention Rate**

The retention rate is the percentage of full-time first-time degree/certificate-seeking students from the previous fall who either re-enrolled or successfully completed their program by the current fall. *Note: IPEDS does not report our retention rate due to the “2+2” nature of Florida Colleges. FGC derives an IPEDS retention rate noted in this Fact Book from a special report produced by the FLDOE (PERA) group. Program retention rates are from FLDOE accountability reports.*

➤ **Unduplicated Headcount**

A count of the number of students enrolled in a specific period (i.e., semester, academic year) with each individual student counted once. Enrollment figures for a single term are unduplicated unless otherwise noted (as in the case of program enrollments—students may be enrolled in multiple programs in a single term).

➤ **Upper-Division**

College attendees at the junior and senior level.

➤ **Vocational Credit** See *Occupational Credit*.