

# Fact Book

## 2022



Prepared by:  
Department of Institutional Effectiveness  
January 2023

## TABLE OF CONTENTS

Table of Contents.....	1
Quick Facts .....	4
Overview .....	5
History.....	5
UPDATES – 2022 .....	5
Accreditation .....	6
Mission.....	6
Executive Council.....	6
Board of Trustees .....	6
Florida Gateway College Organizational Charts .....	7
2017-2022 Strategic Plan .....	10
Student Headcounts and Demographics .....	12
Fall Headcount – 5-Year Trend (2018 – 2022) .....	12
Fall 2022 Headcount by Status and Gender.....	12
Fall 2022 Headcount by Status and Age Range.....	12
Fall 2022 Headcount by Status and Race/Ethnicity .....	12
Fall 2022 Enrollment by County of Residence .....	12
Fall 2022 Enrollment by Student Type .....	13
Full-Time / Part-Time Headcount by Term - 5 Year Trend.....	13
Fall Headcount by Race/Ethnicity - 5 Year Trend.....	13
Entering Class & Unduplicated Headcount.....	14
Fall 2022 Entering Class Characteristics .....	14
Unduplicated Headcount - 5 Year Trend.....	14
Full-Time Equivalent (FTE) Enrollment .....	15
2021-2022 FTE by Term by Program Area .....	15
FTE - 5 Year Trend.. .....	15
FTE - 5 Year Trend by Program Area .....	15
Instruction.....	16
Fall 2022 Average Class Size by Discipline .....	16
Class Size - 5 Year Trend.....	16
Fall 2022 College Credit Course Enrollment by Method of Delivery .....	16
Fall 2022 College Credit Course Success by Instructional Method.....	17

Fall Course Total Enrollment Percent by Method of Delivery - 5 Year Trend.....	17
Programs .....	18
Program Offerings at Florida Gateway College.....	18
Associate in Arts .....	20
Headcount Enrollment – 2021-2022.....	20
Associate in Arts Declared Majors: - 5-Year Trend .....	20
Fall 2022 Associate in Arts Enrollment by Area of Study.....	20
Aggregated Course Success Rates for Selected Core Courses 2018-2022.....	20
Retention Rates 5-Year Trend - Associate in Arts .....	21
Success Rates 5-Year Trend - Associate in Arts.....	21
Associate in Arts Graduates- 5 Year Trend .....	21
Continuing Education Rates for A.A. Completers - 5 Year Trend.....	21
Associate in Science / Associate in Applied Science.....	22
A.S. / A.A.S. Declared Majors – 5-Year Trend .....	22
Retention Rate - Associate in Science/Associate in Applied Science.....	22
Success Rate - Associate in Science/Associate in Applied Science .....	22
Associate in Science/ Associate in Applied Science Graduates - 5 Year Trend.....	23
Continuing Education Rates for A.S. Completers - 5 Year Trend .....	23
Placement of 2019-20 A.S. / A.A.S. Completers.....	23
Average Salaries for 2019-20 A.S. Graduates .....	23
Postsecondary Vocational (College Credit) Certificates.....	24
College Credit Certificate/Applied Technology Diploma Declared Majors – 5-Year Trend.....	24
Retention Rates College Credit / ATD Certificates.....	25
College Credit Certificate / ATD Certificate Graduates – 5 Year Trend .....	25
Placement of 2019-2020 College Credit Certificate (PSVC) Completers .....	25
Average Salaries for 2019-20 Graduates .....	25
Postsecondary Adult Vocational Certificates .....	26
Occupational Certificate Declared Majors – 5-Year Trend .....	26
Placement of 2019-20 Postsecondary Adult Vocational Certificate Completers .....	26
Average Salaries for 2019-20 Graduates .....	27
Baccalaureate Degree Programs .....	28
Baccalaureate Programs Enrollment – 5-Year Trend.....	28
Baccalaureate Retention- 5 Year Trend .....	28
Baccalaureate Graduates - 5 Year Trend .....	29

Placement of 2019-20 Baccalaureate Degree Completers .....	29
Educator Preparation Institute (EPI) Certificate Program .....	29
EPI Graduates - 5 Year Trend .....	29
IPEDS Retention, Graduation & Transfer-Out Rates .....	30
Fall-to-Fall Overall Retention Rates .....	30
Graduation and Transfer Rates .....	30
Faculty and Staff .....	31
Faculty (Full-Time/Part-Time) .....	31
Fall 2022 Full-Time Employee Headcounts & Percent by Gender by Occupational Activity .....	32
Campus Facilities .....	33
Florida Gateway College Site Inventory - 2020 .....	33
Main Campus Map .....	33
Campus Facilities Available for Lease .....	35
Wilson S. Rivers Library and Media Center .....	36
2021-22 FGC Library Statistics .....	36
Athletics .....	37
Sports Teams and Participation (2021-22) .....	37
Athletically Related Student Aid - All Teams .....	37
Financial Aid .....	38
Annual Financial Aid Awarded Aid Counts .....	38
Annual Financial Aid Awards by Award Type - 2021-2022 .....	38
Annual Financial Aid Awarded - 5 Year Trend .....	39
Student Fees .....	40
Foundation for Florida Gateway College, Inc. ....	41
Audited Financials .....	42
Florida Gateway College Service Area .....	43
Population Estimates and Land Area of FGC Service Area - 2019 .....	44
Selected Population Age and Gender Demographics - 2019 .....	44
Population by Race/Ethnicity - 2019 .....	44
Education Attainment Levels of Population 25 Years and Older - 2019 .....	44
Glossary of Terms .....	45

## QUICK FACTS

---

### HEADCOUNT – FALL 2022

---

Full-Time	960	(35%)
Part-Time	1,804	(65%)
Total	2,764	

*Details on Page 12*

### 2021-2022 UNDUPLICATED HEADCOUNT

---

4,167<sup>1</sup>

*Details on Page 14*

### PERCENT ENTERING CLASS FULL-TIME FIRST TIME IN COLLEGE – FALL 2022

---

44%

*Details on Page 14*

### 2021-2022 FTE

---

1,993

*Details on Page 15*

### FALL-TO-FALL RETENTION RATE<sup>2</sup> – 2021-22 → 2022-23

---

Full-time – 62%    Part-time – 49%    Overall – 57%

### GRADUATION RATE – 2021 (IPEDS 2015 COHORT)

---

64%

### 2021-2022 GRADUATES

---

970

### TUITION AND FEES – FLORIDA RESIDENT

---

Credit Courses, Lower Division: Total per credit hour.....	\$103.32
Postsecondary Adult Vocational Total per semester hour equivalent.....	\$84.89
Credit Courses, Upper Division, Baccalaureate: Total per credit hour.....	\$120.33

*Details on Page 40*

---

<sup>1</sup> Estimated from FGC APEX Enrollment reports 8/18/22

<sup>2</sup> As calculated by the Florida College System PERA division using “old” IPEDS methodology



## OVERVIEW

---

### **HISTORY**

Florida Gateway College traces its growth from 1947 when the Columbia Forestry School opened on a former World War II naval air station. In 1949, it became the State Forest Ranger School of the University of Florida and remained so for more than a decade. In 1961, the state of Florida created Lake City Junior College and Forest Ranger School, and the College became one of 28 two-year institutions envisioned in the state's master plan. In those early days, Lake City Junior College served fewer than 400 students. The college then became Lake City Community College in 1970, emphasizing the importance to support the region the college serves. The next evolution of the college occurred in 2010, when the College became eligible to offer baccalaureate degrees and was renamed Florida Gateway College.

Now a public college serving approximately 5,000 students annually, the College's district encompasses five North Central Florida counties: Baker, Columbia, Dixie, Gilchrist, and Union. This nearly 2,700 square mile district is twice the size of the state of Rhode Island. The College district is situated midway between the Atlantic Ocean and the Gulf of Mexico, and is predominantly rural. The region around the College is commonly referred to as "Florida's Crown" or the "Gateway to Florida."

Florida Gateway College offers baccalaureate and associate degrees, as well as opportunities in diverse occupational programs designed to strengthen the district's workforce. The College maintains its commitment to providing excellent postsecondary educational opportunities to North Central Florida while maintaining an "open-door" admission policy. New programs are added as needed to meet local industry and employer needs, and student support services are continually improved to meet the needs of the College's students.

### **UPDATES – 2022**

Florida Gateway College is celebrating its 75<sup>th</sup> Anniversary by hosting numerous special events during the 2022-23 year.

Florida Gateway College's Strategic Plan has entered its final year. As we review our progress and close out the 2017-2022 Strategic Plan, we will be engaging the campus and local community in the development of the next plan.

The college is excited about all the innovations and improvements that have been made at FGC over the past five years. Foremost among these accomplishments was the construction and dedication of our new state-of-the-art STEM building.

The Florida Gateway College Second Chance Pell Program welcomes its 3<sup>rd</sup> cohort with 60 students in 2022. The Program, a partnership between the College and the Florida Department of Corrections (FDC), offers Pell Grant eligibility to inmates selected and supervised by the FDC who are eligible for upcoming release within the next five years. Students in this cohort are enrolled in either the Associate in Arts (A.A.) or the Associate in Science (A.S.) Environmental Science degree program. The expectation of the program is that, upon release, these inmates will be better prepared to enter and contribute to the workforce, which will enable them to provide for themselves and their families.

## **ACCREDITATION**

Florida Gateway College is accredited by the Southern Association of Colleges and Schools Commission on Colleges (SACSCOC) to award baccalaureate and associate degrees. Questions about the accreditation of Florida Gateway College may be directed in writing to the Southern Association of Colleges and Schools Commission on Colleges at 1866 Southern Lane, Decatur, Georgia 30033-4097, by calling (404) 679-4500, or by using information available on SACSCOC's website ([www.sacscoc.org](http://www.sacscoc.org)).

## **MISSION**

The mission of Florida Gateway College is to provide superior instruction, nurture individual development, and enrich the diverse communities it serves through affordable, quality higher education programs and lifelong learning opportunities.

*Reaffirmed by the Board of Trustees on June 16, 2022.*

## **EXECUTIVE COUNCIL**

### **PRESIDENT**

Dr. Lawrence Barrett

### **VICE PRESIDENT FOR BUSINESS SERVICES**

Ms. L. Michelle Holloway

### **VICE PRESIDENT OF ACADEMIC AFFAIRS**

Dr. Paula L. Gavin

### **VICE PRESIDENT OF ENROLLMENT MANAGEMENT & STUDENT SERVICES**

Mr. Anthony Cardenas

### **DEAN OF ENROLLMENT & MARKETING**

Ms. Kacey Schrader

### **EXECUTIVE DIRECTOR OF HUMAN RESOURCES**

Ms. Cassandra Buckles

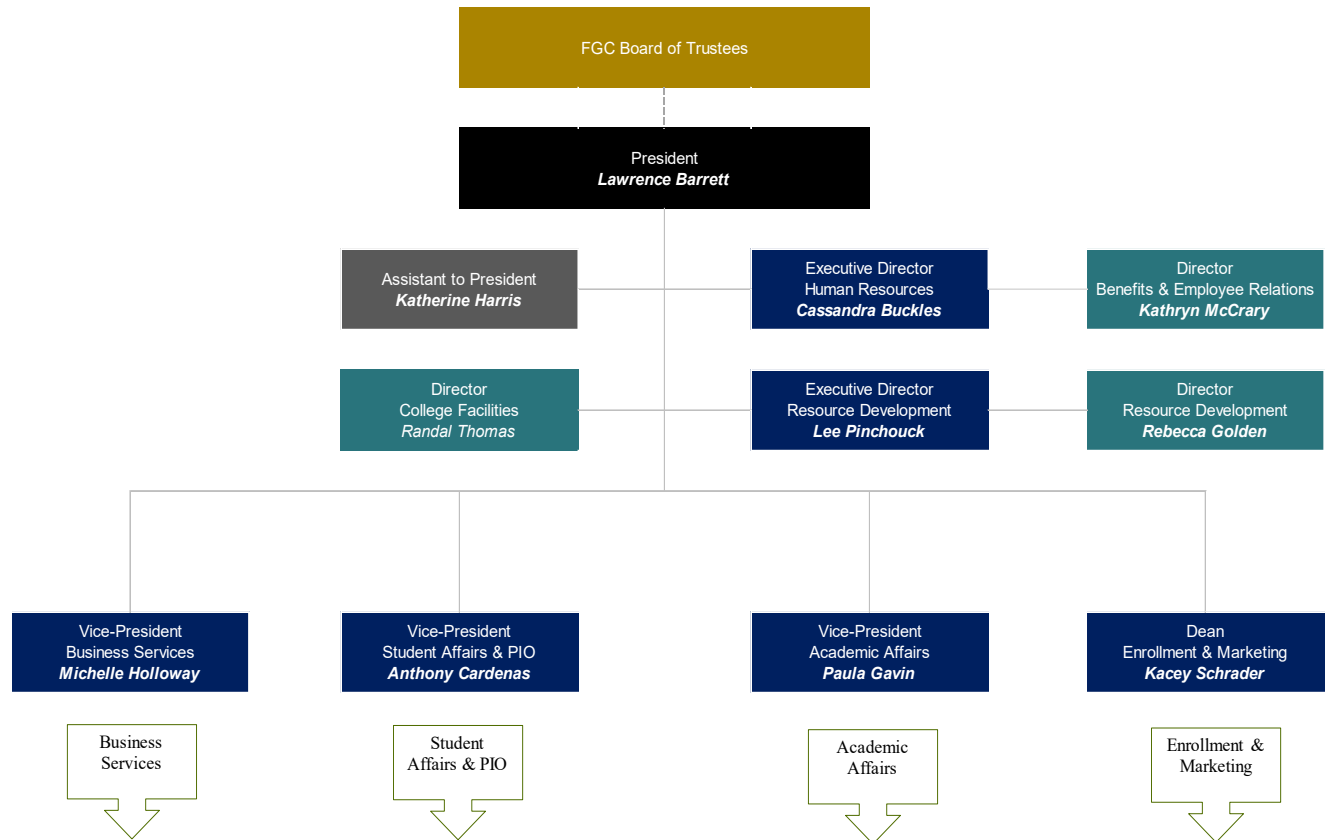
### **EXECUTIVE DIRECTOR OF RESOURCE DEVELOPMENT**

Mr. Lee Pinchouck

## **BOARD OF TRUSTEES**

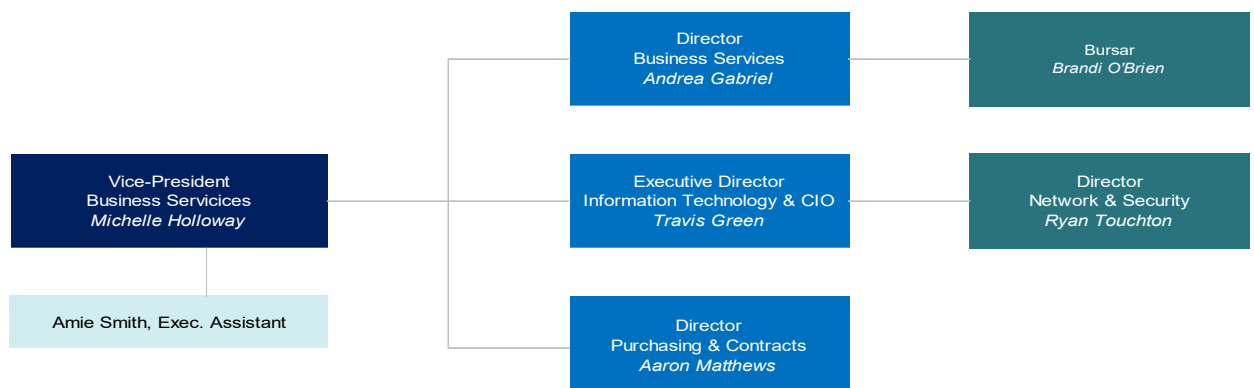
<b>Trustee</b>	<b>County</b>	<b>Serving on Board Since</b>
<b>Mr. J. David Crawford, Chair</b>	Baker	February 1, 2018
<b>Ms. Renae Allen, Vice-Chair</b>	Union	July 21, 2014
<b>Mr. Robert C. Brannan III</b>	Baker	July 1, 2003
<b>Mr. Lindsey Lander</b>	Gilchrist	September 1, 2013
<b>Ms. Kathryn L. McInnis</b>	Dixie	March 1, 1999
<b>Ms. Suzanne M. Norris</b>	Columbia	March 1, 1999
<b>Dr. James Surrency</b>	Gilchrist	April 20, 2018
<b>Dr. Miguel Tepedino</b>	Columbia	September 1, 2013

## FLORIDA GATEWAY COLLEGE ORGANIZATIONAL CHARTS



As of January 24, 2023

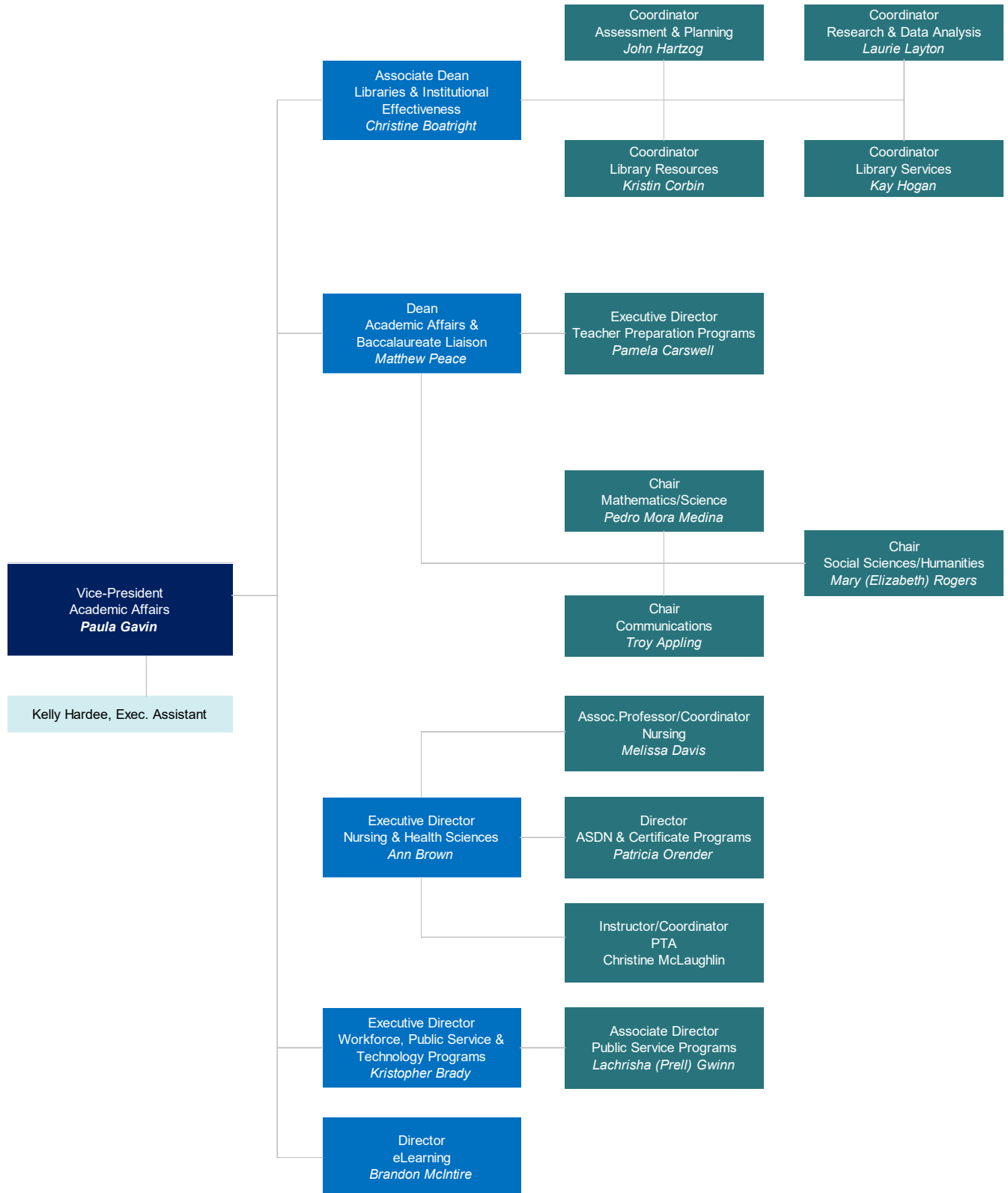
### BUSINESS SERVICES



As of: January 24, 2023



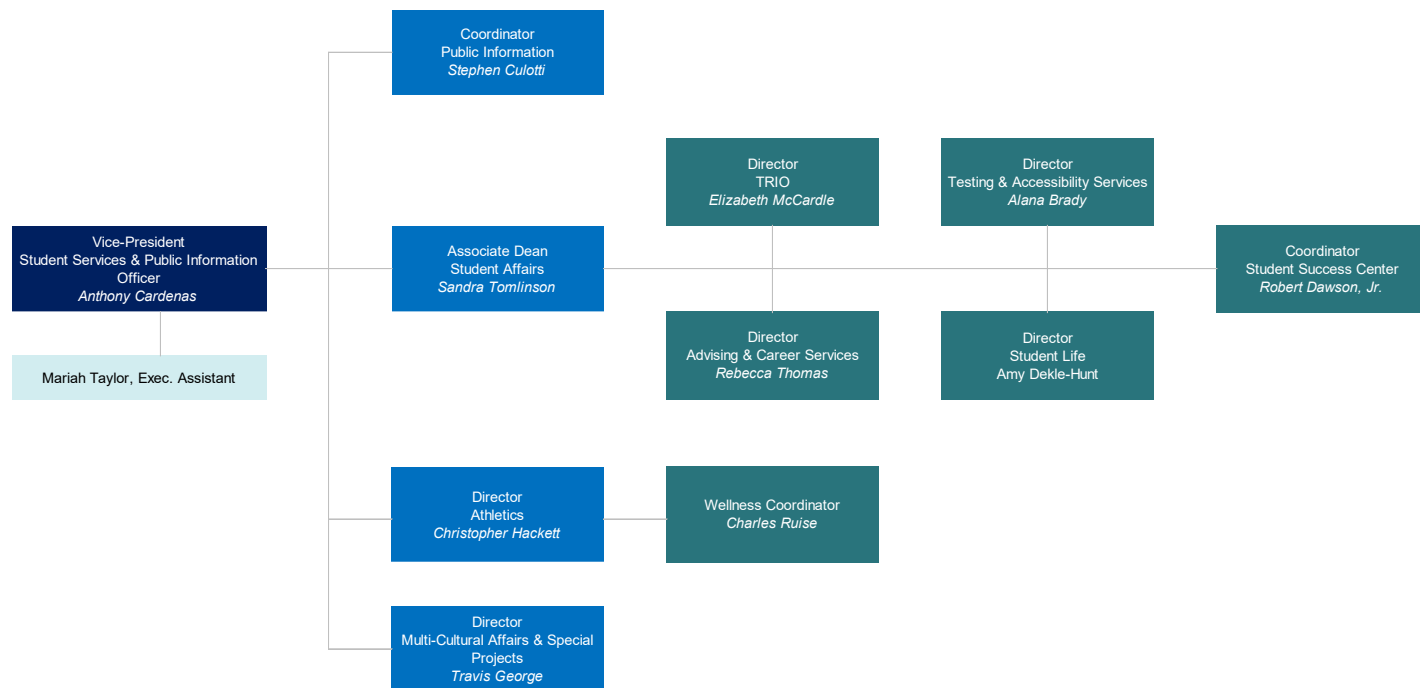
## ACADEMIC AFFAIRS



As of: January 24, 2023

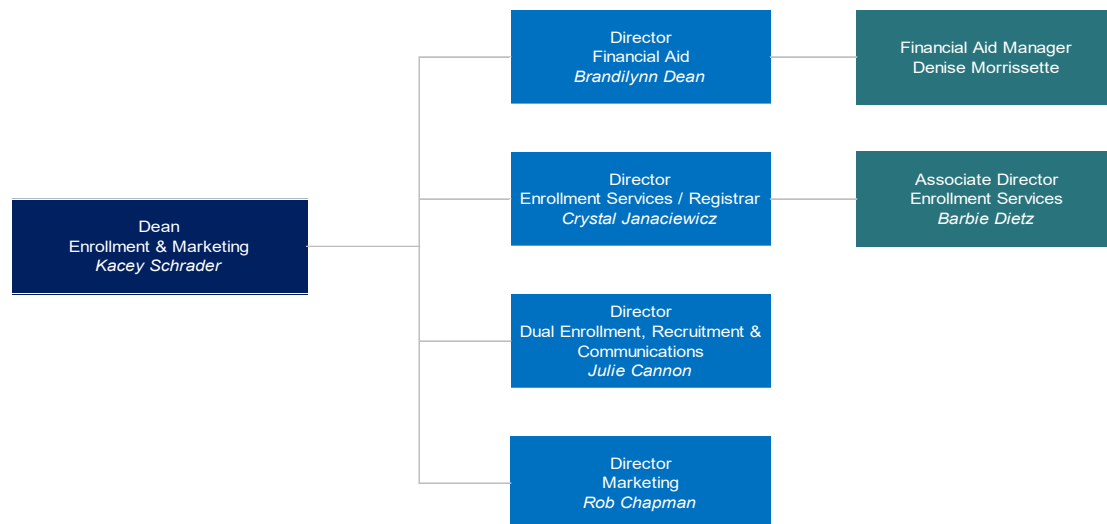


## STUDENT SERVICES/PUBLIC INFORMATION



As of: January 24, 2023

## ENROLLMENT SERVICES & MARKETING



As of: January 24, 2023

## 2017-2022 STRATEGIC PLAN

---

### *Serve, Enhance, and Grow*

#### GOAL 1: SUCCESS

---

Improve student persistence, retention, and learning through instructional excellence and exceptional support services.

Objectives:

1. Implement proactive advising strategies throughout all college units.
2. Use innovation, technology, and best practices in instruction to provide rigorous and engaging learning experiences.
3. Expand transfer pathways by increasing program articulation agreements with higher education institutions.
4. Establish a comprehensive Career Center that helps students align educational and career goals and promotes job exploration and planning to prepare them for success in their chosen career.

#### GOAL 2: ENGAGEMENT

---

Promote economic development and community enrichment through business partnerships, service, and engagement.

Objectives:

1. Engage students, faculty and staff in community service and service learning activities.
2. Provide client-focused, customized corporate training to enhance continuous employee growth and development.
3. Culturally and intellectually enrich the community through diverse entertainment and cultural activities.
4. Promote student engagement by providing opportunities to participate in student organizations, competitions, and campus life activities.

#### GOAL 3: ACADEMICS AND LIFELONG LEARNING

---

Foster a culture of cradle to grave learning through formal, non-formal and informal education offerings that provide the foundation for lifelong learning.

Objectives:

1. Offer learning experiences that inspire students to obtain knowledge outside of the educational system and the motivation to continue learning throughout their lifespan.
2. Provide a general education core that gives students a broad common foundation of knowledge, skills, and abilities to succeed within personal, social and career goals.
3. Provide instruction in a variety of delivery methods and flexible course schedules.

#### GOAL 4: ASSESSMENT, ACCOUNTABILITY, AND IMPROVEMENT

---

Ensure college vitality and enhance college services through a culture of accountability and continuous improvement.

Objectives:

1. Institutionalize a system for planning, budgeting, and assessment to ensure decisions are data driven and lead to improvement.
2. Promote fiscal stability and efficiency of college operations through effective allocation and use of resources.
3. Evaluate the viability and relevance of current programs and perform community and regional studies to find opportunities for new program development.



## GOAL 5: INSTITUTIONAL RESOURCE DEVELOPMENT

---

Ensure institutional resources are adequate to enhance student learning, instructional quality, and support educational programs.

Objectives:

1. Increase revenue by aligning resource development activities, cultivate new avenues of funding, and pursue opportunities to enhance existing resources.
2. Build and maintain accessible facilities, infrastructure, and grounds that functionally and aesthetically meet institutional needs.
3. Incorporate emerging technologies that enhance student learning, support faculty/staff productivity, and ensure organizational effectiveness.
4. Provide learning/information resources that are appropriate to support instruction and enhance program quality through foundation endowments.
5. Provide comprehensive professional development opportunities that improve teaching and learning, develop leadership, and strengthen employee skills.

## GOAL 6: ACCESS

---

Develop multiple pathways for equal and equitable access to the college's programs and services by reducing barriers to enrollment and progression and improve student academic achievement and goal attainment.

Objectives:

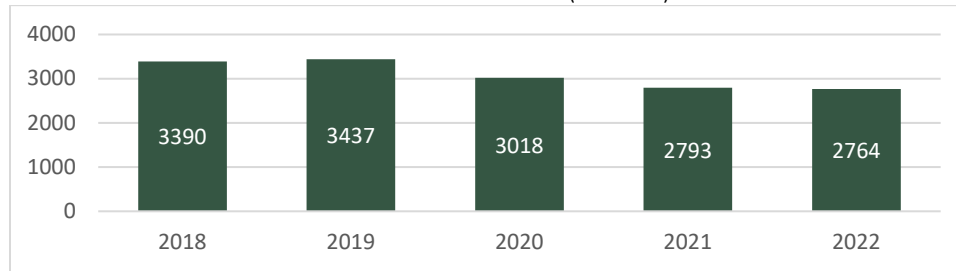
1. Develop and implement a Strategic Enrollment Management Plan that will increase enrollment.
2. Implement a marketing plan that will promote the activities of the college and increase awareness of the role it plays in the lives of the community.
3. Provide a college website and Information Technology Systems that is well organized and easy to use for seamless access to college enrollment and progression processes and information pertinent to students, faculty, staff, and community.
4. Establish an Access/Diversity Committee to review, assess and recommend potential additional opportunities to increase diversity in both our student body and for new faculty and staff.



# STUDENT HEADCOUNTS AND DEMOGRAPHICS

## Fall Headcount – 5-Year Trend (2018 – 2022)

Source: CCTCMIS - SDPETENS (ETENS RPT)



## Fall 2022 Headcount by Status and Gender

Source: CCTCMIS - SDPETENS (9/2/2022); State Reports – ETENS RPT

Status	Male	Female	Total
Full-Time	340	620	960
Part-Time	599	1,205	1,804
<b>Total</b>	<b>939</b>	<b>1,825</b>	<b>2,764</b>

## Fall 2022 Headcount by Status and Age Range

Source: CCTCMIS - ETENS RPT (9/2/2022)

Status	Under 18	18-24	25-34	35-64	65+	Total	Average Age
Full-Time	85	610	155	109	1	960	23.6
Part-Time	471	657	385	288	3	1,804	25.5
<b>Total</b>	<b>556</b>	<b>1,267</b>	<b>540</b>	<b>397</b>	<b>4</b>	<b>2,764</b>	<b>24.8</b>

## Fall 2022 Headcount by Status and Race/Ethnicity

Source: CCTCMIS – ETENS RPT Fall Beginning (9/2/2022)

Status	White	Black	Hispanic <sup>3</sup>	Asian	Other <sup>4</sup>	2 or More	Total	% Minority <sup>5</sup>
Full-Time	686	147	83	12	5	27	960	28.5%
Part-Time	1,325	284	126	23	13	33	1,804	26.6%
<b>Total</b>	<b>2,011</b>	<b>431</b>	<b>209</b>	<b>35</b>	<b>18</b>	<b>60</b>	<b>2,764</b>	<b>27.2%</b>

## Fall 2022 Enrollment by County of Residence

FGC District Counties:	68.9%	Selected Neighboring Counties:	17.3%
<i>Baker</i>	13.1%	<i>Suwannee</i>	8.4%
<i>Columbia</i>	41.0%	<i>Alachua</i>	5.1%
<i>Dixie</i>	4.8%	<i>Hamilton</i>	2.1%
<i>Gilchrist</i>	4.0%	<i>Bradford</i>	1.3%
<i>Union</i>	6.0%	<i>Levy</i>	0.4%
<b>All Other Counties/Unknown</b>	<b>12.8%</b>	<b>Out-of-State</b>	<b>1.0%</b>

Source: Banner Extract 12/14/2022; APEX Student Summary Report

<sup>3</sup> Hispanic may be of any race. Students identifying Ethnicity as Hispanic are not included in individual Race counts.

<sup>4</sup> **Other** category includes American Indian, Pacific Islander/Hawaiian, Nonresident Alien, and Unknown categories.

<sup>5</sup> Minority percentage includes all non-white population categories.

## Fall 2022 Enrollment by Student Type

Source FGC Student Database APEX Enrollment w/offset Report, extracted 12/14/22

Student Type	Percent of Total Enrollment
<b>Regular Student Type</b>	<b>76.8%</b>
Baccalaureate (includes "Intended" students)	2.0%
Continuing-Readmit	55.0%
Educator Prep-Teacher Cert	0.6%
New First Time In College	13.7%
Transfer	5.0%
Transient	0.5%
<b>Collegiate HS /Early College Student<sup>6</sup> Type</b>	<b>13.3%</b>
Collegiate HS-First Time in College	0.3%
Continuing-Readmit	12.0%
Early College FTIC	1.0%
Early College Continuing-Readmit	n/a
<b>Dual Enrollment Student Type</b>	<b>4.9%</b>
DE-First Time in College	3.9%
Continuing-Readmit	3.0%
<b>Continuing Education Non-Credit</b>	<b>2.6%</b>
<b>Adult Education GED Non-Credit</b>	<b>0.6%</b>
<b>Grand Total</b>	<b>100.0%</b>

## Full-Time / Part-Time Headcount by Term - 5 Year Trend 2017-18 through 2021-22

	Summer	Fall		Spring	
Year	Part-time	Full-time	Part-time	Full-time	Part-time
<b>2017-18</b>	1,953	992	2,300	919	2,410
<b>2018-19</b>	1,867	1,218	2,172	1,015	2,278
<b>*2019-20</b>	1,915	1,144	2,293	961	2,336
<b>2020-21</b>	1,905	1,019	2,000	901	2,033
<b>2021-22</b>	1,752	934	1,889	756	1,911

Source: CCTCMIS - State Reports – ETENSRT (2017 on); Note: Fall data is Beginning of Term ("Census"); Summer and Spring is End of Term. Year per our IPEDS submission year: Summer-Fall-Spring.

\*College shut down for in-person classes in March 2020 due to Covid-19 pandemic.

## Fall Headcount by Race/Ethnicity - 5 Year Trend 2017-18 through 2021-22

Source: CCTCMIS - State Reports – ETENSRT Fall Beginning

Fall Term	White	Black	Hispanic	Asian	Other/ Unknown	2 or More	Total
2017-18	2,521	420	194	42	55	60	<b>3,292</b>
2018-19	2,568	477	206	48	27	64	<b>3,390</b>
2019-20	2,577	496	229	49	26	60	<b>3,437</b>
2020-21	2,255	446	197	53	24	43	<b>3,018</b>
2021-22	2,044	443	204	35	17	50	<b>2,793</b>

<sup>6</sup> Early College was formerly called Collegiate High School. FGC Did not change the student type in Banner for past records, therefore both types appear in our Student Database reports.

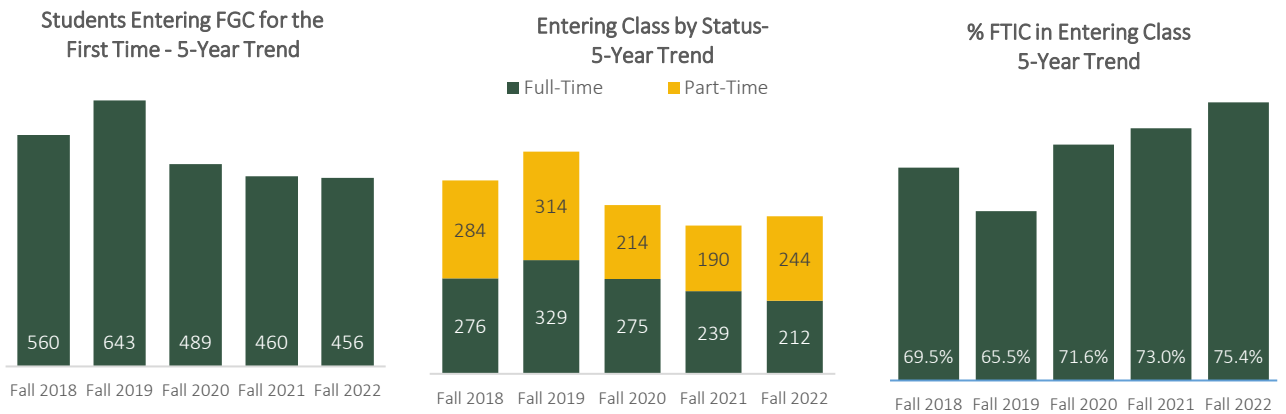


## ENTERING CLASS & UNDUPLICATED HEADCOUNT

### Fall 2022 Entering Class Characteristics

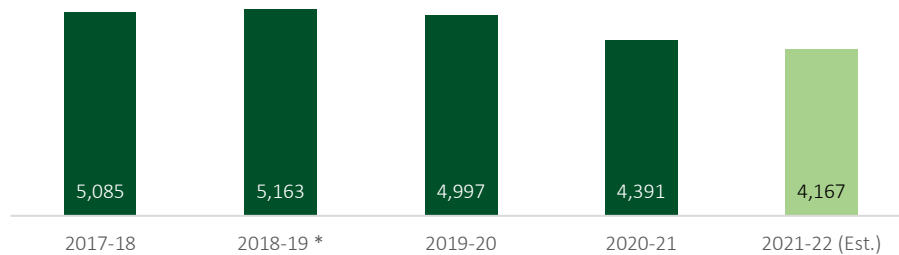
Source: CCTCMIS - SDPETENS (9/02/2022); State Reports – EFTENSRT; Note: Entering Class does not include former Duals

	Full-Time	Part-Time	Total
Degree/Cert Seeking First-Time	169	175	344
Degree/Cert Seeking Transfer-in	43	53	96
Non-Degree/Cert Seeking First-Time	0	16	16
<b>Total</b>	<b>212</b>	<b>244</b>	<b>456</b>
<i>% of Total Entering Class Represented by FTIC's</i>	75% (Total)		37% (Full-Time)



### Unduplicated Headcount - 5 Year Trend

Source: FCS Fact Books, Table 2.2T - All Students Enrolled in a Course  
2021-22 Estimate from Student Data Base 8/18/2022



\*2018-19 enrollment corrected to include only students enrolled in a course



## FULL-TIME EQUIVALENT (FTE) ENROLLMENT

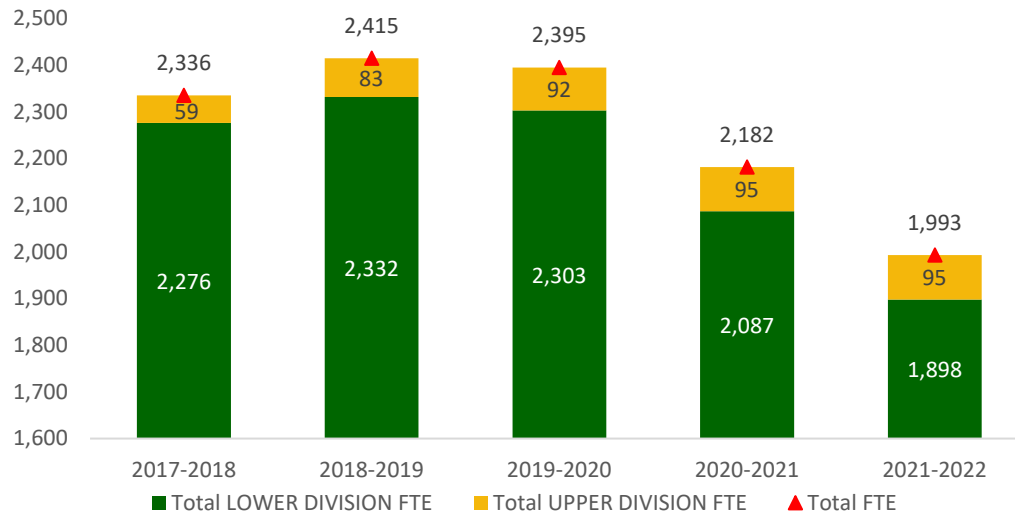
### 2021-2022 FTE by Term by Program Area

Source: Florida College System CCTCMIS – Spring Ending 2021-22 FTE-3 Enrollment Report – FTCOLFF, dated 6/9/2022

	Summer	Fall	Spring	Total
Advanced & Professional (A&P)	256.1	519.4	460.8	1,236.3
Postsecondary Vocational (PSV)	72.2	151.3	142.3	365.8
Postsecondary Adult Vocational (PSAV)	38.7	93.4	100.2	232.3
Educator Preparation Institute (EPI)	1.7	6.5	7.8	16.0
Developmental Education (DE)& Other	8.3	22.6	16.7	47.6
<b>Total LOWER DIVISION</b>	<b>377.0</b>	<b>793.2</b>	<b>727.8</b>	<b>1,898.0</b>
Upper Division (A&P)	12.0	42.9	40.3	95.2
<b>TOTAL College</b>	<b>389.0</b>	<b>836.1</b>	<b>768.1</b>	<b>1,993.2</b>

### FTE - 5 Year Trend..

Source: Florida College System CCTCMIS – Spring Ending FTE-3 Enrollment Reports – FTCOLFF



### FTE - 5 Year Trend by Program Area

Source: Florida College System CCTCMIS – Spring Ending FTE-3 Enrollment Reports – FTCOLFF

	2017-2018	2018-2019	2019-2020	2020-2021	2021-2022
Advanced & Professional (A&P)	1,457.7	1,469.3	1,484.7	1,340.3	1,236.3
Postsecondary Vocational (PSV)	457.6	520.3	475.7	398.5	365.8
Postsecondary Adult Vocational (PSAV)	283.3	272.1	269.9	298.5	232.3
Educator Preparation Institute (EPI)	18.0	12.2	13.5	13.8	16.0
Developmental Education (DE)& Other	59.6	58.2	59.4	36.4	47.6
<b>Total LOWER DIVISION</b>	<b>2,276.2</b>	<b>2,332.1</b>	<b>2,303.2</b>	<b>2,087.5</b>	<b>1,897.0</b>
Upper Division (A&P)	59.4	82.6	91.5	94.8	95.2
<b>TOTAL College</b>	<b>2,335.6</b>	<b>2,414.7</b>	<b>2,394.7</b>	<b>2,182.3</b>	<b>1,993.2</b>



# INSTRUCTION

## Fall 2022 Average Class Size by Discipline

Source: Florida Gateway College APEX Enrollment Report; retrieved 12/13/22

Discipline	Average Class Size
Advanced & Professional	16.0
Postsecondary Vocational	12.4
Postsecondary Adult Vocational	8.2
Developmental Education	10.4
All, Excluding CWE & AdultEd	13.4

## Class Size - 5 Year Trend

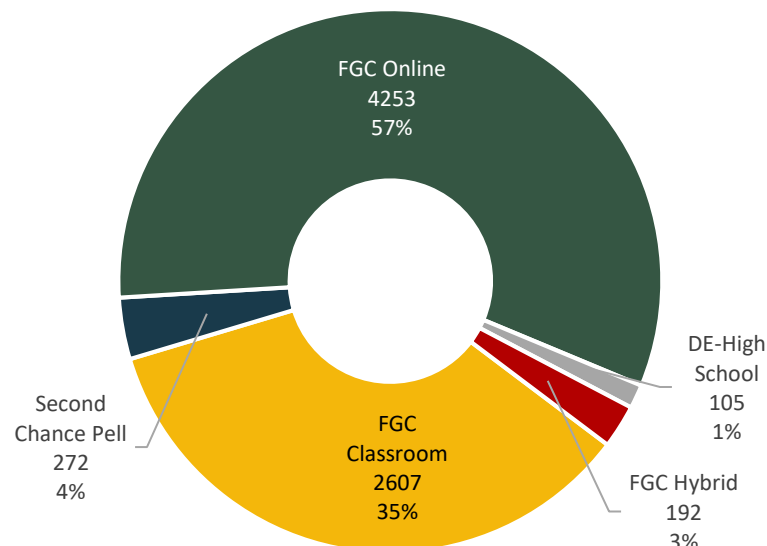
Source: Florida Gateway College APEX Enrollment Reports

	2017-18	2018-19	2019-20	2020-21	2021-22
Summer	13.0	12.5	14.4	14.4	11.2
Fall	15.6	15.4	13.8	13.8	12.8
Spring	14.7	13.1	13.8	12.5	12.1
Year (Summer, Fall, Spring)	14.7	13.9	13.9	13.4	12.2

Note: Excludes Continuing Workforce Education (CWE) courses

## Fall 2022 College Credit Course Enrollment by Method of Delivery

Source: Florida Gateway College APEX Enrollment Report (excludes PSAV and CWE); retrieved 12/13/22

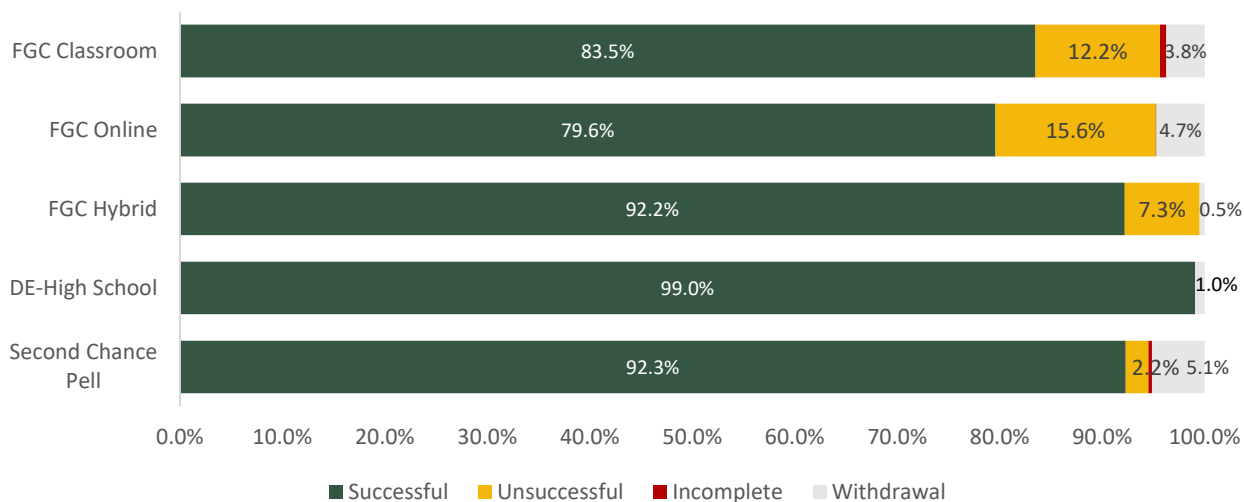


## Fall 2022 College Credit Course Success by Instructional Method

(excludes PSAV and CWE)

pop= course enrollments

Source Florida Gateway College APEX Enrollment Report



## Fall Course Total Enrollment Percent by Method of Delivery - 5 Year Trend

Source: Florida Gateway College APEX Enrollment Reports (excludes CWE, but includes PSAV)

	Fall 2018	Fall 2019	Fall 2020	Fall 2021	Fall 2022
Online	50.90%	48.70%	53.70%	49.64%	52.98%
Classroom	39.43%	40.58%	37.95%	39.68%	39.85%
Hybrid	4.82%	6.20%	5.48%	5.07%	2.55%
High School	4.85%	4.40%	2.82%	3.38%	1.27%
Ind. Study	0.00%	0.10%	0.05%	0.04%	0.04%
Second Chance Pell	-n/a-	-n/a-	-n/a-	2.19%	3.30%

Please note that the percentages in this table (which **includes** occupational credit courses) differ from the percentages for college credit enrollments noted in the previous Fall 2022 Course Enrollment and Success charts.



# PROGRAMS

## Program Offerings at Florida Gateway College

Federal CIP	Degree / Program
13.1210	Early Childhood Education, B.S.
13.1202	Elementary Education, B.S.
51.3801	Nursing, B.S.
03.0205	Water Resources Management, B.A.S
92.4010	Associate in Arts
01.0101	Agribusiness Management, A.S.
03.0104	Environmental Science Technology, A.S.
11.0103	Computer Information Technology, A.S.
11.0201	Computer Programming and Analysis, A.S.
11.0801	Digital Media And Design, A.S.
13.1210	Early Childhood Education, A.S.
43.0103	Criminal Justice Technology, A.S.
51.0707	Health Information Technology, A.S.
51.0806	Physical Therapist Assistant, A.S.
51.0904	Emergency Medical Services Technology, A.S.
51.3801	LPN to RN Bridge: Traditional Full-Time, A.S.
51.3801	LPN-RN Bridge Track: Fast-Track Part-Time, A.S.
51.3801	Registered Nursing , A.S.
52.0201	Business Administration, A.S.
15.0803	Automotive Service Management Technology, A.A.S.
01.0605	Advanced Certificate in Horticulture, C.C.C.
01.0605	Horticulture, C.C.C.
03.0104	Environmental Science Technician, C.C.C.
03.0104	Water Quality Technician, C.C.C.
09.0702	Video Production, C.C.C.
10.0105	Animation, C.C.C.
11.0201	Computer Office Specialist with Programming, C.C.C.
11.0202	Computer Support Specialist with Programming, C.C.C.
11.0803	Video Game Design, C.C.C.
11.1001	Network Infrastructure, C.C.C.
13.1210	Early Childhood Inclusion Specialization, C.C.C.
15.0803	Automotive Service Technology, Basic, C.C.C.
15.0803	Automotive Technology, C.C.C.
19.0709	Child Care Center Management, C.C.C.
19.0709	Child Development Early Intervention Specialization, C.C.C.
19.0709	Infants and Toddlers Specialization, C.C.C.
19.0709	Preschool Specialization, C.C.C.
43.0103	Criminal Justice Technology Specialist, C.C.C.
43.0103	Homeland Security Specialist, C.C.C.
50.0102	Multimedia Design, C.C.C.

Federal CIP	Degree / Program
51.0904	Emergency Medical Technician, C.C.C.
51.0904	Paramedic, C.C.C.
13.9999	Educator Preparation Institute, C.C.C.
52.0302	Accounting Technology Operations, C.C.C.
52.0302	Accounting Technology Specialist, C.C.C.
52.0302	Accounting Technology Management, C.C.C.
52.0701	Business Management, C.C.C.
51.0714	Medical Coder/Biller, A.T.D.
12.0401	Cosmetology, O.C.
12.0408	Facial Specialty, O.C.
12.0410	Nail Specialty, O.C.
43.0102	Correctional Basic Recruit, O.C.
43.0102	Law Enforcement to Corrections Basic Recruit, O.C.
43.0107	CMS Law Enforcement - Basic Recruit, O.C.
43.0107	Correctional Officer to Law Enforcement Basic Recruit, O.C.
43.0203	Fire Science Apparatus Operator, O.C.
43.0203	Firefighter I/II, O.C.
43.0203	Firefighter/EMT Combined, O.C.
15.0501	Commercial Heating and Air Conditioning Technology, O.C.
48.0508	Advanced Welding Technology, O.C.
48.0508	Welding Technology, O.C.
49.0205	Commercial Vehicle Driving, O.C.
51.1009	Phlebotomy, O.C.
51.3901	Practical Nursing, O.C.
51.3902	Nursing Assistant (Articulated), O.C. <i>[New Spring 2023]</i>





## **ASSOCIATE IN ARTS**

### **Headcount Enrollment – 2021-2022**

Source: FCS CCTCMIS AA1A Report dated 7/13/22

	Number	Percent of Total
Total	2,517	
Male	756	30.0%
Female	1,759	69.9%
Unknown <sup>7</sup>	2	0.1%
Dual Enrolled	753	30.0%

### **Associate in Arts Declared Majors: - 5-Year Trend**

Source: FCS CCTCMIS AA1A Reports

2017-18	2018-19	2019-20	2020-21	2021-22
2,947	3,077	3,048	2,702	2,517

### **Fall 2022 Associate in Arts Enrollment by Area of Study**

Source: FGC APEX Enrollment Summary w/offset report

Area of Study	Percent
AA-Arts, Hum, Comm, Design	1.4%
AA-Business	6.3%
AA-General Studies	46.3%
AA-Education	5.8%
AA-Health Sciences-Combined	30.7%
AA-Humanities-Relig Studies	0.0%
AA-Industrial, Manfg, Construct., Transportation	0.2%
AA-Public Safety-Crim Justice	0.9%
AA-STEM	3.6%
Undecided	4.7%

### **Aggregated Course Success Rates for Selected Core Courses 2018-2022**

Source: FGC Student Database APEX Report Grade-Analysis Summer 2018-Fall 2022

Course	Successful	Unsuccessful	Withdrawn
AMH2010	88.56%	9.15%	2.29%
AMH2020	84.71%	12.24%	3.05%
BSC2010C	83.35%	13.85%	2.80%
BSC2085	89.72%	7.90%	2.38%
BSC2085L	90.97%	6.59%	2.45%
CHM2045	86.69%	6.24%	7.07%
CHM2045L	93.35%	1.00%	5.65%
ENC1101	76.31%	20.35%	3.34%
ENC1102	83.08%	12.85%	4.07%
MAC1105	74.53%	16.21%	9.27%
MAT1033	62.02%	27.40%	10.57%
MGF1106	67.55%	24.15%	8.30%
PSY2012	85.97%	12.18%	1.85%
SPC2608	83.35%	11.28%	5.37%
STA2023	80.15%	11.92%	7.92%
Overall	80.32%	14.52%	5.16%

<sup>7</sup> Unknown gender or race is included in this count



### Retention Rates 5-Year Trend - Associate in Arts

Source: Florida College System M1P2 Accountability Reports

College	2017-18 Fall 2013 Cohort	2018-19 Fall 2014 Cohort	2019-20 Fall 2015 Cohort	2020-21 Fall 2016 Cohort	2021-22 Fall 2017 Cohort
<i>FCS System-Wide</i>	65.21	64.49	63.86	64.08	62.54
Florida Gateway College	51.72	61.37	65.04	67.42	61.07

### Success Rates 5-Year Trend - Associate in Arts

Source: Florida College System M1P2 Accountability Reports

College	2017-18 Fall 2013 Cohort	2018-19 Fall 2014 Cohort	2019-20 Fall 2015 Cohort	2020-21 Fall 2016 Cohort	2021-22 Fall 2017 Cohort
<i>FCS System-Wide</i>	85.54	85.99	85.52	85.53	84.63
Florida Gateway College	82.76	86.70	84.96	87.50	85.66

### Associate in Arts Graduates- 5 Year Trend

Source: CCTCMIS AA1A Reports

2017-18	2018-19	2019-20	2020-21	2021-22
371	382	378	366	308

### Continuing Education Rates for A.A. Completers - 5 Year Trend

Source: Florida Education & Training Placement Information Program (FETPIP)

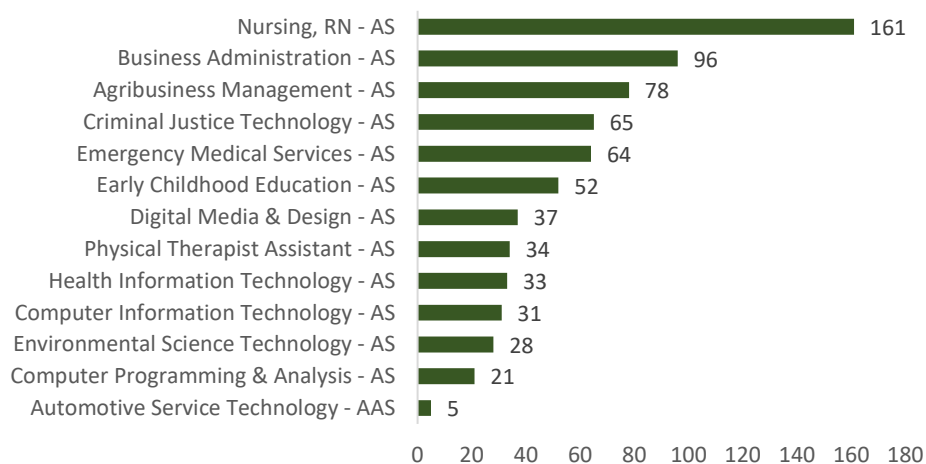
Note: Population is number of graduates reported for follow-up.

College	2018	2019	2020	2021	2022
	2016-17 Graduates	2017-18 Graduates	2018-19 Graduates	2019-20 Graduates	2020-21 Graduates
	FGC pop=346	FGC pop=370	FGC pop=382	FGC pop=378	FGC pop=366
<i>FCS System-Wide</i>	69%	69%	70%	68%	67%
Florida Gateway College	63%	67%	66%	64%	61%

## **ASSOCIATE IN SCIENCE / ASSOCIATE IN APPLIED SCIENCE**

### **Associate in Science / Associate in Applied Science 2021-2022 Headcount Enrollment**

Source: FCS CCTCMIS AA1A Report dated 6/9/22



### **A.S. / A.A.S. Declared Majors – 5-Year Trend**

Source: FCS CCTCMIS AA1A Reports (Note: Program titles align with State CIP titles)

Program	2017-18	2018-19	2019-20	2020-21	2021-22
Nursing, RN - AS	210	265	213	181	161
Business Administration - AS	57	87	97	96	96
Criminal Justice Technology - AS	42	78	88	76	65
Early Childhood Education - AS	90	85	104	71	52
Agribusiness Management - AS	-	-	70	66	78
Emergency Medical Services - AS	68	105	108	62	64
Physical Therapist Assistant - AS	45	46	44	40	34
Health Information Technology - AS	25	42	46	38	33
Digital Media & Design - AS	-	-	-	36	37
Environmental Science Technology - AS	83	71	41	33	28
Computer Information Technology - AS	20	31	37	26	31
Computer Programming & Analysis - AS	13	23	30	19	21
Automotive Service Technology - AAS	-	-	7	7	5

### **Retention Rate - Associate in Science/Associate in Applied Science**

Source: FCS Accountability M1P2 Reports

College	2017 Fall 2013 Cohort	2018 Fall 2014 Cohort	2019 Fall 2015 Cohort	2020 Fall 2016 Cohort	2021 Fall 2017 Cohort
<i>FCS System-Wide</i>	53.2	54.71	56.28	57.98	54.28
Florida Gateway College	59.62	58.49	66.67	80.33	69.64

### **Success Rate - Associate in Science/Associate in Applied Science**

Source: FCS Accountability M1P2 Reports

College	2017 Fall 2013 Cohort	2018 Fall 2014 Cohort	2019 Fall 2015 Cohort	2020 Fall 2016 Cohort	2021 Fall 2017 Cohort
<i>FCS System-Wide</i>	80.13	82.29	82.55	82.33	81.30
Florida Gateway College	80.77	86.79	93.33	88.52	83.93



### Associate in Science/ Associate in Applied Science Graduates - 5 Year Trend

Source: CCTCMIS AA1A Reports

2017-18	2018-19	2019-20	2020-21	2021-22
175	204	171	139	161

### Continuing Education Rates for A.S. Completers - 5 Year Trend

Source: Florida Education & Training Placement Information Program (FETPIP)

Note: Population is number of graduates reported for follow-up.

College	2017	2018	2019	2020	2021
	2015-16 Graduates	2016-17 Graduates	2017-18 Graduates	2018-19 Graduates	2019-20 Graduates
	FGC pop=154	FGC pop=161	FGC pop=175	FGC pop=203	FGC pop=170
<i>FCS System-Wide</i>	35%	35%	35%	37%	39%
Florida Gateway College	23%	29%	33%	26%	30%

### Placement of 2019-20 A.S. / A.A.S. Completers

Source: FCS FETPIP 2021 Follow-up Aggregated Outcome Data. For 2019-20 graduates.

Associate in Science/ Associate in Applied Science Degrees	Number of Graduates in Pool	Positive Placements	Placement %
Nursing RN	93	89	96%
Early Childhood Education	11	11	100%
<b>AGGREGATED TOTAL for All A.S./A.A.S. PROGRAMS</b>	<b>144</b>	<b>132</b>	<b>92%</b>

Notes: The "pool" includes completers with useable match data. Vocational program "positive placements" include completers found in jobs *in their field of study*, continuing with their education, or joining the armed forces upon graduation; **TOTALS include ALL Programs**. Very low enrollment programs (indicated by an asterisk) are not shown.

### Average Salaries for 2019-20 A.S. Graduates

Associate in Science (A.S.) Degree Programs	Average Annual Salary
Associate Degree Registered Nurse	\$64,228
Physical Therapist Assistant	\$35,908
<i>Earnings for other AS degree completers are not available individually. However, they are included in the average salary total for AS graduates.</i>	
<b>College Average for A.S. Programs</b> <i>(85% Found Employed; 92% Positive Placement Rate)</i>	<b>\$58,216</b>

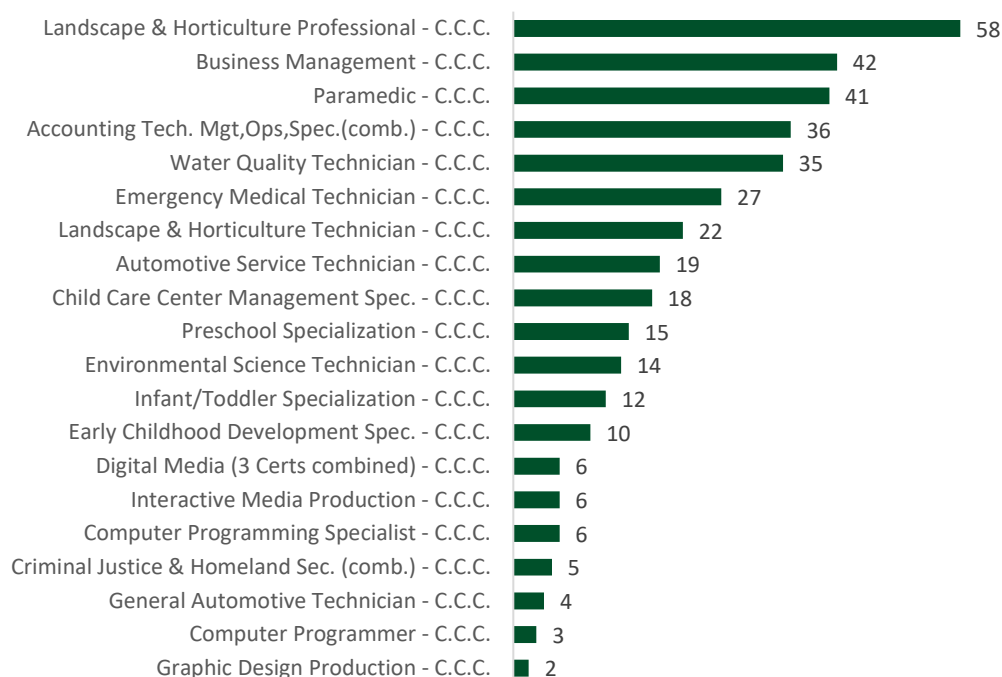
Source: 2019-2020 FETPIP Aggregated Outcome Data Reports from FLDOE; 2021 Follow-up. Note: Positive Placement Rate includes graduates who were found employed and students continuing education.



## **POSTSECONDARY VOCATIONAL (COLLEGE CREDIT) CERTIFICATES**

### **Postsecondary Vocational (College Credit) Certificates 2021-2022 Headcount Enrollment**

Source: FCS CCTCMIS AA1A Report dated 6/9/22



### **College Credit Certificate/Applied Technology Diploma Declared Majors – 5-Year Trend**

Source: FCS CCTCMIS AA1A Reports

Program	2017-18	2018-19	2019-20	2020-21	2021-22
Landscape & Horticulture Professional – C.C.C.	41	65	37	58	58
Business Management – C.C.C.	9	30	32	32	42
Paramedic – C.C.C.	39	64	70	44	41
Water Quality Technician – C.C.C.	24	24	19	15	35
Accounting Technology Management – C.C.C.	13	20	17	22	34
Emergency Medical Technician – C.C.C.	30	45	45	25	27
Landscape & Horticulture Technician – C.C.C.	41	34	34	22	22
Automotive Service Technician – C.C.C.	-	-	5	15	19
Child Care Center Management Spec. – C.C.C.	11	34	23	14	18
Preschool Specialization – C.C.C.	38	60	44	29	15
Environmental Science Technician – C.C.C.	-	-	17	17	14
Infant/Toddler Specialization – C.C.C.	2	7	3	3	12
Early Childhood Development Spec. – C.C.C.	0	8	11	9	10
Computer Programming Specialist – C.C.C.	4	11	6	7	6
Interactive Media Production – C.C.C.	9	11	18	6	6
General Automotive Technician – C.C.C.	-	-	4	7	4
Computer Programmer – C.C.C.	2	6	6	4	3
Graphic Design Production – C.C.C.	9	10	7	3	2
Medical Coder Biller ATD	41	50	47	45	38

### Retention Rates College Credit / ATD Certificates

Source: FCS M1P2 Accountability Reports

College	2017 Fall 2013 Cohort	2018 Fall 2014 Cohort	2019 Fall 2015 Cohort	2020 Fall 2016 Cohort	2021 Fall 2017 Cohort
<i>FCS System-Wide</i>	91.66	91.86	91.99	93.14	93.21
Florida Gateway College	80.00	77.78	77.78	100.00	90.00

### College Credit Certificate / ATD Certificate Graduates – 5 Year Trend

Source: CCTCMIS AA1A Reports

2017-18	2018-19	2019-20	2020-21	2021-22
135 / 3	163 / 5	200 / 2	120 / 10	164 / 8

### Placement of 2019-2020 College Credit Certificate (PSVC) Completers

Source: FCS FETPIP 2021 Follow-up Aggregated Outcome Data. For 2019-20 graduates.

College Credit Certificates (Postsecondary Vocational)	Number of Graduates in Pool	Positive Placements	Placement %
Landscape & Horticulture Professional/Technician	22	18	83%
Emergency Medical Technician – Basic	17	11	65%
Paramedic	25	15	60%
Child Care Center Management/Preschool Specialization	34	32	94%
Environmental Science Technician	40	20	50%
<b>TOTAL PSVC PROGRAMS</b>	<b>160</b>	<b>113</b>	<b>71%</b>

Notes: The “pool” includes completers with useable match data. Vocational program “positive placements” include completers found in jobs *in their field of study*, continuing with their education, or joining the armed forces upon graduation; **TOTALS include ALL Programs**. Some discontinued or very low enrollment programs (indicated by an asterisk) are not shown.

### Average Salaries for 2019-20 Graduates

College Credit Certificate (Postsecondary Vocational) Programs	
Child Care Center Management Specialization	\$27,576
Paramedic	\$55,592
Emergency Medical Technician (EMT)	\$47,464
Landscape & Horticulture Professional	\$56,648
Preschool Specialization	\$31,264
Environmental Science Technician	\$56,832
<i>Earnings for PSV certificate completers in other programs are not available individually. However, they are included in the average salary total and completion rate for PSV completers.</i>	
<b>College Average for PSVC Vocational Programs (71% Placement Rate)</b>	<b>\$48,584</b>

Source: 2019-2020 FETPIP Aggregated Outcome Data Reports from FLDOE; 2021 Follow-up.

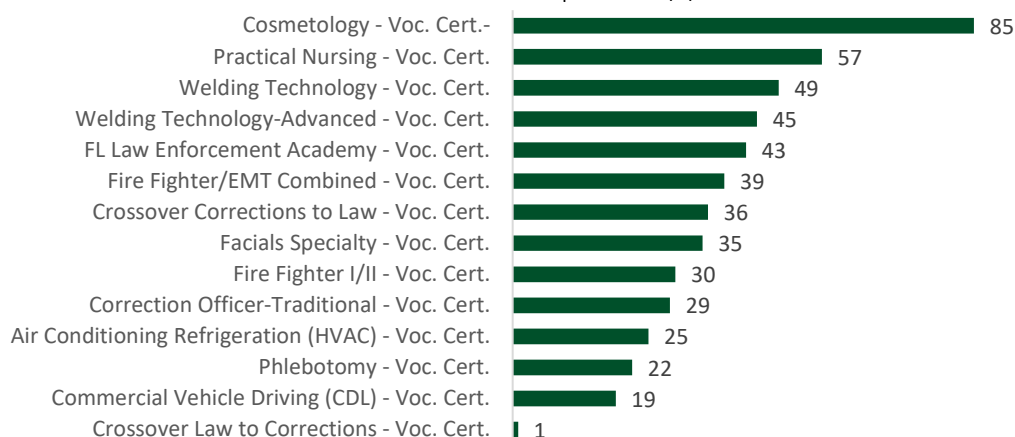




## POSTSECONDARY ADULT VOCATIONAL CERTIFICATES

### Postsecondary Adult Vocational Certificates 2021-2022 Headcount Enrollment

Source: FCS CCTCMIS AA1A Report dated 6/9/22



### Occupational Certificate Declared Majors – 5-Year Trend

Source: FCS CCTCMIS AA1A Reports

Program	2017-18	2018-19	2019-20	2020-21	2021-22
Cosmetology - Voc. Cert.-	66	97	98	86	85
Practical Nursing - Voc. Cert.	44	72	77	67	57
Fire Fighter/EMT Combined - Voc. Cert.	0	35	43	56	49
Welding Technology - Voc. Cert.	35	42	42	41	45
Welding Technology-Advanced - Voc. Cert.	10	37	28	27	45
FL Law Enforcement Academy - Voc. Cert.	57	71	86	69	43
Crossover Corrections to Law - Voc. Cert.	40	54	50	30	36
Facials Specialty - Voc. Cert.	-	-	27	19	35
Fire Fighter I/II - Voc. Cert.	9	26	35	33	30
Correction Officer-Traditional - Voc. Cert.	110	106	59	156	29
Air Conditioning Refrigeration (HVAC) - Voc. Cert.	29	25	29	28	25
Phlebotomy - Voc. Cert.	9	9	8	85	22
Commercial Vehicle Driving – Voc. Cert.	-	-	-	-	19
Crossover Law to Corrections - Voc. Cert.	4	26	2	2	1

### Placement of 2019-20 Postsecondary Adult Vocational Certificate Completers

Source: FCS FETPIP 2021 Follow-up Aggregated Outcome Data. For 2019-20 graduates.

Occupational Certificates (Postsecondary Adult Vocational)	Number of Graduates in Pool	Positive Placements	Placement %
Practical Nursing	26	24	92%
Cosmetology	24	*	*%
Corrections & Law Enforcement (all tracks combined)	93	82	88%
<b>TOTAL PSAV PROGRAMS</b>	<b>170</b>	<b>125</b>	<b>74%</b>

Notes: The "pool" includes completers with useable match data. Vocational program "positive placements" include completers found in jobs *in their field of study*, continuing with their education, or joining the armed forces upon graduation; **TOTALS include ALL Programs**. Discontinued or very low enrollment programs (indicated by an asterisk) are not shown.



### Average Salaries for 2019-20 Graduates

Occupational Certificate (Postsecondary Adult Vocational) Programs	
Practical Nursing	\$48,572
Correctional Officer	\$45,176
Law Enforcement Officer	\$46,648
<i>Earnings for PSAV certificate completers in other programs are not available individually. However, they are included in the average salary total and completion rate for PSAV completers.</i>	
<b>College Average for PSAV Vocational Programs (74% Placement Rate)</b>	<b>\$45,488</b>

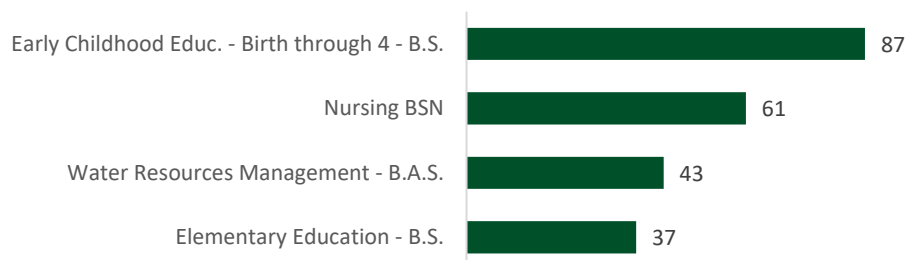
Source: 2019-20120 FETPIP Aggregated Outcome Data Reports from FLDOE; 2021 Follow-up.



## **BACCALAUREATE DEGREE PROGRAMS**

### **Baccalaureate Degrees 2021-22 Headcount Enrollment**

Source: FCS CCTCMIS AA1A Report dated 6/9/2022



Note: Baccalaureate counts do not include “transitional” students who are completing required prerequisites prior to acceptance into the baccalaureate program

### **Baccalaureate Programs Enrollment – 5-Year Trend**

Source: FCS CCTCMIS AA1A Reports

Program	2017-18	2018-19	2019-20	2020-21	2021-22
Early Childhood Educ. - Birth through 4 - B.S.	38	76	76	82	87
Nursing BSN	52	129	99	78	61
Water Resources Management - B.A.S.	19	27	31	44	43
Elementary Education - B.S.	-	-	-	11	37

Note: Baccalaureate enrollment counts do not include “transitional” students who are completing required prerequisites prior to acceptance into the baccalaureate program

### **Baccalaureate Retention- 5 Year Trend**

Source: Florida College System M1P2B Accountability Reports<sup>8</sup>

College	2017 Fall 2013 Cohort	2018 Fall 2014 Cohort	2019 Fall 2015 Cohort	2020 Fall 2016 Cohort	2021 Fall 2017 Cohort
<i>FCS System-Wide Full-Time</i>	79.4	79.6	81.7	79.9	82.5
<i>FCS System-Wide Part-Time</i>	52.2	53.0	54.2	54.5	54.8
<i>FCS System-Wide Total</i>	60.1	61.7	62.8	62.4	63.7
Florida Gateway College Full-Time	100.0	100.0	80.0	100.0	85.7
Florida Gateway College Part-Time	60.0	47.8	58.3	48.5	79.0
Florida Gateway College Total	62.5	52.0	62.1	57.5	80.0

Note: Retention rates are not reported to IPEDS for four-Year colleges in the Florida College System due to the FCS “2+2” State College System.

<sup>8</sup> Retention = Students who have graduated or are still enrolled.



### Baccalaureate Graduates - 5 Year Trend

Source: CCTCMIS AA1A Reports

	2017-18	2018-19	2019-20	2020-21	2021-22
Early Childhood Educ. - Birth through 4 - B.S.	8	9	11	23	17
Nursing BSN	20	37	51	36	26
Water Resources Management - B.A.S.	4	2	4	2	19
Elementary Education - B.S. (new 2020-21)	-	-	-	-	-
<b>B.S./B.A.S. Total</b>	<b>32</b>	<b>48</b>	<b>66</b>	<b>61</b>	<b>62</b>

### Placement of 2019-20 Baccalaureate Degree Completers

Source: FCS FETPIP 2021 Follow-up Aggregated Outcome Data. For 2019-20 graduates.

Baccalaureate Degrees	Number of Graduates in Pool	Positive Placements	Placement %
Nursing, BSN	51	43	84%
Early Childhood Education, B.S.	11	*	*%
Water Resource Management, B.A.S.	*	*	75%
<b>Total Baccalaureate Degree Programs</b>	<b>66</b>	<b>55</b>	<b>83%</b>

Notes: The "pool" includes completers with useable match data. Bachelor's degree outcomes are based on employment status only.

\*Data not available for field counts/percentages under 10 but greater than zero.

## **EDUCATOR PREPARATION INSTITUTE (EPI) CERTIFICATE PROGRAM**

### EPI Declared Majors - 5-Year Trend

Source: FCS CCTCMIS AA1A Reports

2017-18	2018-19	2019-20	2020-21	2021-22
49	35	33	39	50

### EPI Graduates - 5 Year Trend

Source: CCTCMIS AA1A Reports

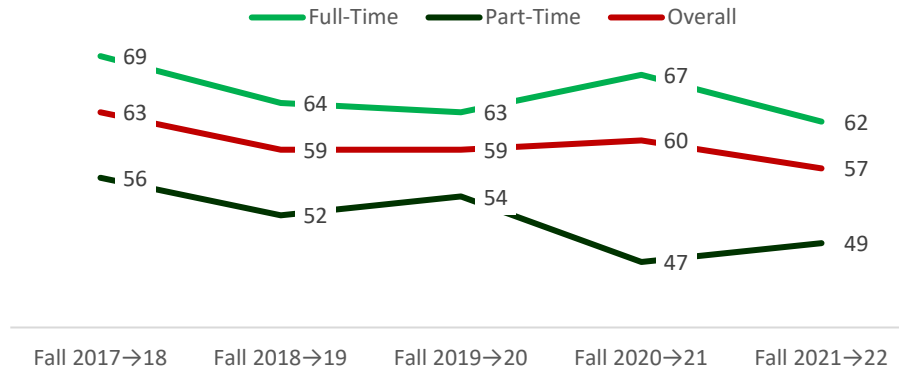
	2017-18	2018-19	2019-20	2020-21	2021-22
EPI	23	25	15	20	14



# IPEDS RETENTION, GRADUATION & TRANSFER-OUT RATES

## Fall-to-Fall Overall Retention Rates

Source: PERA IPEDS-Part E (special "old EF2" report)

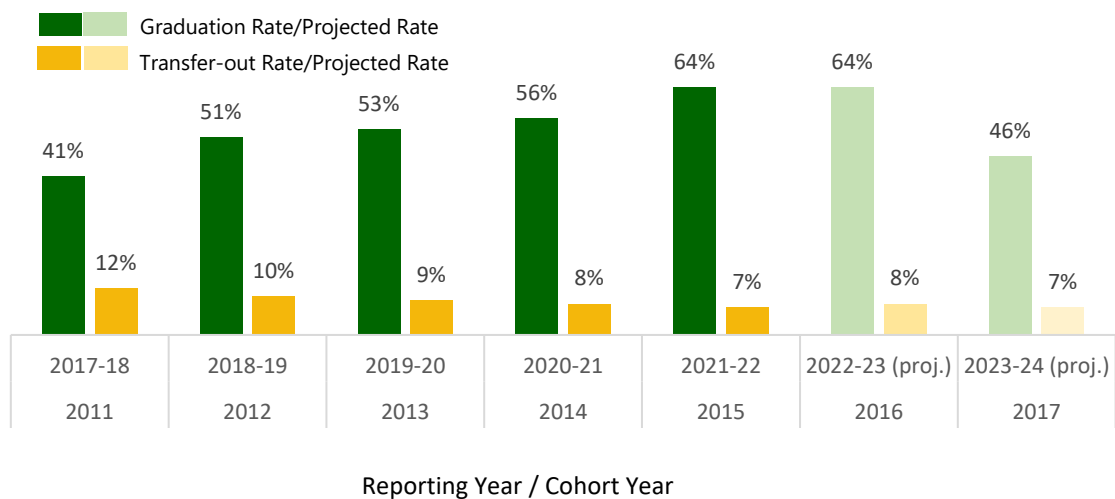


## Graduation and Transfer Rates

Rates as Submitted to IPEDS in Noted Years	2017 (Cohort Year = 2011)	2018 (Cohort Year = 2012)	2019 (Cohort Year = 2013)	2020 (Cohort Year = 2014)	2021 (Cohort Year = 2015)
Number in Cohort	355	284	318	296	255
IPEDS Graduation Rate	41%	51%	53%	56%	64%
IPEDS Transfer-Out Rate	12%	10%	9%	8%	7%

## Graduation and Transfer Rates

Source: Actuals from IPEDS; Projections from *Project GRS Two-Year* from PERA

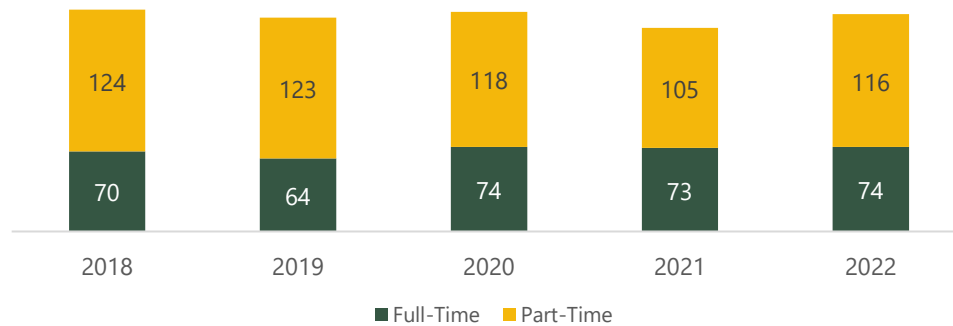


# FACULTY AND STAFF

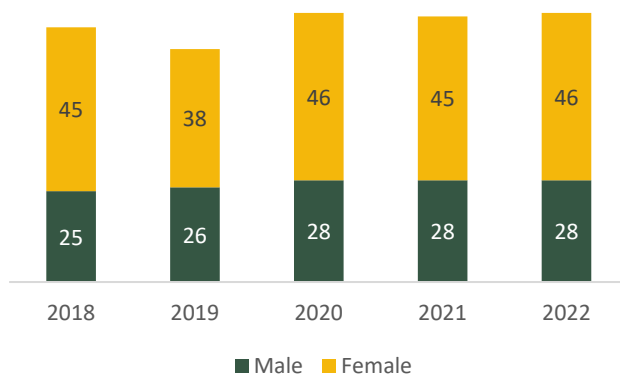
## Faculty (Full-Time/Part-Time)

Source: FCS CCTCMIS – APR RHDEGEN, RSALDEG reports

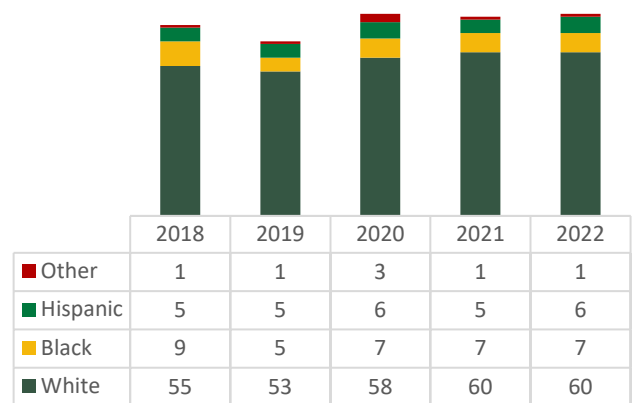
Instructional Staff Composition - 5-Year Trend



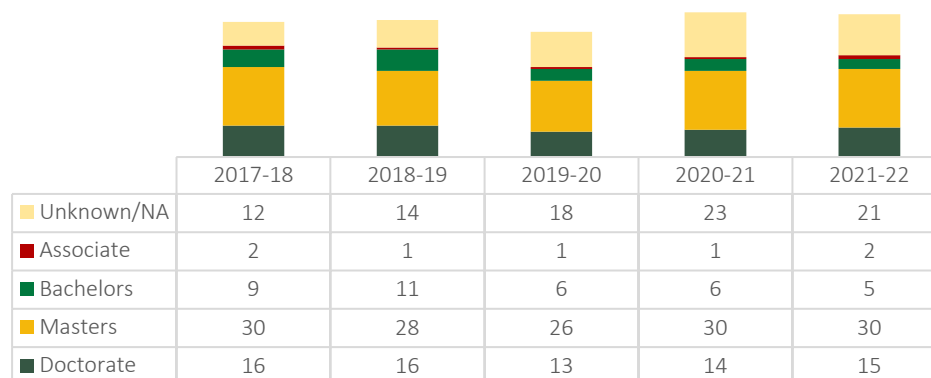
Full-Time Faculty by Gender - 5-Year Trend



Full-Time Faculty by Race/Ethnicity - 5-Year Trend



Full-Time Faculty by Academic Degree - 5-Year Trend





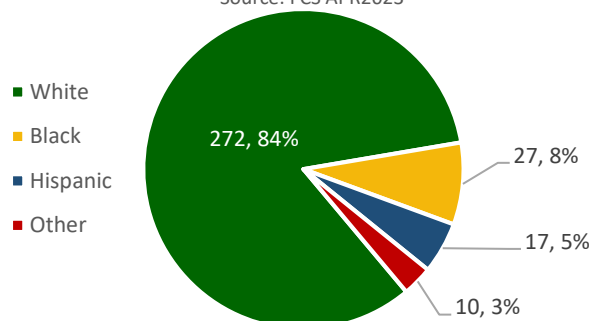
## Fall 2022 Full-Time Employee Headcounts & Percent by Gender by Occupational Activity

Source: Florida College System CCTCMIS—RHDEGEN report 11/17/2022; APR2023

Occupational Activity	No.	% Male	% Female
Management Occupations	4	50%	50%
Business & Financial Operations	20	35%	65%
Computer Engineering and Science	4	100%	0%
Community Service, Legal, Arts, and Media	10	40%	60%
Instruction	74	38%	62%
Library Technicians	2	0%	100%
Student, Academic Affairs & Other Education Services	2	50%	50%
Office, Administrative Support & Sales Occupations	53	21%	79%
Natural Resources, Construction & Maintenance Occup.	5	100%	0%
Instructional Support/Other Teaching & Instr. Support	3	33%	67%
Professional Support	5	40%	60%
<b>Total Full-Time Employees</b>	<b>182</b>	<b>36%</b>	<b>64%</b>

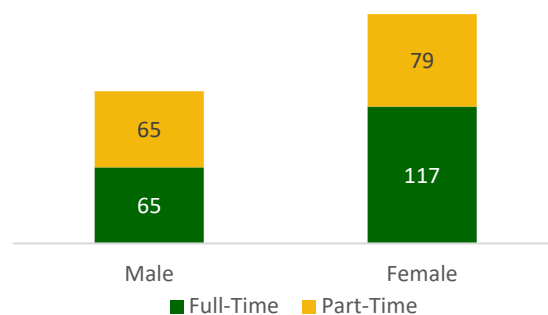
Total FGC Employee Headcounts by Race/Ethnicity  
Fall 2022

Source: FCS APR2023



Total FGC Employee Headcounts by  
Gender and Status Fall 2022

Source: FCS APR2023



## CAMPUS FACILITIES

**Florida Gateway College Site Inventory - 2020**

Name	Area (Acres)	Ownership	No. of Facilities	Acquisition Date	Site County
Main Campus	134.00	Fee Simple	79	1962	Columbia
Olustee Site	6.51	Fee Simple	9	1987	Baker
Gilchrist Center	1.00	Leased	1	2006	Gilchrist
Dixie County Center	0.25	Leased	1	1999	Dixie

**Main Campus Map  
149 SE College Place  
Lake City, FL 32025**



In addition to the main campus, FGC also serves students at a number of off-campus sites These include:

**Avery & Twyla Roberts School of  
Public Service**  
25030 US Highway 90 E  
Sanderson, FL 32087

**Public Safety Center West**  
279 NE Jones Way  
Lake City, FL 32025

**FGC Dixie Center**  
64 NE 121st Street  
Cross City, FL 32628

**FGC Gilchrist Center**  
2821 E. Bell Avenue  
Bell, FL 32619



**Columbia Correctional Institution Annex**  
216 S.E. Corrections Way  
Lake City, FL 32025

The Public Service Training Center at Olustee serves as FGC's main Public Service Training site, and is home to the College's Emergency Medical Services, Commercial Driving, Fire Fighter, Law Enforcement and Corrections programs.

The Public Safety Center West the site served as additional space for the College's Basic Corrections training program, and as needed for college and community events in 2022. It is in the process of being renovated to support the new women's flag football program and a college childcare center for students and employees.

The FGC Dixie and Gilchrist Centers offer:

- Information on FGC Programs and Enrollment processes
- Test proctoring
- Adult Education Program (Dixie Center)
- Computer lab and Printing for currently enrolled FGC students
- Study areas
- Limited facility use for non-FGC students

The Columbia Correctional Institution Annex is used as an instructional site for incarcerated students participating in the Second Chance Pell program.

In addition to the above, two district high schools have been approved as sites by SACSCOC to offer more than 50% of an accredited program at that location:

**Baker County High School**  
1 Wildcat Drive  
Glen Saint Mary, FL 32040

**Dixie County High School**  
16077 SE Highway 19  
Cross City, FL 32628





### **Campus Facilities Available for Lease**

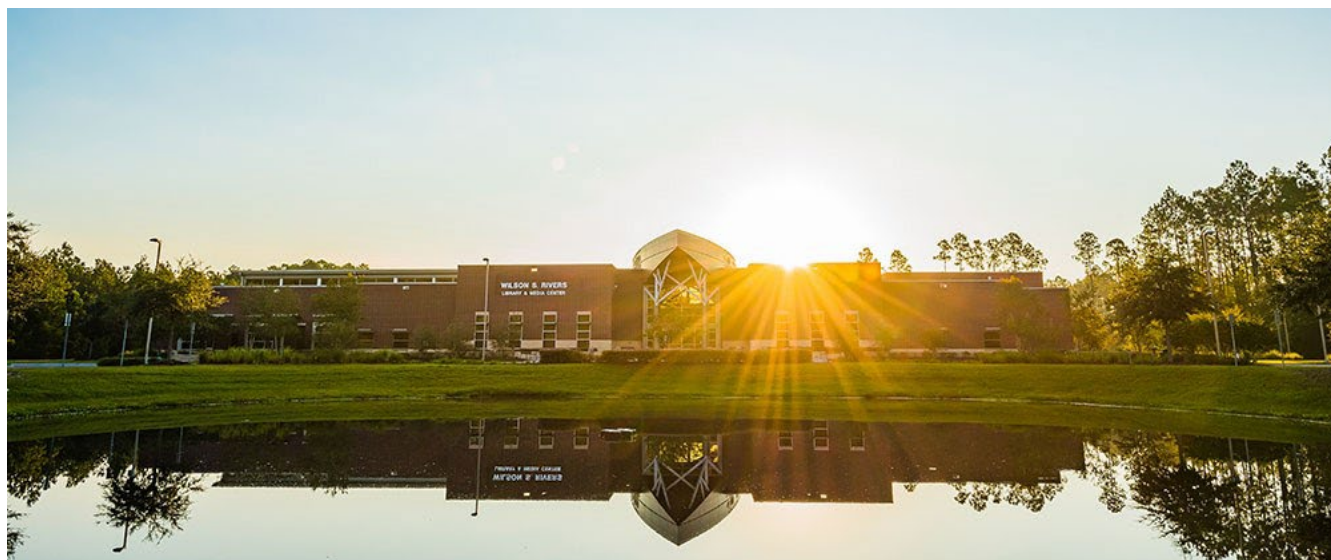
The College provides several areas for use by the general public and College-sponsored organizations to hold events, including meetings, seminars, luncheons, performances, and banquets. Facilities scheduling is coordinated through the Department of Procurement and Contracts.

#### **Available Facilities and Capacities**

1. **Howard Conference Center** (1,076 with bleachers extended — 1,876 with both bleachers out and chairs on the floor — 300 to 500 with tables in banquet set-up)
2. **Lake City Medical Center Auditorium** (Maximum 150 without tables/chairs)
3. **Levy Performing Arts Center** (523 seats, including handicap seating)
4. **Olustee Fire Tower (Restricted Use)**
5. **Pine Square** (200 with tables)
6. **Wilson S. River Media Center, Atrium** (Maximum 197, May be used for receptions)
7. **Wilson S. River Media Center, Room 102** (Maximum occupancy is 160 people — Classroom-style seating will accommodate max of 60)
8. **Wilson S. River Media Center, Room 153** (Maximum capacity 36, classroom-style seating only)

## WILSON S. RIVERS LIBRARY AND MEDIA CENTER

---



The 37,000 square foot Wilson S. Rivers Library and Media Center building includes a classroom, a 35-seat computer lab classroom, two meeting rooms, and a state-of-the-art TV studio. The library has 40 computers available for student use. There are also five study rooms, each with a computer and whiteboard, and a microfilm viewing room.

### 2021-22 FGC Library Statistics

Source: Florida Gateway College Library

Library Staff (FTE)	7.0
Physical Library Collection - books, media, serials	31,974
Digital Collection – ebooks, multimedia, eserials	242,632
New Titles Added	678
General Circulation Transactions- print & digital	106,901
Library Orientation Video views- replaced most in-person presentations	648
Physical Information Literacy Class Presentations	15
Students attending Information Literacy Class Presentations	159
Number of students who completed the Library Skills Assessment	602
Number of hours open per week Fall 2021 & Spring 2022	59
Patron entries/gate count	28,690



## ATHLETICS

The mission of the Florida Gateway College Athletic Department is to provide student-athletes with the highest quality educational opportunities, resources, services and facilities needed to achieve academic and athletic excellence while adhering to both National Junior College Athletic Association (NJCAA) and Florida College System Activities Association (FCSAA) guidelines.

### Sports Teams and Participation (2021-22)

Sport	Men	Women
Volleyball	-	12
Cross Country	-	6
Basketball	12	-
<b>Total Participants</b>	<b>12</b>	<b>18</b>
<b>Ratio (Percent)</b>	<b>40%</b>	<b>60%</b>

Source: 2021-22 EADA Report Note: No students participated in more than one sport.



### Athletically Related Student Aid - All Teams

	Men	Women	Total
Amount of Aid	24,000	38,000	62,000
<b>Ratio (Percent)</b>	<b>39%</b>	<b>61%</b>	<b>100%</b>

Source: 2021-22 EADA Report

# FINANCIAL AID

## Annual Financial Aid Awarded Aid Counts 2021-2022

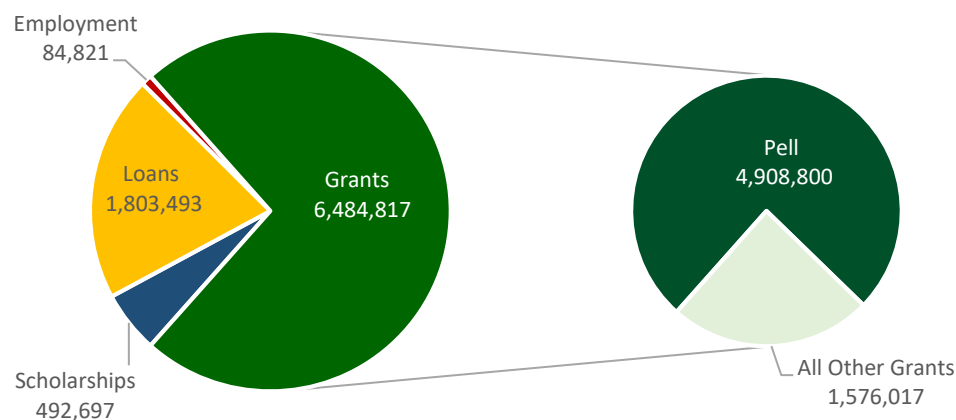
Source: CCTCMIS State Reports FAIDCNTS 10/20/22

AWARD TYPE	AWARD COUNT	HEADCOUNT	AMOUNT PAID
101 - GRANTS-FEDERAL-PELL	2,490	1,409	4,908,800.05
102 - GRANTS-FEDERAL-SEOG	325	197	123,820.30
104 - GRANTS-FEDERAL-OTHER	40	28	27,299.96
105 - GRANTS-STATE-FPSAG	996	638	1,208,421.00
106 - GRANTS-OTHER-STATE SOURCES	73	46	29,904.00
107 - GRANTS-STATE-FPPCESAGP	125	93	173,369.00
113 - GRANTS-FEDERAL-TEACH	8	4	13,203.00
<b>TOTAL GRANTS</b>	<b>4,057</b>	<b>2,415</b>	<b>6,484,817.31</b>
206 - FEDERAL-LOANS-FDLP	649	387	1,794,873.00
207 - FEDERAL-LOANS-FDLP PLUS	2	1	8,620.00
<b>TOTAL LOANS</b>	<b>651</b>	<b>388</b>	<b>1,803,493.00</b>
302 - SCHOLARSHIPS-STATE-BRIGHT FUTURES-FAS	22	11	25,580.00
303 - SCHOLARSHIPS-STATE-BRIGHT FUTURES-FMS	84	48	86,639.46
304 - SCHOLARSHIPS-STATE-BRIGHT FUTURES-FGVS	21	14	10,590.00
305 - SCHOLARSHIPS-OTHER STATE	14	9	12,341.28
306 - SCHOLARSHIPS-INSTITUTIONAL	402	294	357,546.48
<b>TOTAL SCHOLARSHIPS</b>	<b>543</b>	<b>376</b>	<b>492,697.22</b>
401 - FEDERAL STUD EMPLOYMENT WORK STUDY	53	34	84,820.62
<b>TOTAL STUDENT EMPLOYMENT</b>	<b>53</b>	<b>34</b>	<b>84,820.62</b>
<b>COLLEGE TOTAL FINANCIAL AID</b>	<b>5,304</b>	<b>3,213</b>	<b>8,865,828.15</b>

**E: THE HEADCOUNTS ARE UNDUPLICATED WITHIN AWARDS**

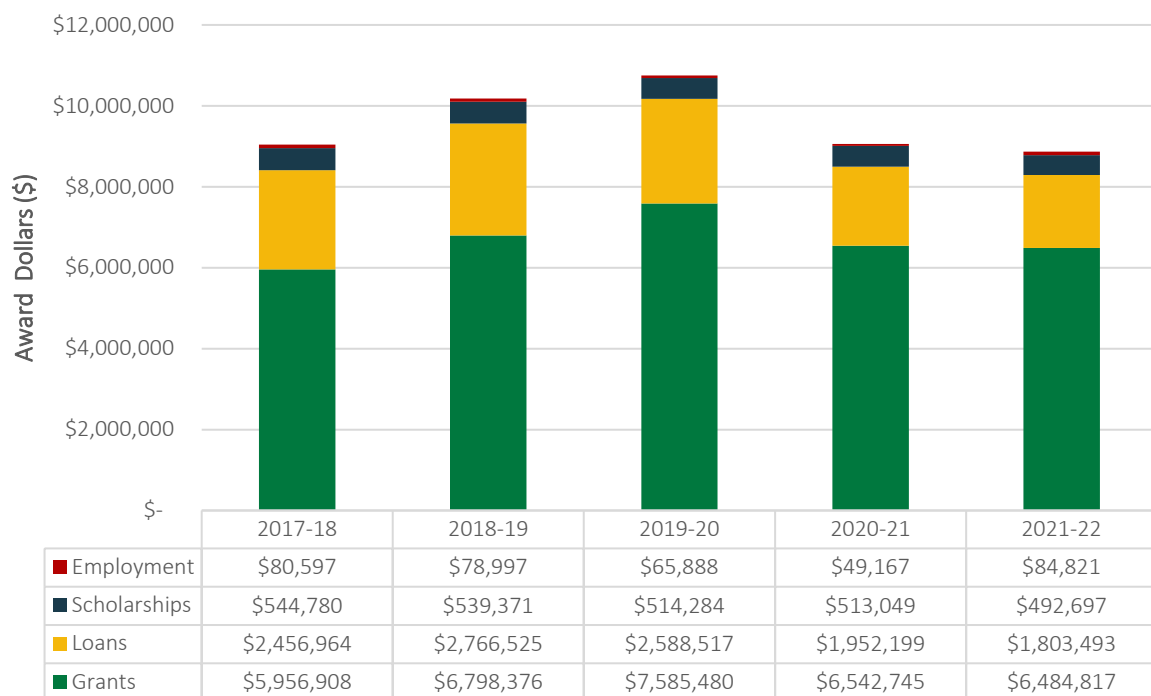
CMIS: SDPAFCNT 10/20/22 18:15:44 RCE: SDB2022

## Annual Financial Aid Awards by Award Type - 2021-2022





### Annual Financial Aid Awarded - 5 Year Trend 2017-18 through 2021-22



## STUDENT FEES

2021-2022

Florida Resident

Non-Florida Resident

Credit Courses, Lower Division: Total per Credit Hour			
		<i>(online <b>only</b> - \$230.53 per credit hour)</i>	
Tuition	\$ 78.94	Resident Fee	\$ 78.94
Capital Improvement	\$ 7.89	Non-Resident Tuition	\$236.82
Financial Aid	\$ 5.53	Capital Improvement	\$ 31.58
Student Activities	\$ 6.25	Financial Aid	\$ 22.10
Technology	\$ 3.71	Student Activities	\$ 6.25
Access Fee	\$ 1.00	Technology	\$ 14.88
		Access Fee	\$ 1.00
<b>Total per Credit Hour</b>	<b>\$103.32</b>	<b>Total per Credit Hour</b>	<b>\$391.57</b>
Non-Credit Postsecondary Adult Vocational Courses (per semester hour equivalent)			
		<i>(online <b>only</b> - \$157.88 per credit hour)</i>	
Tuition	\$ 69.90	Resident Fee	\$ 69.90
Technology Fee	\$ 3.50	Non-Resident Tuition	\$209.70
Financial Aid	\$ 6.99	Technology Fee	\$ 13.98
Capital Improvement Fee	\$ 3.50	Financial Aid	\$ 27.96
Access Fee	\$ 1.00	Capital Improvement Fee	\$ 13.98
		Access Fee	\$ 1.00
<b>Net Tuition per SHE</b>	<b>\$ 84.89</b>	<b>Net Tuition per SHE</b>	<b>\$336.52</b>
Credit Courses, Upper Division, Baccalaureate: Total per Credit Hour			
		<i>(online <b>only</b> - \$264.44 per credit hour)</i>	
Tuition	\$ 91.79	Tuition	\$ 91.79
Capital Improvement	\$ 9.18	Out of State Fees	\$275.37
Financial Aid	\$ 4.59	Capital Improvement	\$ 36.72
Student Activities	\$ 9.18	Financial Aid	\$ 18.36
Technology	\$ 4.59	Student Activities	\$ 9.18
Access Fee	\$ 1.00	Technology	\$ 18.36
		Access Fee	\$ 1.00
<b>Total per Credit Hour</b>	<b>\$120.33</b>	<b>Total per Credit Hour</b>	<b>\$450.78</b>
All fees are listed per credit hour. Amount does not include lab fees or distance learning fees.			
<ul style="list-style-type: none"> <li>• Lab fees are per course, not credit hour.</li> <li>• Distance learning fees are \$10.00 per credit hour.</li> </ul>			
Fees are subject to change.			

For latest tuition and fee schedules, visit <https://www.fgc.edu/students/fee-payment/>



## FOUNDATION FOR FLORIDA GATEWAY COLLEGE, INC.

---

The Foundation for Florida Gateway College is a private, not-for-profit organization that exists solely to provide financial support for Florida Gateway College and the students it serves. Funds are raised to provide student scholarships, purchase equipment and teaching resources, and to grant other needed support.

The Foundation for Florida Gateway College was founded in 1969 by a dedicated group of community volunteers who sought to raise private funds to support the College. Since inception, more than \$20,000,000 has been expended to support FGC and students.

The Foundation is governed by a volunteer Executive Board of Directors who use their time and talents to assist the college in fulfilling its mission. In addition to the Executive Board, community volunteers also serve on the following committees: Finance/Audit, Planned Gifts and Gift Acceptance/Property.

Gifts to the Foundation are tax deductible to the fullest extent allowed by law.

A variety of privately funded scholarships are available and are administered by the Florida Gateway College Office of Financial Aid. For more information contact the financial aid office at 386-754-4282.

For more information on investing in Florida Gateway College, please contact:

Lee Pinchouck  
Executive Director  
The Foundation for Florida Gateway College  
386-754-4201  
[lee.pinchouck@fgc.edu](mailto:lee.pinchouck@fgc.edu)



More information about the Foundation can be found on the web at: <https://www.fgc.edu/alumni/the-foundation/>

# AUDITED FINANCIALS

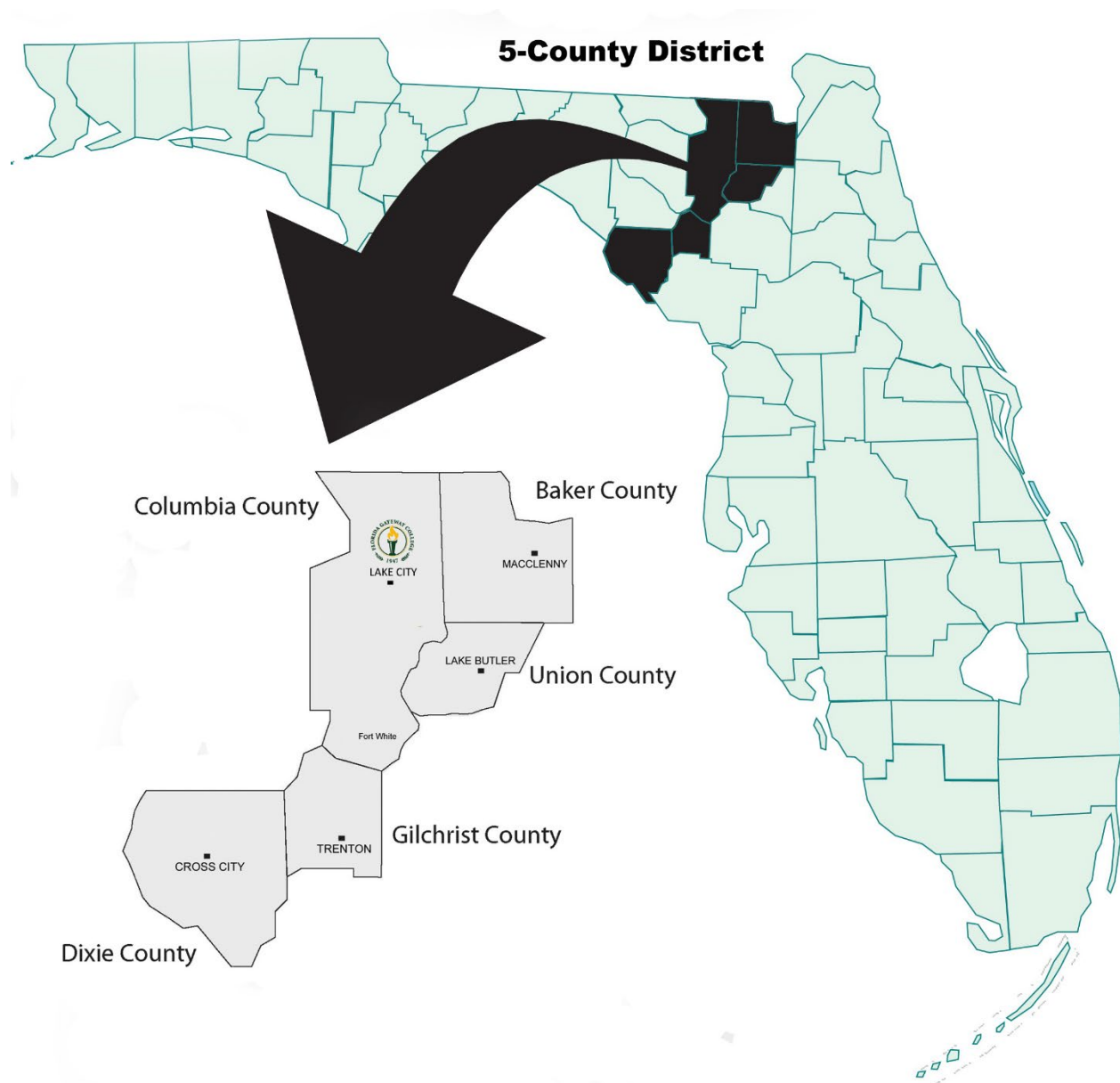
**FLORIDA GATEWAY COLLEGE**  
**A Component Unit of the State of Florida**  
**Statement of Revenues, Expenses, and Changes in Net Position For the Fiscal**  
**Year Ended June 30, 2021**

	College	Component Unit
<b>REVENUES</b>		
Operating Revenues:		
Student Tuition and Fees, Net of Scholarship Allowances of \$3,545,624.66	\$ 2,360,823.49	\$ -
Federal Grants and Contracts	965,175.58	-
State and Local Grants and Contracts	35,120.00	-
Nongovernmental Grants and Contracts	567,383.65	-
Sales and Services of Educational Departments	874.00	-
Auxiliary Enterprises	62,142.97	-
Other Operating Revenues	145,704.86	866,607.00
<b>Total Operating Revenues</b>	4,137,224.55	\$ 866,607.00
<b>EXPENSES</b>		
Operating Expenses:		
Personnel Services	18,518,940.87	-
Scholarships and Waivers	5,631,856.79	624,150.00
Utilities and Communications	703,889.57	-
Contractual Services	1,844,971.92	275,920.00
Other Services and Expenses	2,127,558.29	272,177.00
Materials and Supplies	1,683,350.04	-
Depreciation	2,130,185.10	8,672.00
<b>Total Operating Expenses</b>	32,640,752.58	1,180,919.00
<b>Operating Loss</b>	(28,503,528.03)	(314,312.00)
<b>NONOPERATING REVENUES (EXPENSES)</b>		
State Noncapital Appropriations	14,996,433.00	-
Federal and State Student Financial Aid	8,226,726.83	-
Gifts and Grants Received for Other Than Capital or Endowment Purposes	2,740,429.29	-
Investment Income	44,332.56	180,678.00
Other Nonoperating Revenues	140,515.18	4,875,317.00
Loss on Disposal of Capital Assets	-	(1,021.00)
Interest on Capital Asset-Related Debt	(250,399.06)	-
Other Nonoperating Expenses	-	(54,468.00)
<b>Net Nonoperating Revenues</b>	25,898,037.80	5,000,506.00
<b>Income (Loss) Before Other Revenues</b>	(2,605,490.23)	4,686,194.00
State Capital Appropriations	6,237,025.00	-
Capital Grants, Contracts, Gifts, and Fees	2,205,419.61	227,484.00
<b>Total Other Revenues</b>	8,442,444.61	227,484.00
<b>Increase in Net Position</b>	5,836,954.38	4,913,678.00
Net Position, Beginning of Year	28,833,144.80	18,163,766.00
<b>Net Position, End of Year</b>	\$ 34,670,099.18	\$ 23,077,444.00

Source 2022 Florida Auditor General Report [https://flauditor.gov/pages/pdf\\_files/2022-151.pdf](https://flauditor.gov/pages/pdf_files/2022-151.pdf)

## FLORIDA GATEWAY COLLEGE SERVICE AREA

---



The Florida Gateway College service area consists of five counties (Baker, Columbia, Dixie, Gilchrist and Union) which stretch over a distance of more than 100 miles – from the southern Georgia border to the Gulf of Mexico—covering nearly 2,700 square miles.



### Population Estimates and Land Area of FGC Service Area - 2021

County	Population	Square Miles
Baker	27,881	585
Columbia	71,525	798
Dixie	16,988	705
Gilchrist	18,841	350
Union	15,550	244
<b>Total 5-County District</b>	<b>150,785</b>	<b>2,682</b>

Source: University of Florida College of Liberal Arts and Sciences Bureau of Economic and Business Research (BEBR)  
Report *Florida Estimates of Population*, 2022

### Selected Population Age and Gender Demographics - 2021

County	<18	65+	Median Age	Gender	
				Male	Female
Baker	23.7%	14.5%	37.0	53.5%	46.5%
Columbia	21.9%	18.8%	40.3	52.1%	47.9%
Dixie	18.5%	23.0%	45.5	56.2%	43.8%
Gilchrist	20.4%	20.0%	42.2	52.1%	47.9%
Union	19.8%	15.5%	39.2	65.5%	34.5%
<b>Total 5-County District</b>	<b>21.5%</b>	<b>18.2%</b>	-	<b>54.3%</b>	<b>45.7%</b>
<i>Florida</i>	<i>20.0%</i>	<i>20.4%</i>	<i>42.3</i>	<i>49.2%</i>	<i>50.8%</i>

Source: U.S. Census Bureau <https://data.census.gov/> Table DP05 (2/2/2023); 5-county district percentages are calculated

### Population by Race/Ethnicity - 2021

County	White	Black	Asian	Other Race	Multi-Racial	Hispanic (any Race)
Baker	79.1%	12.6%	0.3%	0.8%	7.2%	2.9%
Columbia	73.7%	17.7%	1.0%	2.4%	5.1%	6.6%
Dixie	85.6%	7.6%	0.3%	0.9%	5.6%	4.3%
Gilchrist	89.1%	4.9%	0.3%	1.2%	4.4%	6.3%
Union	71.9%	18.3%	0.2%	1.6%	8.0%	5.9%
<b>Total 5-County District</b>	<b>77.7%</b>	<b>14.1%</b>	<b>0.6%</b>	<b>1.5%</b>	<b>5.8%</b>	<b>5.8%</b>
<i>Florida</i>	<i>67.7%</i>	<i>15.7%</i>	<i>2.8%</i>	<i>4.5%</i>	<i>9.4%</i>	<i>26.2%</i>

Source: U.S. Census Bureau <https://data.census.gov/> Table DP05 (2/2/2023); 5-county district percentages are calculated and may not add up to 100% due to rounding.

### Education Attainment Levels of Population 25 Years and Older - 2021

	Baker	Columbia	Dixie	Gilchrist	Union	Florida
Less than HS Diploma	14.1%	13.6%	19.1%	13.7%	22.7%	11.0%
HS Diploma/Equiv.	43.8%	36.5%	47.8%	42.1%	36.9%	27.9%
Some College/No Degree	19.3%	25.2%	15.8%	20.5%	19.6%	19.5%
Associate's Degree	7.6%	9.3%	6.4%	11.1%	9.9%	10.1%
Bachelor's Degree	9.2%	10.6%	5.9%	9.4%	7.6%	19.8%
Graduate/Prof. Degree	6.0%	4.8%	4.9%	3.1%	3.4%	11.7%

Source: U.S. Census Bureau <http://data.census.gov/> S1501 – Educational Attainment, American Community Survey 5-Year Estimates (2/2/2023)

**Note:** How to use <http://data.census.gov/> can be found at this link, <https://www.census.gov/data/what-is-data-census-gov/guidance-for-data-users/how-to-materials-for-using-data-census-gov.html>



## GLOSSARY OF TERMS

---

Definitions are taken from the Glossary of the Florida College System Fact Book or current Florida Statutes.

### **Academic Year (AY)**

Statistics in this Fact Book follow the Florida Department of Education definition of the academic year—beginning with the Summer term and ending with the Spring term. (e.g. AY 2019-20 would be Summer 2019, Fall 2019, and Spring 2020.)

### **Accountability**

A process whereby data-based measures are used to provide information on institutional performance.

### **Advanced and Professional (A&P)**

A program area with courses designed to provide the first two years of course work leading to an advanced or professional degree, including general education and specialized lower division courses to complete a transfer degree. It does not include college preparatory or non-college credit courses.

### **Associate in Arts Degree (AA)**

Two-year degree program designed to transfer to a four-year institution. Florida has a statewide articulation agreement between the Florida College System and the State University System.

### **Associate in Science Degree (AS)**

Programs of instruction consisting of college-level courses to prepare students for entry into employment. Two-year technical degree that contains 15-18 credit hours of transferable general education.

### **Associate in Applied Science Degree (AAS)**

Programs of instruction consisting of college-level courses designed to prepare students for employment in a technical occupation. Generally, this is a two-year technical degree for students who do not want to pursue education beyond an associate's level.

### **Applied Technology Diploma (ATD)**

Courses that are part of an A.S. or A.A.S. degree and lead to employment in a specific occupation. An A.T.D. may consist of either vocational or college credit.

### **Bachelor of Science Degree (BS)**

A four-year degree typically involving a technical or workforce related field of study.

### **Bachelor of Applied Science Degree (BAS)**

A four-year degree designed to accommodate the unique demands for entry and advancement within specific workforce sectors.

### **Bachelor of Science Degree in Nursing (BSN)**

A four-year degree in Nursing.

### **Career Certificate**

A Career Certificate program consists of a series of vocational courses that prepare students for entry level employment in specific career fields. Programs can vary greatly in length.

### **College Credit**

The type of credit assigned to courses or course-equivalent learning that is part of an organized and specified college degree or college credit certificate program.



**College Credit Certificate**

Short-term career education program which is part of an AS degree.

**College Preparatory Instruction (CP or College Prep)**

See *Developmental Education*.

**Community College and Technical Center Management Information Systems (CCTCMIS)**

Bureau within the FLDOE which maintains data collection systems for the Florida College System, serving 28 college campuses.

**Completer**

A student who finishes a planned sequence of courses or competencies designed to meet an academic or vocational occupational objective and has met all of the requirements of the institution for program completion.

**Continuing Workforce Education (CWE)**

The classification of instruction designed to improve job skills of employed persons. It may be tailored to a given employer and job (customized) or it may have broader applicability. CWE programs are not funded in 2014-15.

**Course Success Rate**

Percentage of students achieving a “C” or better in a course.

**Developmental Education (DevEd)**

Instruction through which a high school graduate who applies for any college credit program may attain the communication and computation skills necessary to successfully complete college credit instruction.

**Dual Enrollment (DE)**

Enrollment of an eligible secondary student or home education student in a postsecondary course creditable toward high school completion and a career certificate or an associate or baccalaureate degree. *Note: By IPEDS definition, dual enrollment students are not considered degree-seeking.*

**Educator Preparation Institute (EPI)**

Instructional institute located at self-selected postsecondary institutions, including community colleges, upon approval by the Department of Education in order to provide any or all of the following instruction: professional development for teachers for classroom improvement and for recertification purposes, training for substitute teachers, paraprofessional instruction, and competency-based instruction for baccalaureate degree holders leading to professional teacher certification. Educator Preparation Institutes provide an alternate route to teacher certification for mid-career professionals and college graduates who were not education majors.

**First Time in College (FTIC)**

A student attending a college for the first time who has no credit toward a degree or formal award from any other institution who is enrolled in a course in an instructional area leading to a degree or certificate.

**Florida Education and Training Placement Information Program (FETPIP)**

Provides placement information about graduates.

**Full-Time Student (FT)**

Any student enrolled for 12 semester credits during the fall or spring terms, or 24 or more contact hours/week for clock hour programs.

**Full-Time Equivalent (FTE) Enrollment**

Student semester hours divided by 30 for advanced and professional, postsecondary vocational instruction, and developmental education. For all other instruction, instructional clock hours divided by 900 hours.



**Graduation Rate**

Graduation rates measure the percentage of first-time, full-time undergraduate students who complete their program at the same institution within a specified period of time. FGC typically uses 150% of normal time to completion when calculating graduation rates.

**Integrated Postsecondary Education Data System (IPEDS)**

A Federal Education data system.

**Lower Division**

College attendees at the freshman and sophomore level.

**Non-degree Seeking Student**

A student enrolled in courses for credit who has not declared that he/she is seeking a degree or formal award.

**Nonresident**

A student who is not a Florida resident and must pay the full tuition fees.

**Occupational Credit**

The type of credit assigned to courses or course equivalent learning that is part of an organized and specified career certificate program.

**Part-Time Student (PT)**

A student who is enrolled in less than 12 semester credits during the fall or spring terms, or less than 24 contact hours/week for clock hour programs.

**PK-20 Education Reporting and Accessibility (PERA)**

Bureau within the Accountability, Reporting, and Measurement (ARM) Division of the Florida Department of Education.

**Postsecondary Adult Vocational (PSAV)**

Job preparatory programs, excluding CWE, through which a student receives a vocational certificate (PSAVC) upon completion of instruction.

**Postsecondary Vocational Certificate(PSV or PSVC)**

College credit job preparatory programs, through which a student receives an AS or AAS degree, college credit certificate (PSVC), or Applied Technology Diploma (ATD) upon completion of instruction.

**Resident for Tuition Purposes**

A student who is a Florida resident and has maintained that residency for at least one year, and therefore not responsible for the payment of nonresident tuition fees.

**Retention Rate**

The retention rate is the percentage of full-time first-time degree/certificate-seeking students from the previous fall who either re-enrolled or successfully completed their program by the current fall. *Note: IPEDS does not report our retention rate due to the “2+2” nature of Florida Colleges. FGC derives an IPEDS retention rate noted in this Fact Book from a special report produced by the FLDOE (PERA) group. Program retention rates are from FLDOE accountability reports.*

**Unduplicated Headcount**

A count of the number of students enrolled in a specific period (i.e., semester, academic year) with each individual student counted once. Enrollment figures for a single term are unduplicated unless otherwise noted (as in the case of program enrollments—students may be enrolled in multiple programs in a single term).

**Upper-Division**

College attendees at the junior and senior level.

**Vocational Credit** See *Occupational Credit*.